


PRICED AT  
**\$547,150**

 2096 Sq Ft

 3 Beds

 3.5 Baths

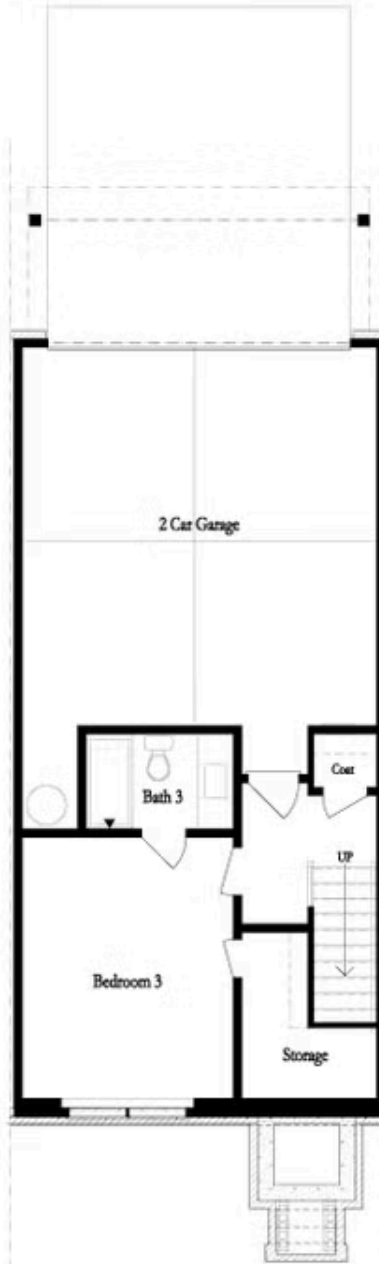
 2 Car Garage

 3.0 Story

~~~SPRING INTO A NEW HOME~~~ A Fresh Take on Modern Living is the Freemont Plan. Enjoy \$5,000 towards closing costs with one of our preferred lenders! Step into comfort and style with the Freemont, our newest floor plan designed for effortless living and timeless elegance. This townhome showcases the Cool Linen Collection Package, featuring stunning modern finishes throughout. Open-concept layout blending kitchen, dining, and family room ideal for entertaining or cozy nights in. Gourmet kitchen with quartz countertops, sleek tile backsplash, stainless steel appliances, single-bowl stainless steel sink, and cool-toned cabinetry. The family room features a striking stacked quartzite fireplace adding warmth and charm. Step out onto the spacious deck a great spot for your morning coffee or enjoying sunny afternoons. On the upper level is the spacious Owner's Suite with tray ceilings, large walk-in closet, featuring dual vanities and walk-through shower with drying area along with a well-appointed secondary bedroom with its own full bathroom. The laundry room is conveniently located upstairs for easy access and everyday efficiency. Terrace level has a private guest suite with full bath ideal for visitors. 2-car rear-entry garage adds practicality and convenience. Located minutes from downtown Duluth in one of the area's most ...

**Want to Know More  
About This Home?**

CONTACT OUR COMMUNITY SALES MANAGER  
Call Us @ 470.248.2103



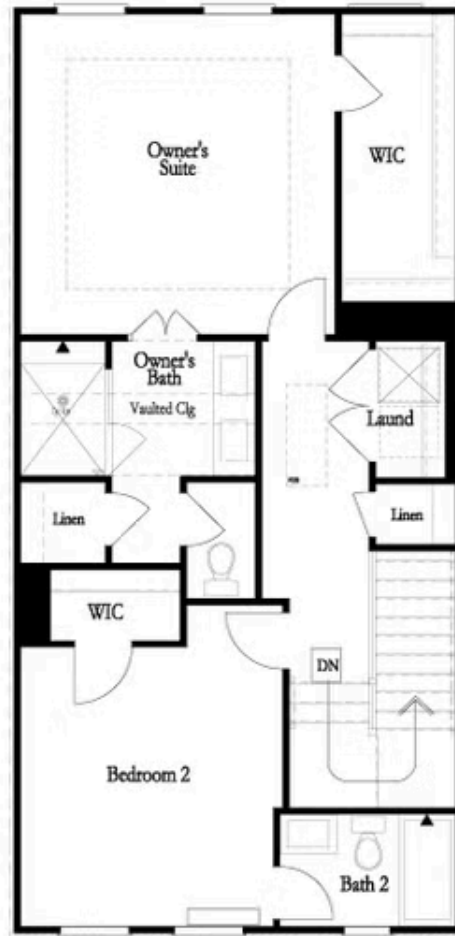
Want to Know More  
About This Home?

CONTACT OUR COMMUNITY SALES MANAGER  
Call Us @ 470.248.2103



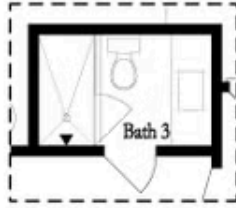
Want to Know More  
About This Home?

CONTACT OUR COMMUNITY SALES MANAGER  
Call Us @ 470.248.2103



Want to Know More  
About This Home?

CONTACT OUR COMMUNITY SALES MANAGER  
Call Us @ 470.248.2103



OPT Terrace Shower Only  
 No Tub/Shower Combo



OPT Tub & Shower  
 in Owner's Bath



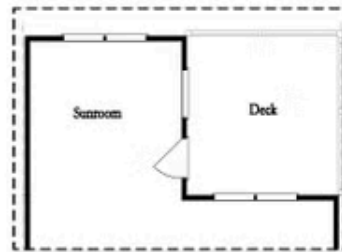
OPT Walk Through Shower  
 in Owner's Bath



OPT Fireplace



OPT Linear Fireplace



OPT Sunroom

Want to Know More  
 About This Home?

CONTACT OUR COMMUNITY SALES MANAGER  
 Call Us @ 470.248.2103