



PRICED AT  
**\$640,875**

 2676 Sq Ft

 4 Beds

 3.5 Baths

 2 Car Garage

 3.0 Story

Sizzling Summer Savings here at Evanshire - \$5000 in closing costs when you use one of our preferred lenders! Experience the joy of building your dream home with our Greenville Plan in the charming city of Duluth. ONLY 3 REMAIN! Choose your own design selections at Homesite 7 - corner lot with elegant 4-bedroom home and a welcoming front porch that offers a perfect blend of traditional charm and modern amenities. Spacious Open Floor Plan ideal for modern living and entertaining with an extended rear deck for outdoor relaxation and a cool breeze when enjoying the fall season. Select all your favorite design options and allow your personal style to shine in your oversized kitchen with lots of GE Stainless Steel appliance package options for your specific cooking needs. Tailor the layout to fit your lifestyle making it just how you envisioned. Side fenced in landscaped yard allowing your pup or little one to run loose. HOA maintained grounds so you can complete other tasks while your lawn is tended too. Just moments from Downtown Duluth where shopping and restaurants are at your fingertips and memories await. Enjoy this gated community surrounded by trees offering a pool and club house, ...

**Want to Know More  
About This Home?**

CONTACT OUR COMMUNITY SALES MANAGER  
Call Us @ 470.248.2103



Elevation A

Want to Know More  
About This Home?

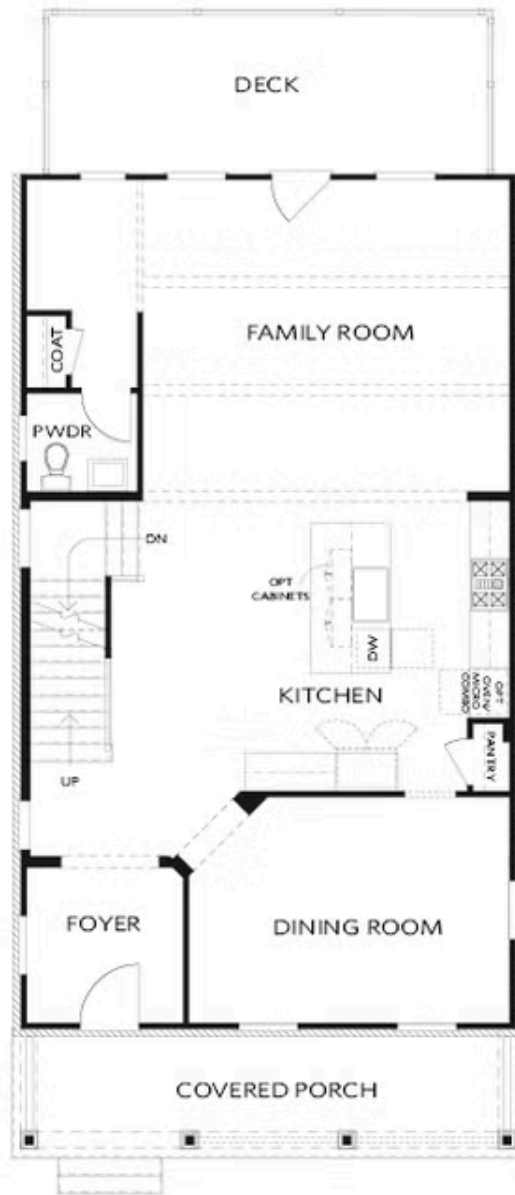
CONTACT OUR COMMUNITY SALES MANAGER  
Call Us @ 470.248.2103



Elevation A

Want to Know More  
About This Home?

CONTACT OUR COMMUNITY SALES MANAGER  
Call Us @ 470.248.2103



Elevation A

Want to Know More  
About This Home?

CONTACT OUR COMMUNITY SALES MANAGER  
Call Us @ 470.248.2103



Elevation A

Want to Know More  
About This Home?

CONTACT OUR COMMUNITY SALES MANAGER  
Call Us @ 470.248.2103



OPT Linear Fireplace

OPT Fireplace



OPT Freestanding Tub - Owner's Bath



OPT Screened or Covered Deck



OPT Shower - Terrace Bath



OPT Side Porch - Kitchen Front  
 \*Per Lot Fit



OPT Side Porch - Kitchen Middle  
 \*Per Lot Fit

Want to Know More  
 About This Home?

CONTACT OUR COMMUNITY SALES MANAGER  
 Call Us @ 470.248.2103