




PRICED AT  
**\$623,400**

 2676 Sq Ft

 4 Beds

 3.5 Baths

 2 Car Garage

 3.0 Story

Sizzling Summer Savings at Evanshire! \$5,000 IN CLOSING COST when using one of our 5-preferred lenders! TO-BE-BUILT home just one mile from downtown Duluth. Beautiful and welcoming entrance as you step inside the foyer with 10' ceilings on the main level with 8' interior doors, creating an expansive feel. The open floor plan is a modern touch, with a seamless flow between the kitchen and the family room. Off the family room there is a nook- perfect for a computer center. The entertainer's kitchen is a standout feature, boasting a sizeable kitchen island perfect for cooking and gathering with friends & family and features GE Profile appliances. Separate dining room is truly a haven for both everyday living and entertaining guests in style. On the second level, the Owners Retreat is one of the best features in the home, with a spa-like bathroom design giving you both your own side of the bathroom (HIS and HERS) featuring beautiful vanities and an amazing walk-in closet. 2 secondary bedrooms upstairs share a full bath. The terrace level has endless possibilities with a great big bedroom with full bath which could easily be used as a media room, game room or fitness room. ...

**Want to Know More  
About This Home?**

CONTACT OUR COMMUNITY SALES MANAGER  
Call Us @ 470.248.2103



Elevation A

Want to Know More  
About This Home?

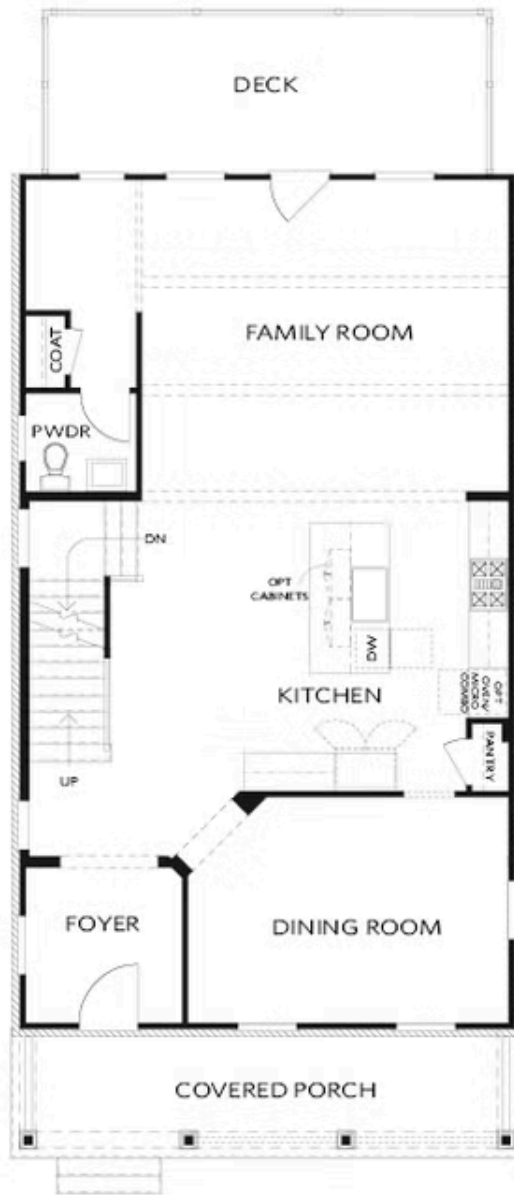
CONTACT OUR COMMUNITY SALES MANAGER  
Call Us @ 470.248.2103



Elevation A

Want to Know More  
About This Home?

CONTACT OUR COMMUNITY SALES MANAGER  
Call Us @ 470.248.2103



Elevation A

Want to Know More  
About This Home?

CONTACT OUR COMMUNITY SALES MANAGER  
Call Us @ 470.248.2103



Elevation A

Want to Know More  
About This Home?

CONTACT OUR COMMUNITY SALES MANAGER  
Call Us @ 470.248.2103



OPT Linear Fireplace

OPT Fireplace



OPT Freestanding Tub - Owner's Bath



OPT Screened or Covered Deck



OPT Shower - Terrace Bath



OPT Side Porch - Kitchen Front  
 \*Per Lot Fit



OPT Side Porch - Kitchen Middle  
 \*Per Lot Fit

Want to Know More  
 About This Home?

CONTACT OUR COMMUNITY SALES MANAGER  
 Call Us @ 470.248.2103