




PRICED AT  
**\$649,625**

 2676 Sq Ft

 4 Beds

 3.5 Baths

 2 Car Garage

 3.0 Story

Sizzling Summer Savings at Evanshire! TO BE BUILT! \*\*\*\*\$5,000 IN CLOSING COST when using one of our 5-preferred lenders.\*\*\*\* Choose all your design selections and personalize to your liking. Charismatic charm and tranquil living converge in perfect harmony. Welcome to the epitome of open-concept living in the beautiful 4 bedrooms, 3.5 bath Greenville home design, where the seamless flow between the kitchen and family room creates a harmonious environment filled with warmth and light. As you enter the foyer, you will be greeted with 10' ceilings on the main level with 8' interior doors that invites natural light to flood every corner. The kitchen, adorned with modern finishes and sleek appliances, opens effortlessly into the family room, allowing for easy interaction and connectivity between spaces. Whether you're preparing a meal or entertaining guests, you'll never miss a moment of the action thanks to the unobstructed views that span from the kitchen to the family room. The kitchen serves as the heart of the home, with a large island perfect for gathering and conversation. The dining area, surrounded by windows, creates a bright and inviting space for meals with family and friends. With its open design and abundant natural light, this ...

**Want to Know More  
About This Home?**

CONTACT OUR COMMUNITY SALES MANAGER  
Call Us @ 470.248.2103



Elevation A

Want to Know More  
About This Home?

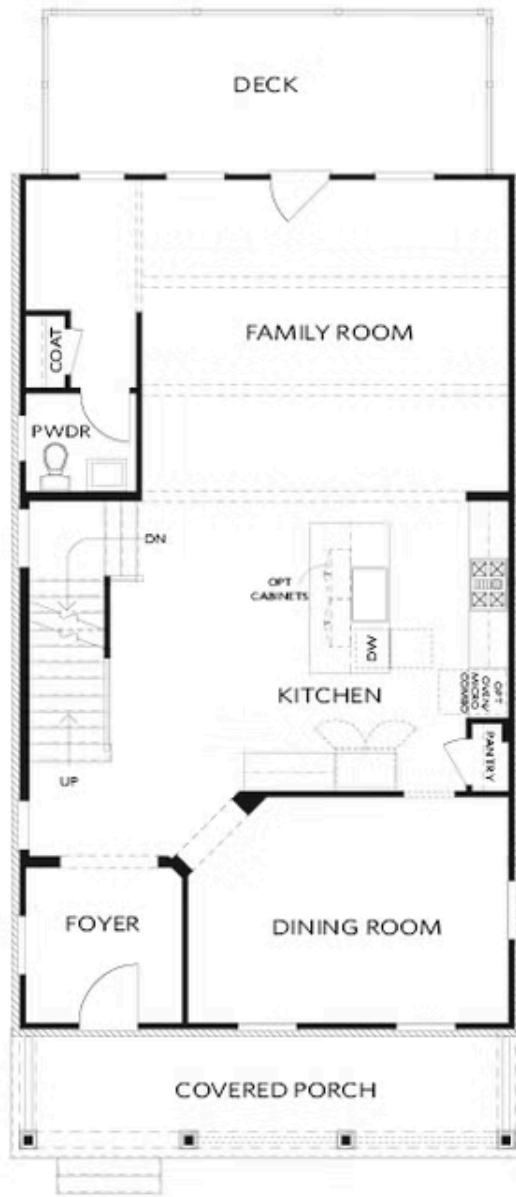
CONTACT OUR COMMUNITY SALES MANAGER  
Call Us @ 470.248.2103



Elevation A

Want to Know More  
About This Home?

CONTACT OUR COMMUNITY SALES MANAGER  
Call Us @ 470.248.2103



Elevation A

Want to Know More  
About This Home?

CONTACT OUR COMMUNITY SALES MANAGER  
Call Us @ 470.248.2103



Elevation A

Want to Know More  
About This Home?

CONTACT OUR COMMUNITY SALES MANAGER  
Call Us @ 470.248.2103



OPT Linear Fireplace

OPT Fireplace



OPT Freestanding Tub - Owner's Bath



OPT Screened or Covered Deck



OPT Shower - Terrace Bath



OPT Side Porch - Kitchen Front  
 \*Per Lot Fit



OPT Side Porch - Kitchen Middle  
 \*Per Lot Fit

Want to Know More  
 About This Home?

CONTACT OUR COMMUNITY SALES MANAGER  
 Call Us @ 470.248.2103