




PRICED AT
\$530,400

 2073 Sq Ft

 3 Beds

 4.0 Baths

 2 Car Garage

 3.0 Story

Come check out the Garrison Home design by The Providence Group in a brand new community one mile from downtown Duluth! The Garrison is a beautiful floor plan with 4 bedrooms and 4 bathrooms. Enough space for everyone! Terrace level entry into a beautiful foyer and a large room that could be a wonderful flex space or 4th bedroom. There is a private bath on this level with a walk-in tile shower. On the main floor, you will find a bedroom with full bath tucked away making this a perfect guest suite. The main floor also offers a large, well designed kitchen that is open to the family room and dining area. The family room has double doors that open to a large deck, the perfect place to start or end your day! Head up to the 3rd floor where you find a very spacious owner's retreat with a large walk-in closet and a luxurious bathroom with dual vanity, soaking tub and tiled shower. The additional bedroom upstairs has a tray ceiling and includes its own walk-in closet and private bath. Big windows in the bedroom allow all the natural light to flow in. The HOA maintains the exterior of ...

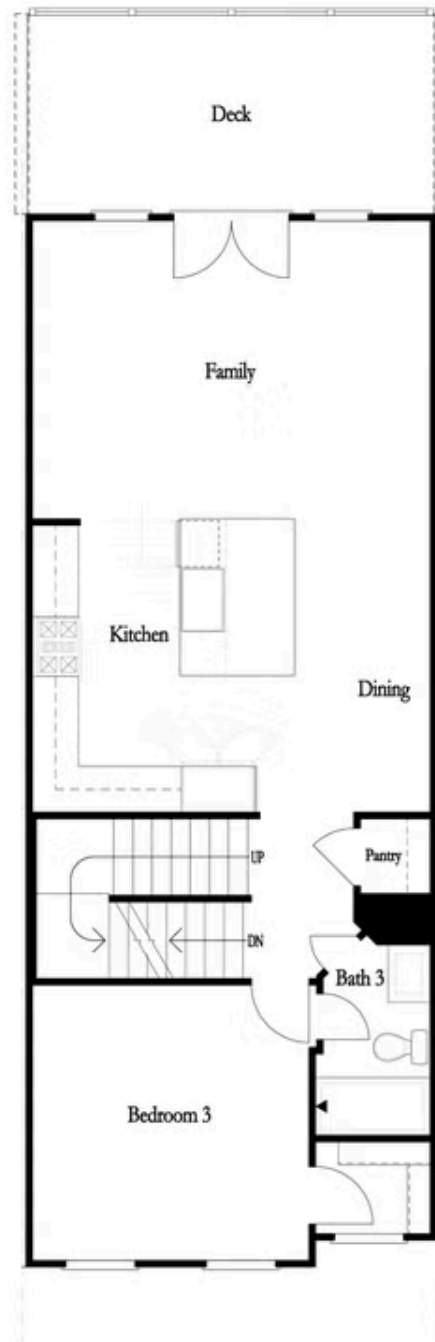
Want to Know More
About This Home?

CONTACT OUR COMMUNITY SALES MANAGER
Call Us @ 470.248.2103



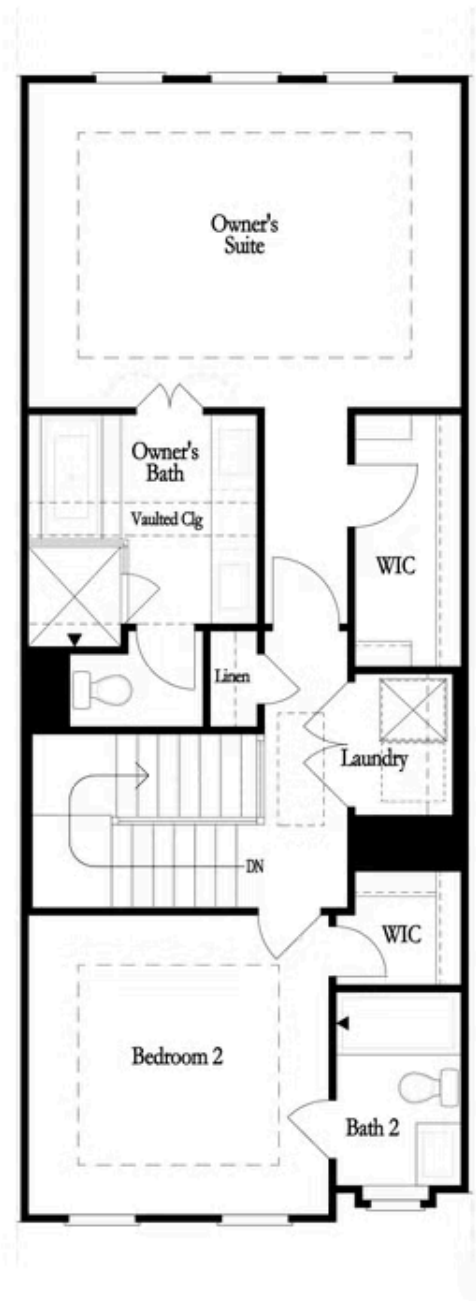
Want to Know More
About This Home?

CONTACT OUR COMMUNITY SALES MANAGER
Call Us @ 470.248.2103



Want to Know More
About This Home?

CONTACT OUR COMMUNITY SALES MANAGER
Call Us @ 470.248.2103

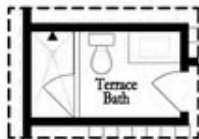


Want to Know More
About This Home?

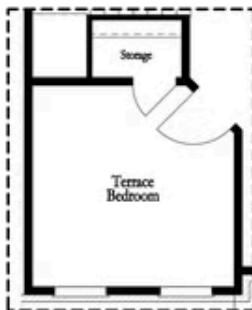
CONTACT OUR COMMUNITY SALES MANAGER
Call Us @ 470.248.2103



Opt. Dry Bar



Opt. Shower Only



Opt. Terrace Bedroom

FIRST FLOOR



Opt. Linear Fireplace



Opt. Fireplace

SECOND FLOOR

OPTIONS



Opt. Walk-In Shower



Opt. Freestanding Tub

THIRD FLOOR

Want to Know More
About This Home?

CONTACT OUR COMMUNITY SALES MANAGER
Call Us @ 470.248.2103