




PRICED AT
\$557,150

 2091 Sq Ft

 3 Beds

 3.5 Baths

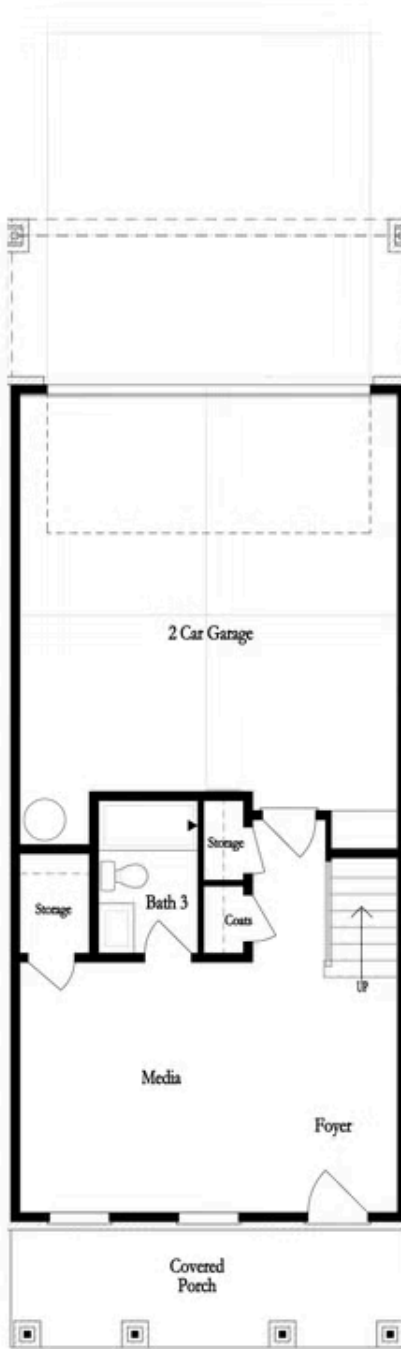
 2 Car Garage

 3.0 Story

New Year, New Home, New You! Elevate your life in 2024 with a new home by The Providence Group and \$5,000 towards closing cost with one of our Preferred Lenders. Come live in a Gated Neighborhood w/Low Maintenance Living at its best. HOA Maintained Exteriors, Lawn Care and more. The Sherwood is a beautiful floor plan with large bedrooms and an outstanding kitchen. When you open the front door, you are greeted by a beautiful wide foyer that leads to a bedroom & private bath, a great space for guests or it would make a really large office. Upstairs, you truly have an open floor plan. Natural light flows through the home all during the day. The family room features a cozy fireplace with stacked white quartzite. The kitchen has a modern feel with white cabinets, 3x8 white subway tile and a beautiful dark quartz countertop - truly stunning. This open floor plan provides the best setup for entertaining or holiday fun! Head upstairs to the owners suite that has an awesome large closet, tray ceiling and a luxurious bath with a frameless shower and separate soaking tub. The additional bedroom upstairs is huge with its own walk in closet ...

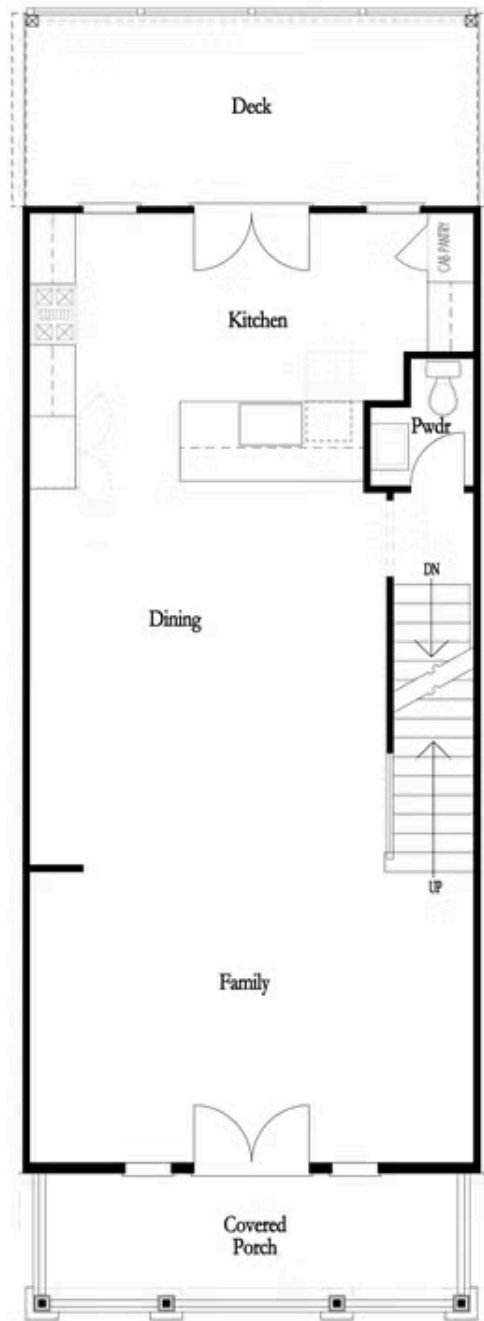
Want to Know More
About This Home?

CONTACT OUR COMMUNITY SALES MANAGER
Call Us @ 470.248.2103



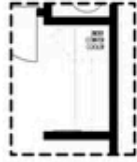
Want to Know More
About This Home?

CONTACT OUR COMMUNITY SALES MANAGER
Call Us @ 470.248.2103

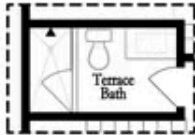


Want to Know More
About This Home?

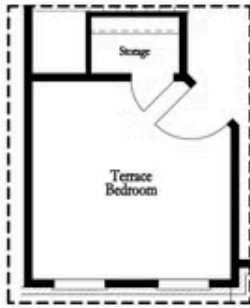
CONTACT OUR COMMUNITY SALES MANAGER
Call Us @ 470.248.2103



Opt. Dry Bar



Opt. Shower Only



Opt. Terrace Bedroom

FIRST FLOOR



Opt. Linear Fireplace



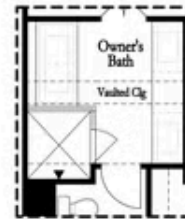
Opt. Fireplace

SECOND FLOOR

OPTIONS



Opt. Walk-In Shower



Opt. Freestanding Tub

THIRD FLOOR

Want to Know More
About This Home?

CONTACT OUR COMMUNITY SALES MANAGER
Call Us @ 470.248.2103