



PRICED AT
\$631,300

 2030 Sq Ft

 4 Beds

 3.5 Baths

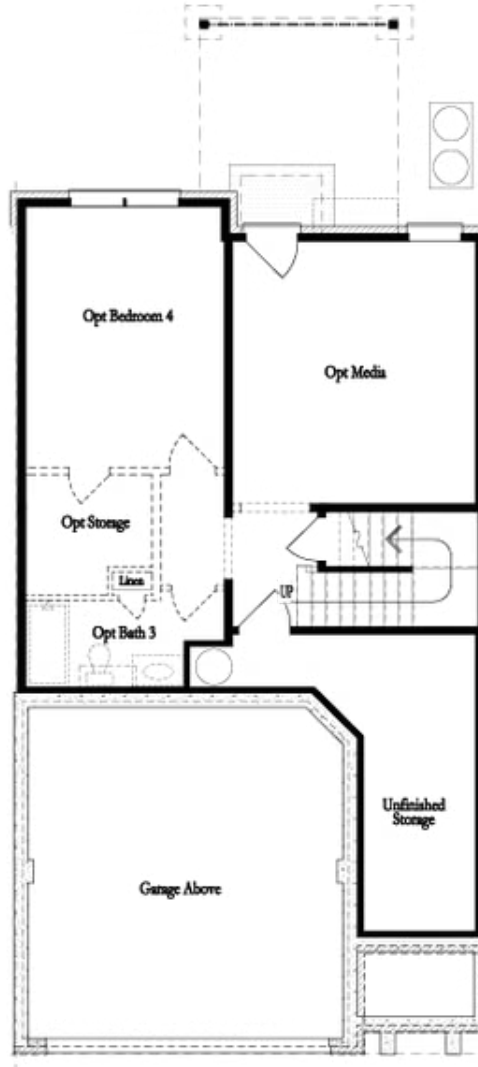
 2 Car Garage

 3.0 Story

Fabulous Fall Savings !!! ***\$15k ANY WAY YOU WANT when purchasing in September and using one of our 5-Preferred Lenders*** This END UNIT is a great location within the community! Upon entering, you step into a welcoming foyer that seamlessly transitions into the open-concept main floor featuring a family room, kitchen & dining area that is designed to maximize space & foster a sense of connectivity between the different living areas. The family room is the heart of the home. The linear fireplace warms the space creating a cozy atmosphere. Adjacent to the family rooms is the kitchen which is the centerpiece of the open floorplan. The kitchen boasts modern appliances, ample storage & high quality finishes. The white cabinets, quartz countertops, and subway tile backsplash exudes a timeless elegance and a sense of sophistication. The oversized island provides additional workspace & seating. It's a space where functionality meets style, making it a welcoming environment for cooking, dining, and gathering with friends and family. Next to the kitchen is the spacious dining area. Whether it's a quick breakfast before work or a leisurely dinner party, the dining area is versatile enough to accommodate any occasion. A rear deck is accessed ...

Want to Know More
About This Home?

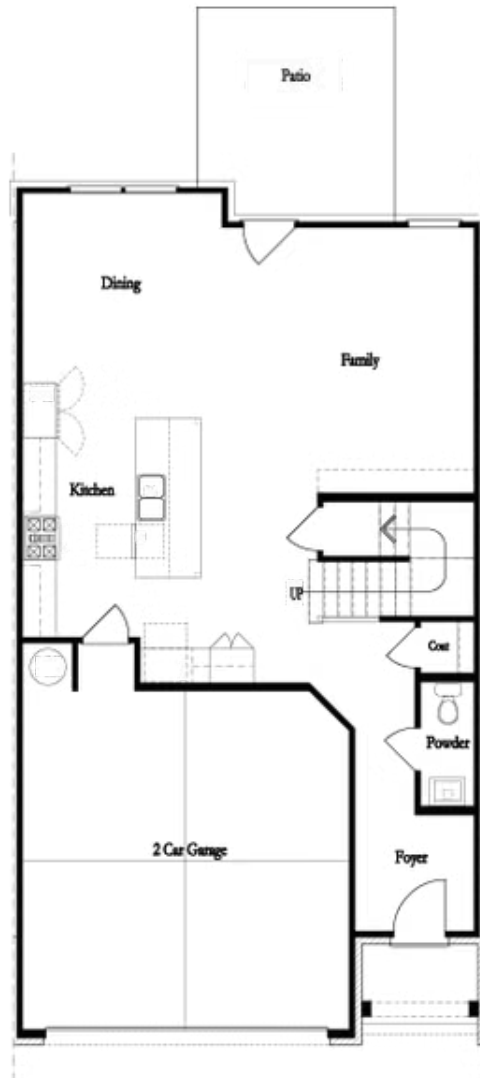
CONTACT OUR COMMUNITY SALES MANAGER
Call Us @ 470.248.2103



Unfinished Basement

Want to Know More
About This Home?

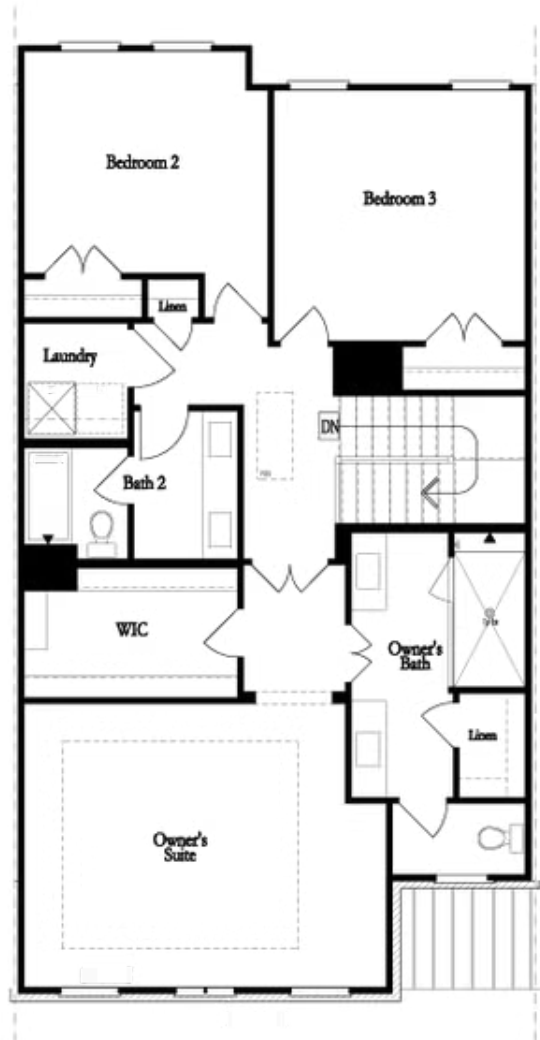
CONTACT OUR COMMUNITY SALES MANAGER
Call Us @ 470.248.2103



First Floor

**Want to Know More
About This Home?**

CONTACT OUR COMMUNITY SALES MANAGER
Call Us @ 470.248.2103

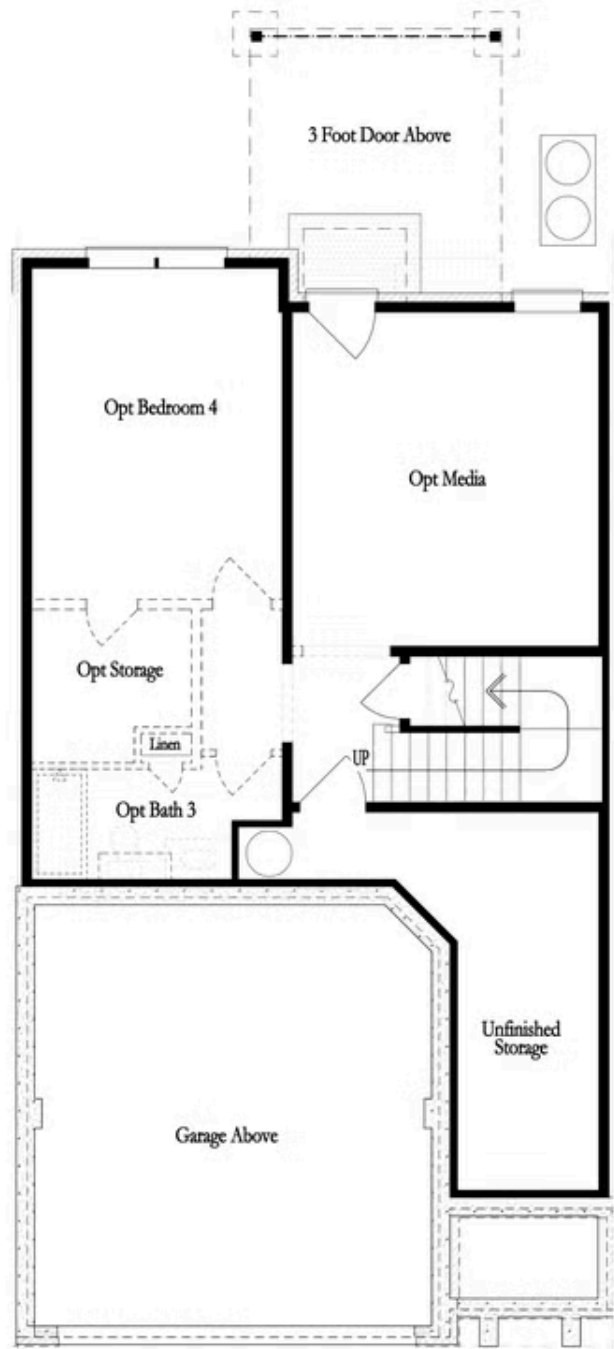


Second Floor
(Owner's Front)

Elevations G, H, JI, J3 & L

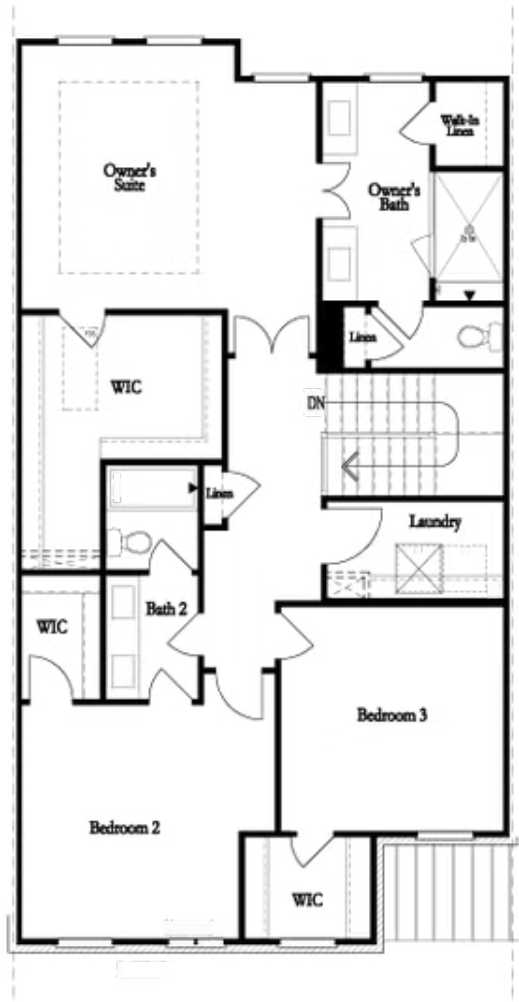
Want to Know More
About This Home?

CONTACT OUR COMMUNITY SALES MANAGER
Call Us @ 470.248.2103



Want to Know More
About This Home?

CONTACT OUR COMMUNITY SALES MANAGER
Call Us @ 470.248.2103

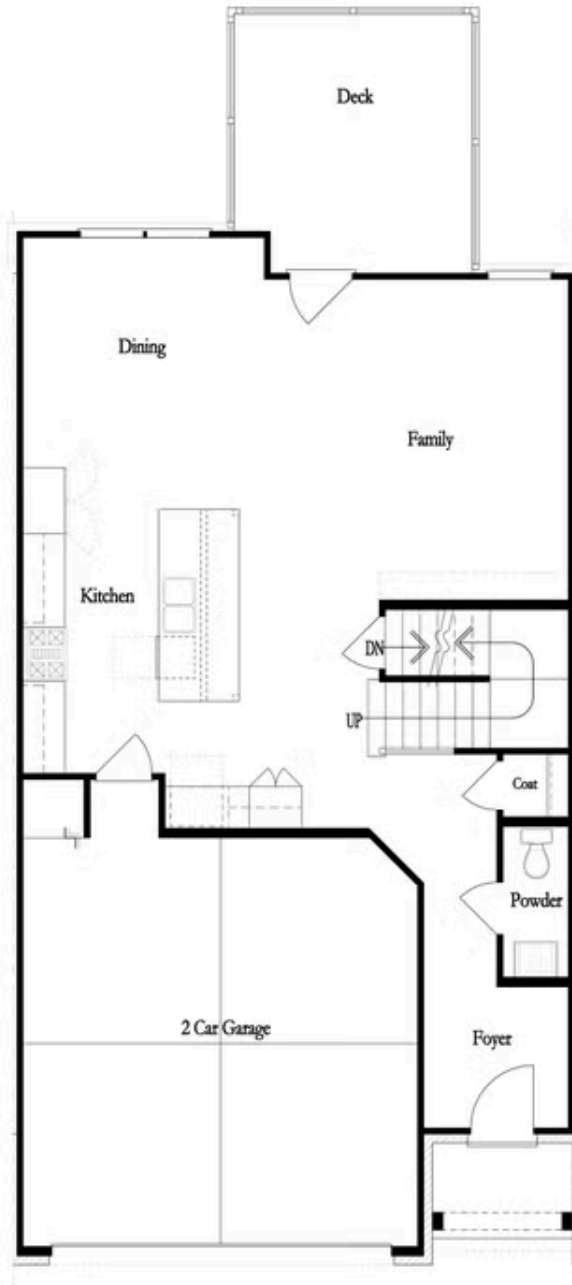


Second Floor
(Owner's Rear)

Elevations G, H, JI, J3 & L

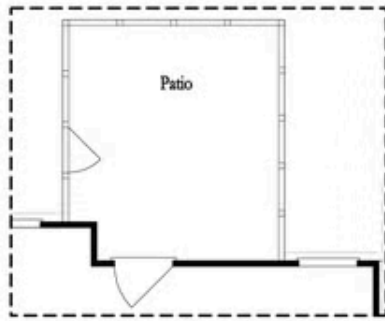
Want to Know More
About This Home?

CONTACT OUR COMMUNITY SALES MANAGER
Call Us @ 470.248.2103

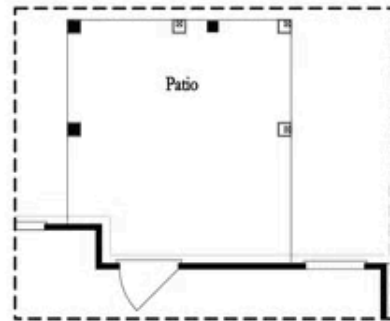


Want to Know More
About This Home?

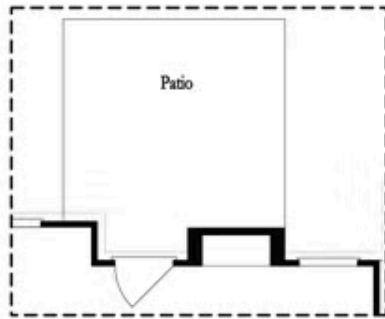
CONTACT OUR COMMUNITY SALES MANAGER
Call Us @ 470.248.2103



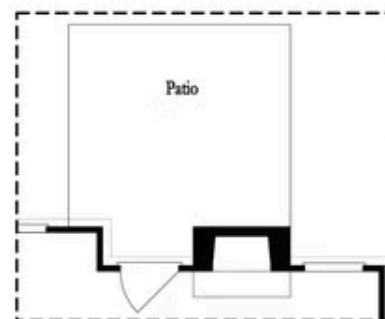
Opt. Screened Patio



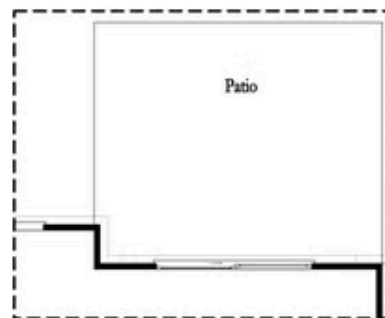
Opt. Coverd Patio



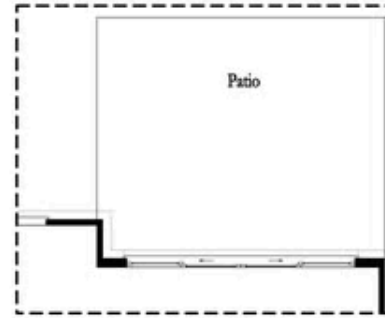
Opt. Linear Fireplace



Opt. Fireplace



Opt. 8 Foot Slider Door

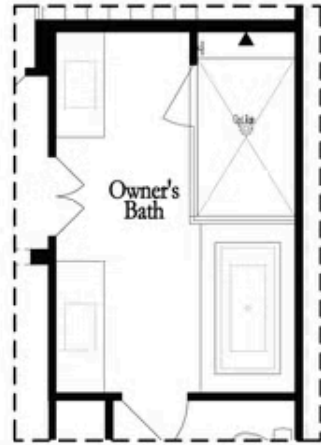


Opt. 12 Foot Slider Door

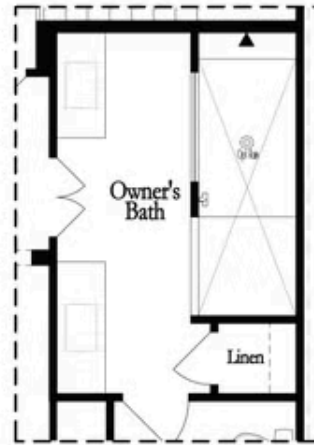
Main Level Options

Want to Know More
 About This Home?

CONTACT OUR COMMUNITY SALES MANAGER
 Call Us @ 470.248.2103

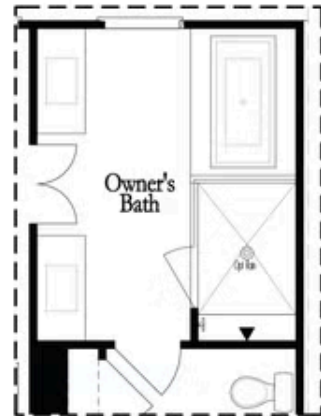


Opt. Shower/Tub

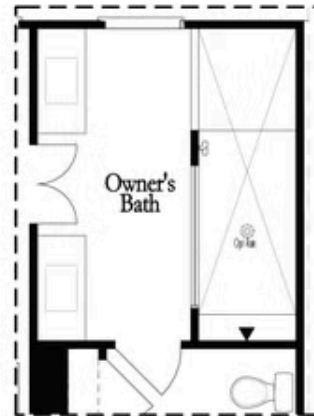


Opt. Walk-Through Shower

Owner's Front - Options



Opt. Shower/Tub

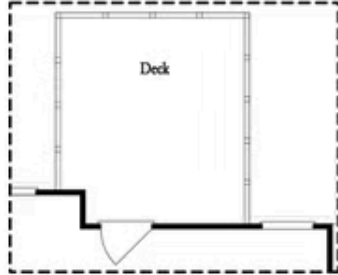


Opt. Walk-Through Shower

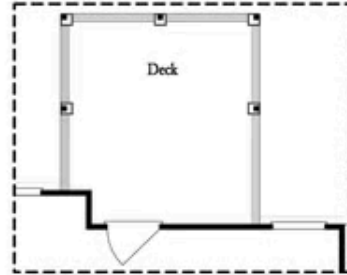
Owner's Rear - Options

Want to Know More
 About This Home?

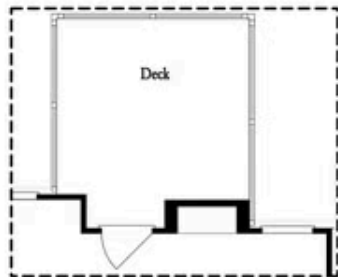
CONTACT OUR COMMUNITY SALES MANAGER
 Call Us @ 470.248.2103



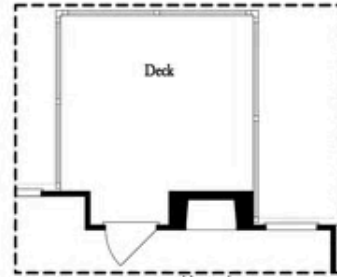
Opt. Screened Porch



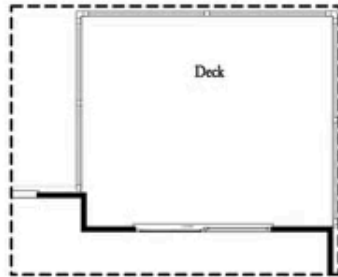
Opt. Covered Porch



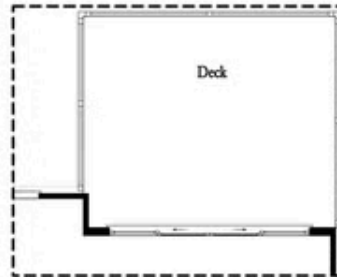
Opt. Linear Fireplace



Opt. Fireplace



Opt. 8' Slider Door



Opt. 12' Slider

OPTIONS
 FIRST FLOOR

Want to Know More
 About This Home?

CONTACT OUR COMMUNITY SALES MANAGER
 Call Us @ 470.248.2103