



PRICED AT
\$617,570

 2010 Sq Ft

 3 Beds

 2.5 Baths

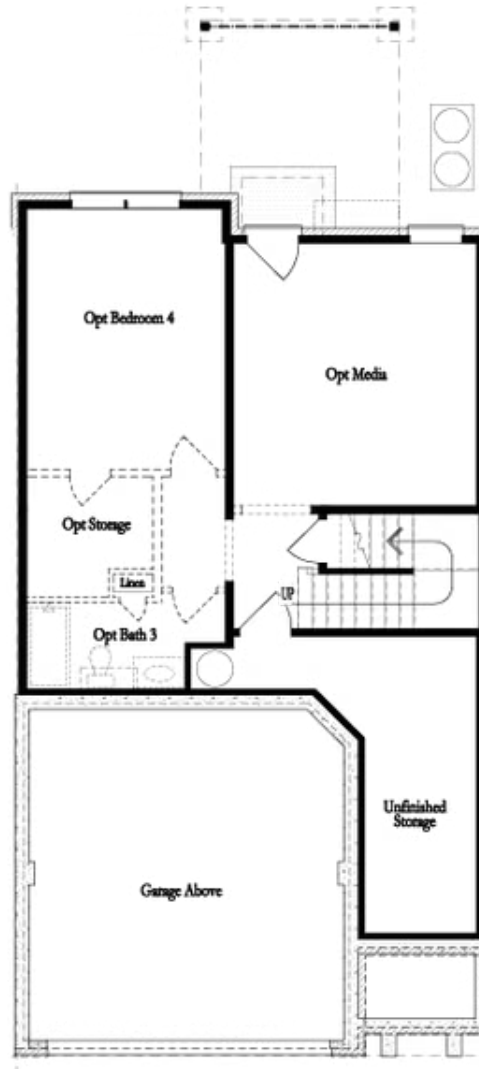
 2 Car Garage

 3.0 Story

~~~ NEW YEAR, NEW HOME, NEW YOU! ~~~ For a Limited Time Only - \$20k ANY WAY YOU WANT when using one of our 5-preferred lenders!\*\*\* MOVE IN READY!!! - Featuring the highly sought after Stockton plan. Upon entering the home, you step into a welcoming foyer that seamlessly transitions into the OPEN CONCEPT main floor featuring a family room, kitchen, and dining area is designed to maximize space and foster a sense of connectivity and flow between different living areas. The kitchen is equipped with GE stainless steel appliances, including a stove, vent hood, dishwasher, and microwave, all seamlessly integrated into the cabinetry for a sleek and cohesive look. The quartz countertops provide plenty of space for meal prep and serving. Stone colored cabinets with sleek hardware offer ample storage for cookware, utensils, and pantry items, keeping the space neat and organized. A large, oversized island provides a spot for casual dining and overlooks the family room. The rear, COVERED DECK provides a versatile space for relaxation, entertainment and enjoying the outdoors in comfort. As you ascend the staircase to the upper level of the townhome, you're greeted by the spacious and inviting primary bedroom. The room is located ...

**Want to Know More  
About This Home?**

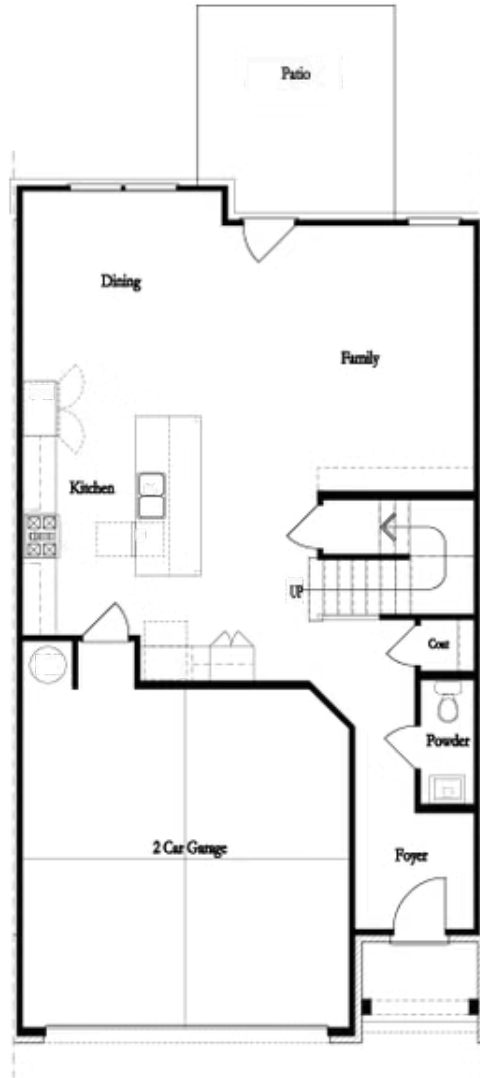
CONTACT OUR COMMUNITY SALES MANAGER  
Call Us @ 470.248.2103



**Unfinished Basement**

**Want to Know More  
About This Home?**

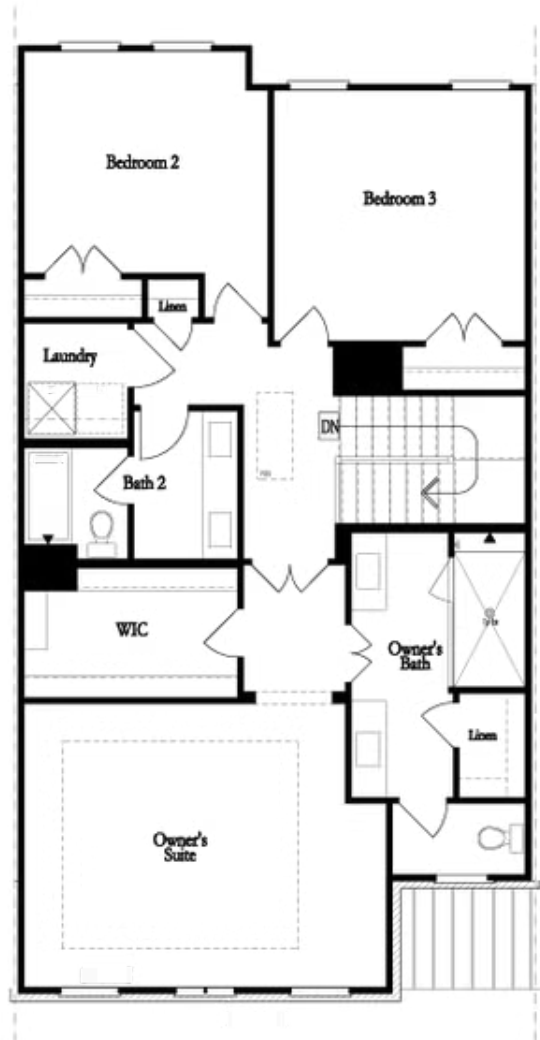
CONTACT OUR COMMUNITY SALES MANAGER  
Call Us @ 470.248.2103



**First Floor**

**Want to Know More  
About This Home?**

CONTACT OUR COMMUNITY SALES MANAGER  
Call Us @ 470.248.2103

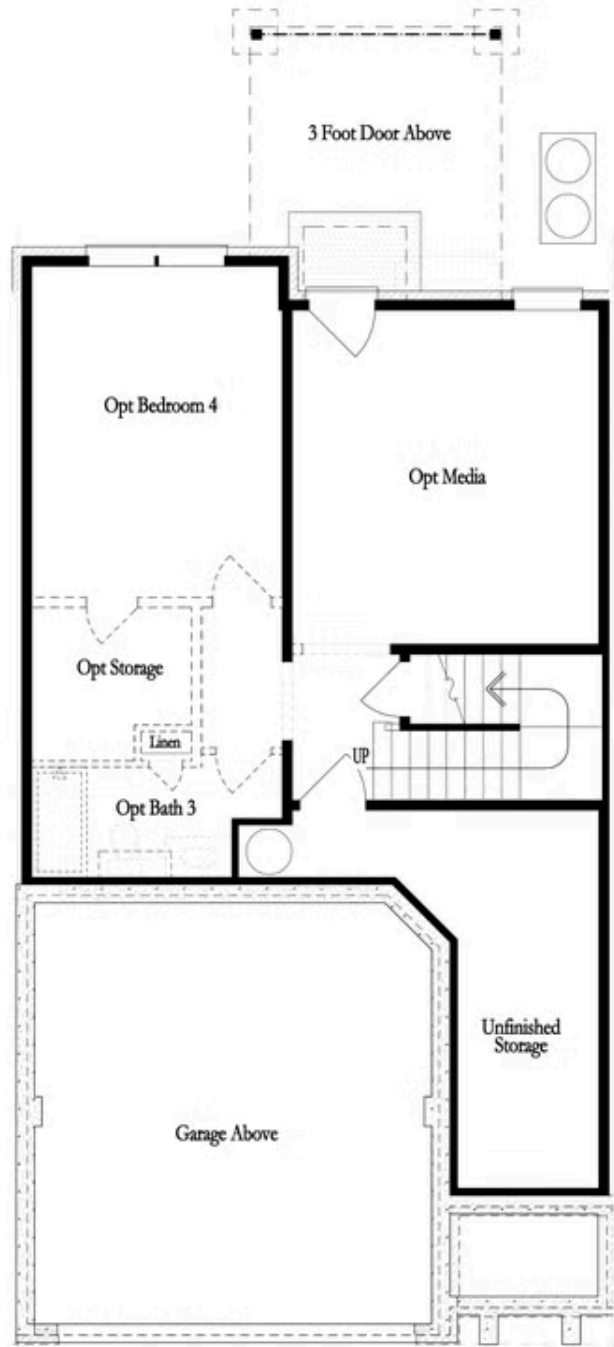


**Second Floor**  
**(Owner's Front)**

Elevations G, H, JI, J3 & L

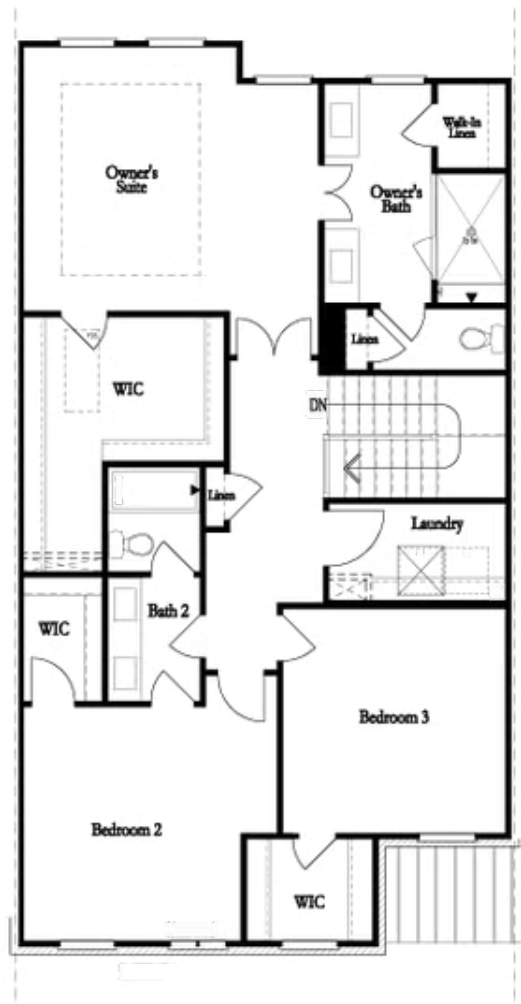
**Want to Know More  
About This Home?**

CONTACT OUR COMMUNITY SALES MANAGER  
Call Us @ 470.248.2103



Want to Know More  
About This Home?

CONTACT OUR COMMUNITY SALES MANAGER  
Call Us @ 470.248.2103

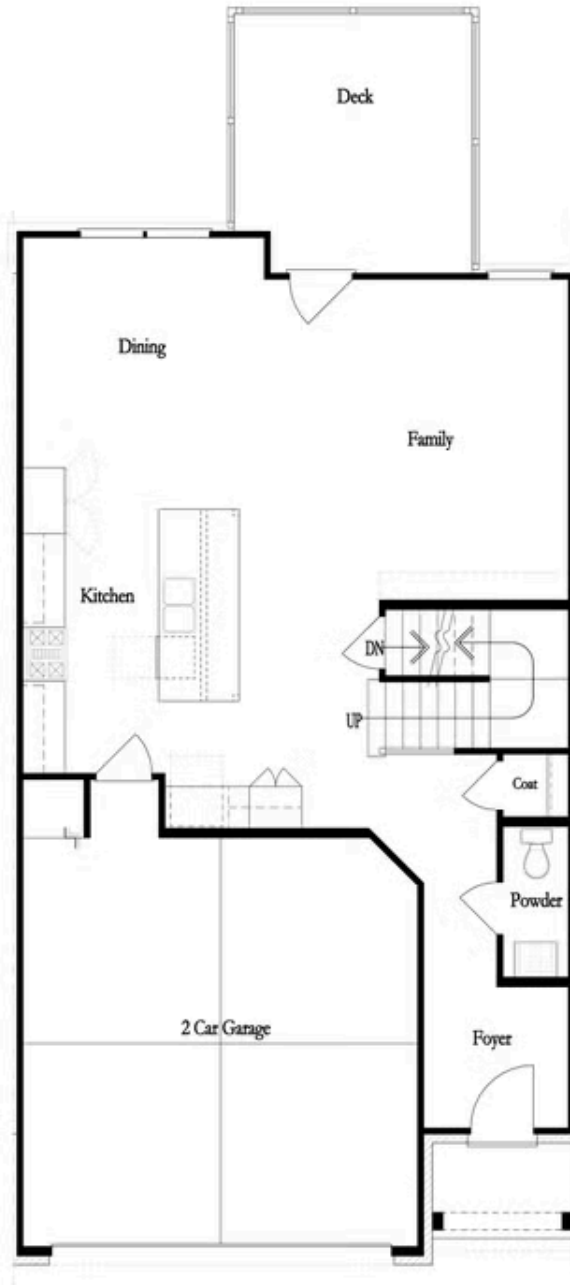


Second Floor  
(Owner's Rear)

Elevations G, H, JI, J3 & L

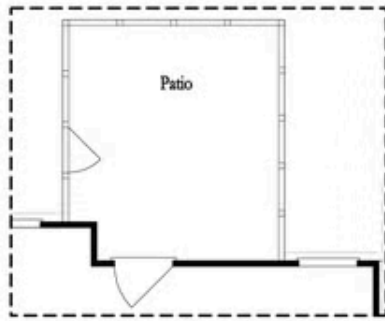
Want to Know More  
About This Home?

CONTACT OUR COMMUNITY SALES MANAGER  
Call Us @ 470.248.2103

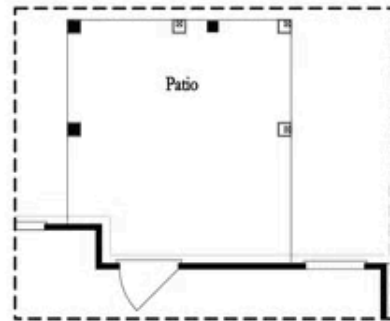


Want to Know More  
About This Home?

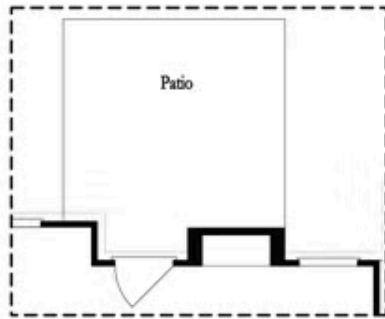
CONTACT OUR COMMUNITY SALES MANAGER  
Call Us @ 470.248.2103



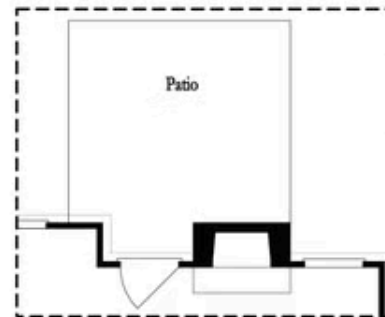
Opt. Screened Patio



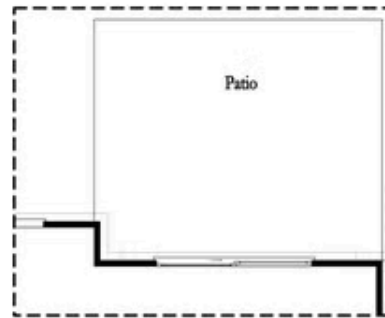
Opt. Coverd Patio



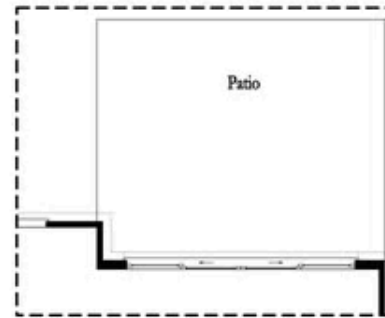
Opt. Linear Fireplace



Opt. Fireplace



Opt. 8 Foot Slider Door

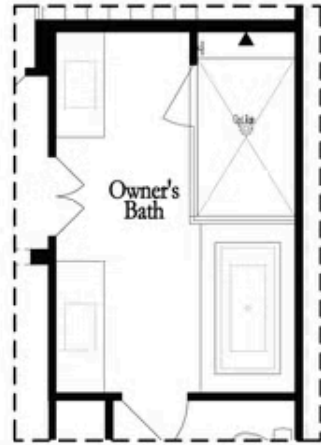


Opt. 12 Foot Slider Door

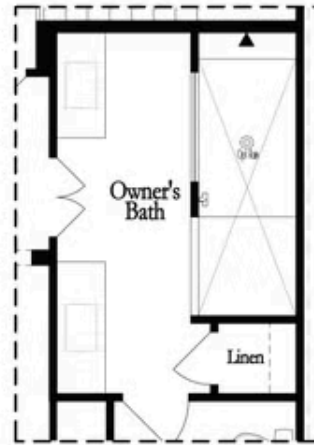
Main Level Options

Want to Know More  
 About This Home?

CONTACT OUR COMMUNITY SALES MANAGER  
 Call Us @ 470.248.2103

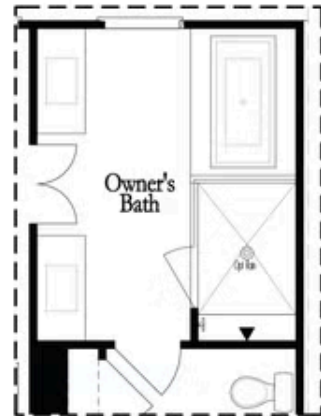


Opt. Shower/Tub

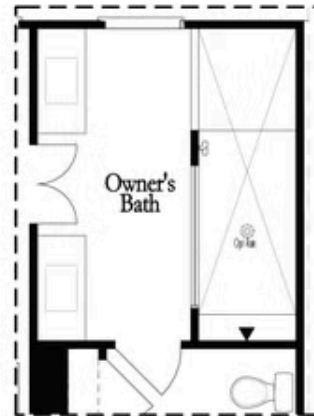


Opt. Walk-Through Shower

Owner's Front - Options



Opt. Shower/Tub

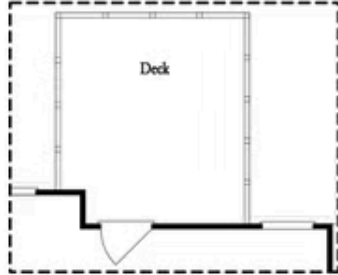


Opt. Walk-Through Shower

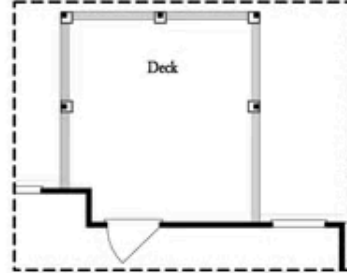
Owner's Rear - Options

Want to Know More  
 About This Home?

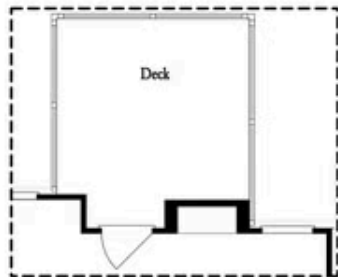
CONTACT OUR COMMUNITY SALES MANAGER  
 Call Us @ 470.248.2103



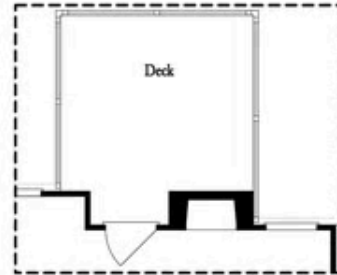
*Opt. Screened Porch*



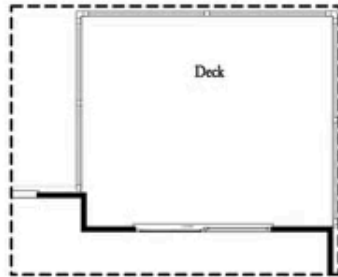
*Opt. Covered Porch*



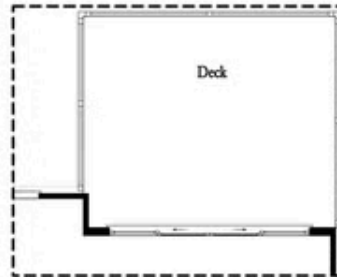
*Opt. Linear Fireplace*



*Opt. Fireplace*



*Opt. 8' Slider Door*



*Opt. 12' Slider*

OPTIONS  
 FIRST FLOOR

**Want to Know More  
 About This Home?**

CONTACT OUR COMMUNITY SALES MANAGER  
 Call Us @ 470.248.2103