



PRICED AT
\$637,070

 2010 Sq Ft

 3 Beds

 2.5 Baths

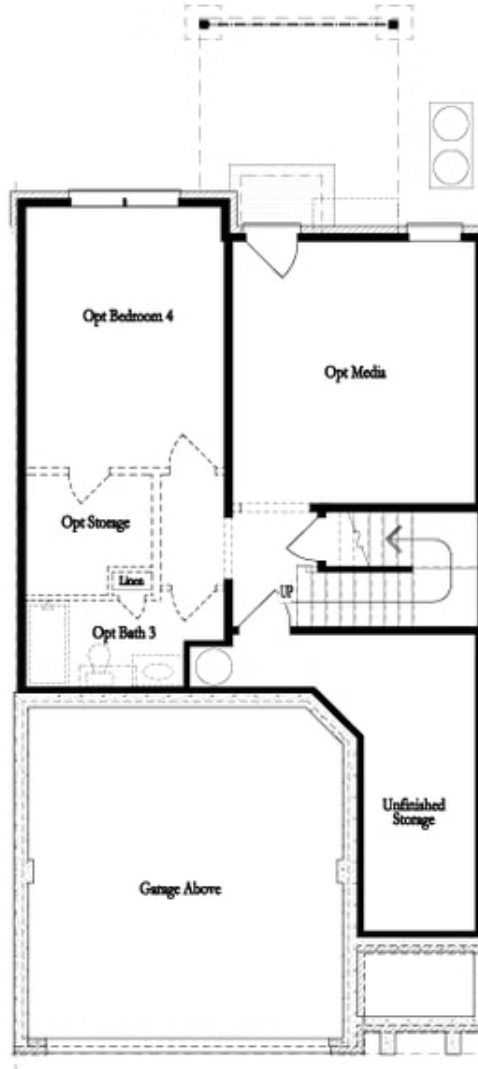
 2 Car Garage

 3.0 Story

~~~ NEW YEAR, NEW HOME, NEW YOU! ~~~ For a Limited Time Only - \$20k ANY WAY YOU WANT with one of our 5-preferred lenders!\*\*\* The Stockton END UNIT is indeed a remarkable floor plan, offering spacious bedrooms and a kitchen that's sure to impress. MOVE IN READY!!! With its versatile layout and luxurious amenities, this townhome provides the perfect blend of comfort and style. You'll be captivated by the expansive kitchen and family room. The kitchen boasts warm neutral tones, quartz countertops, a single bowl stainless sink, GE stainless steel appliances and a stylish tile backsplash, creating a sophisticated and inviting space for cooking and entertaining. Step through the massive 12' ALL GLASS SLIDING DOORS onto the large deck, perfect for outdoor gatherings. On the upper level, the expansive owner's suite awaits, offering a tranquil retreat after a busy day. Indulge in the luxury of the owner's tiled MEGA WALK-IN SHOWER w/ DRYING AREA, washing away the stress of the day. Two additional bedrooms with walk-in closets and a shared bath completes the upper level. The unfinished terrace level presents endless possibilities to adapt to your lifestyle needs. With the HOA maintaining the exterior of the building, residents can ...

**Want to Know More  
About This Home?**

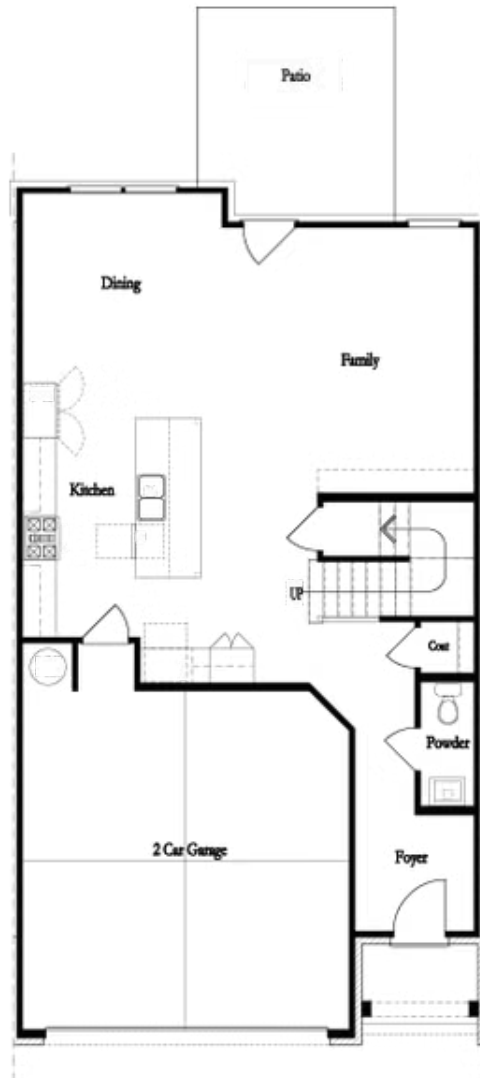
CONTACT OUR COMMUNITY SALES MANAGER  
Call Us @ 470.248.2103



**Unfinished Basement**

**Want to Know More  
About This Home?**

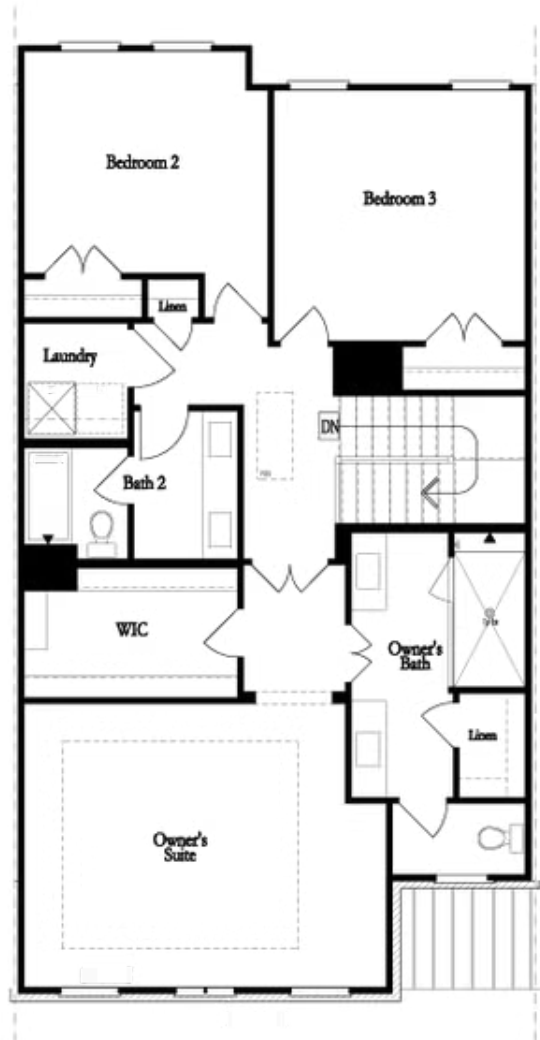
CONTACT OUR COMMUNITY SALES MANAGER  
Call Us @ 470.248.2103



**First Floor**

**Want to Know More  
About This Home?**

CONTACT OUR COMMUNITY SALES MANAGER  
Call Us @ 470.248.2103

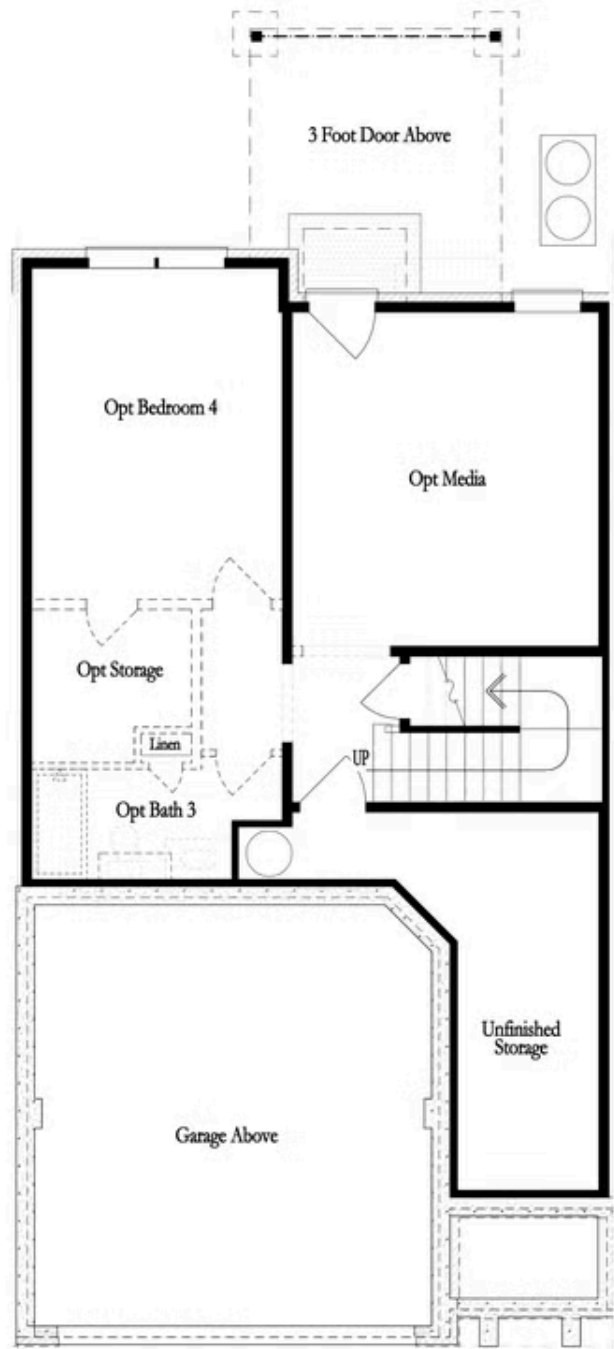


Second Floor  
(Owner's Front)

Elevations G, H, JI, J3 & L

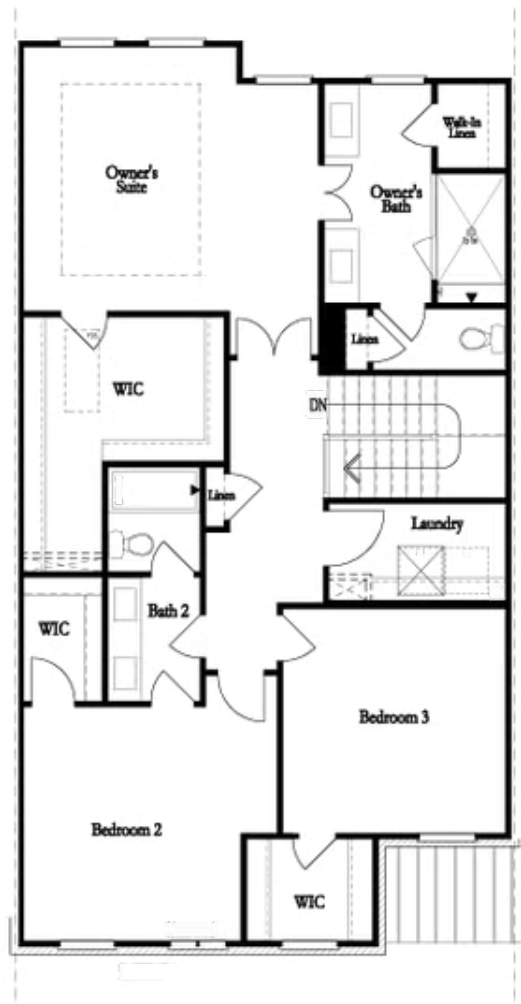
Want to Know More  
About This Home?

CONTACT OUR COMMUNITY SALES MANAGER  
Call Us @ 470.248.2103



Want to Know More  
About This Home?

CONTACT OUR COMMUNITY SALES MANAGER  
Call Us @ 470.248.2103

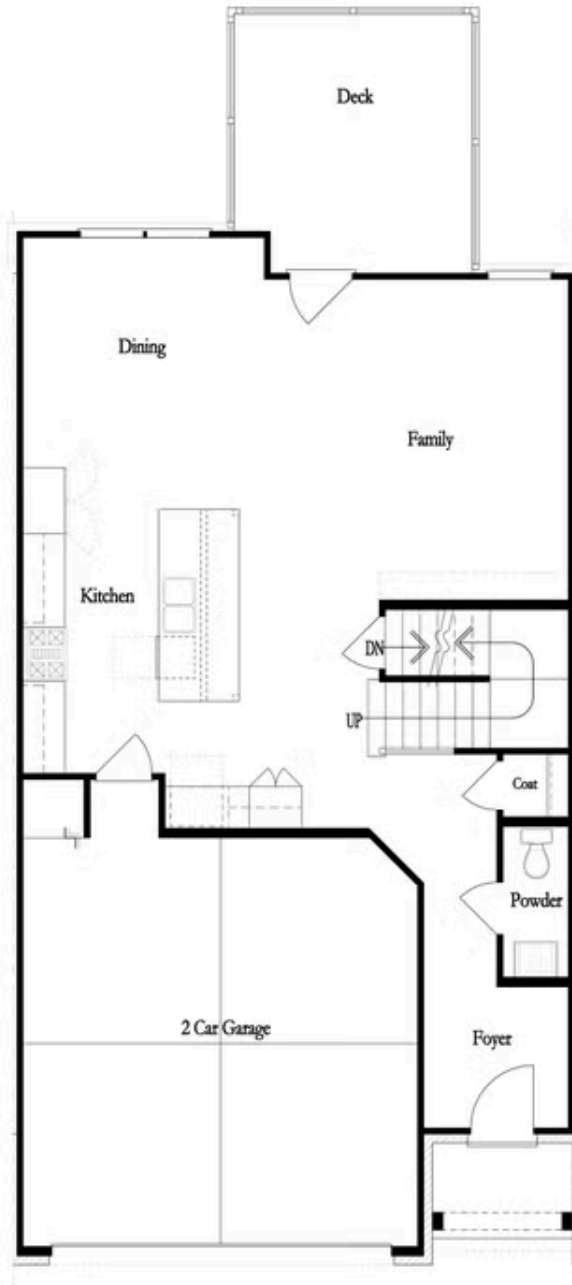


Second Floor  
(Owner's Rear)

Elevations G, H, JI, J3 & L

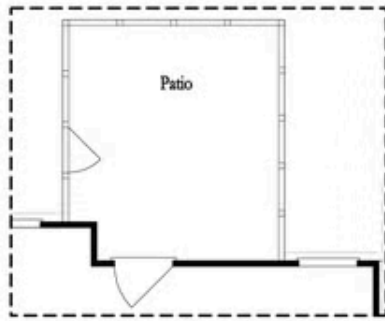
Want to Know More  
About This Home?

CONTACT OUR COMMUNITY SALES MANAGER  
Call Us @ 470.248.2103

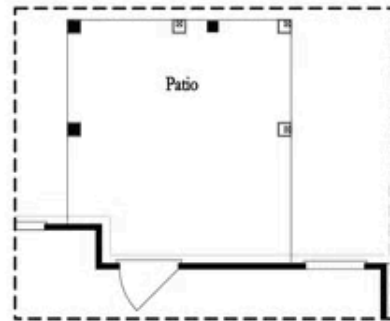


Want to Know More  
About This Home?

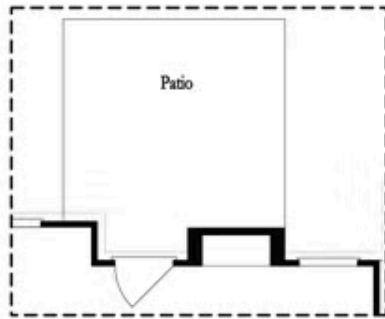
CONTACT OUR COMMUNITY SALES MANAGER  
Call Us @ 470.248.2103



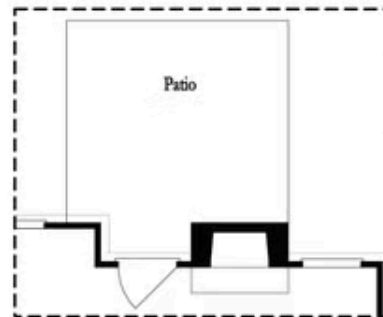
Opt. Screened Patio



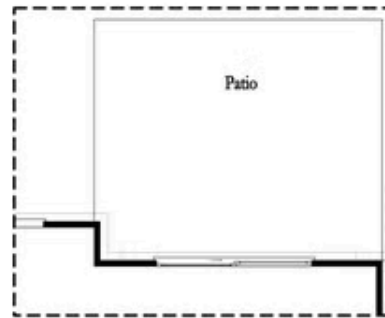
Opt. Coverd Patio



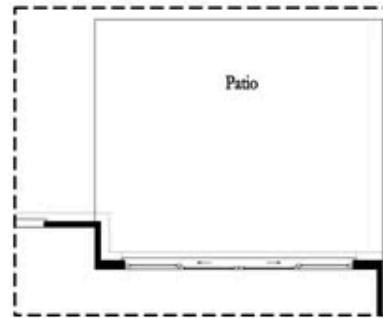
Opt. Linear Fireplace



Opt. Fireplace



Opt. 8 Foot Slider Door

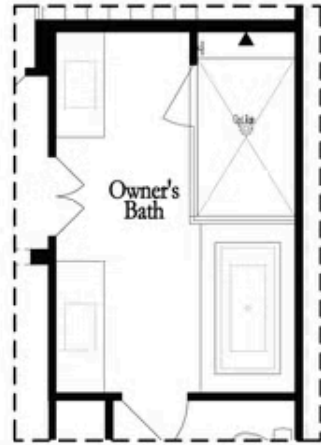


Opt. 12 Foot Slider Door

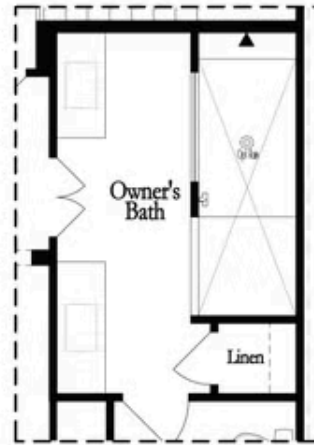
Main Level Options

Want to Know More  
 About This Home?

CONTACT OUR COMMUNITY SALES MANAGER  
 Call Us @ 470.248.2103

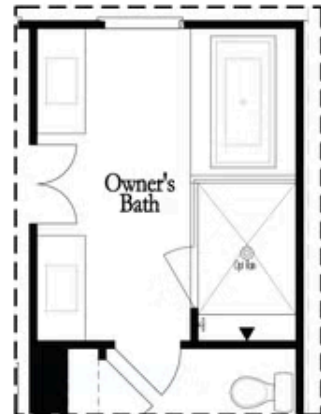


Opt. Shower/Tub

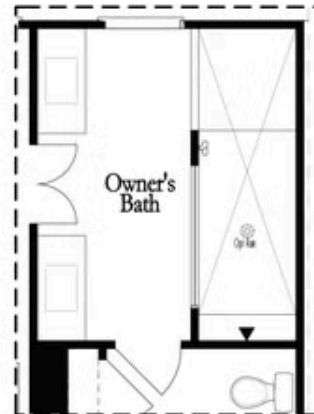


Opt. Walk-Through Shower

Owner's Front - Options



Opt. Shower/Tub

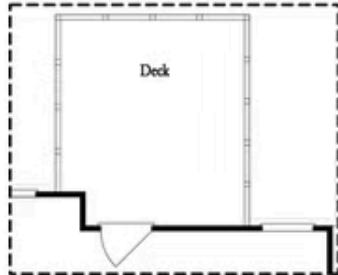


Opt. Walk-Through Shower

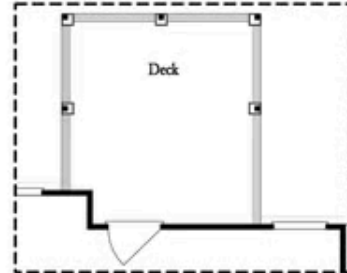
Owner's Rear - Options

Want to Know More  
 About This Home?

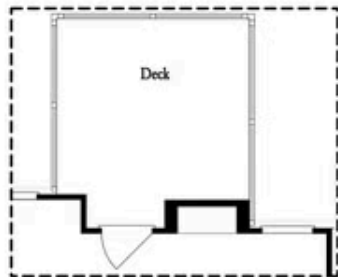
CONTACT OUR COMMUNITY SALES MANAGER  
 Call Us @ 470.248.2103



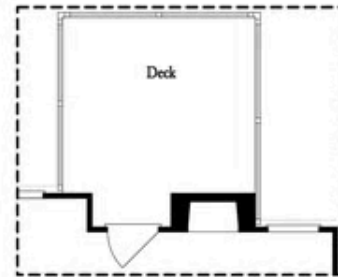
*Opt. Screened Porch*



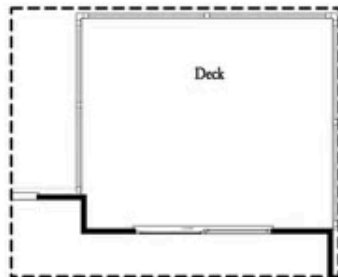
*Opt. Covered Porch*



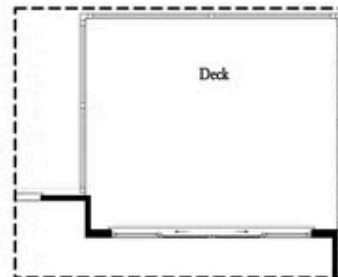
*Opt. Linear Fireplace*



*Opt. Fireplace*



*Opt. 8' Slider Door*



*Opt. 12' Slider*

OPTIONS  
FIRST FLOOR

Want to Know More  
About This Home?

CONTACT OUR COMMUNITY SALES MANAGER  
Call Us @ 470.248.2103