



PRICED AT  
**\$647,380**

 2010 Sq Ft

 3 Beds

 2.5 Baths

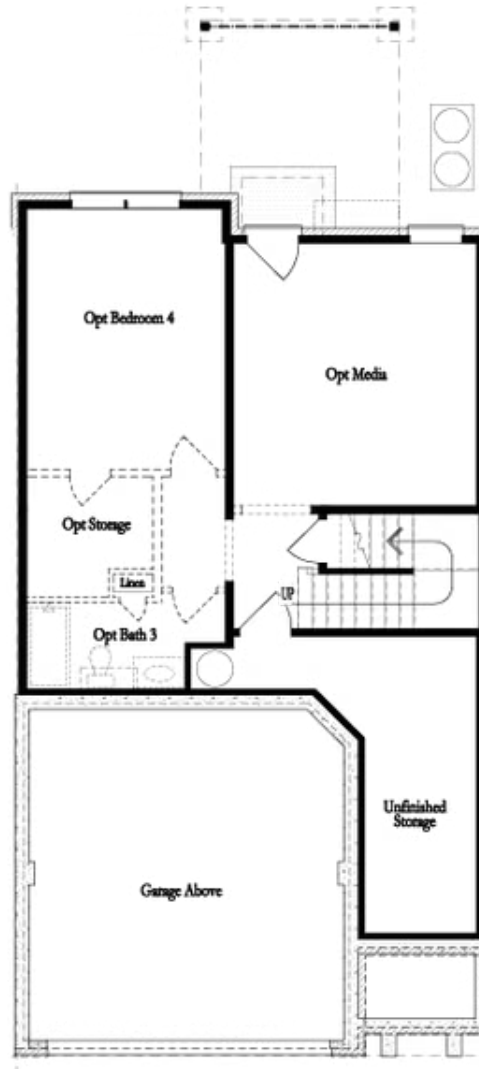
 2 Car Garage

 3.0 Story

~~~ FALL INTO SAVINGS ~~~ For a Limited Time Only - \$25k ANY WAY YOU WANT when using one of our 5-preferred lenders!\*\*\* MOVE IN READY!!! The Stockton END UNIT by THE PROVIDENCE GROUP is here to make all your home dreams come true. OPEN CONCEPT LIVING offering spacious bedrooms and a kitchen that's sure to impress with a jaw dropping large island. With its versatile layout and luxurious amenities, this townhome provides the perfect blend of comfort and style. You'll be captivated by the expansive kitchen and family room offering a LINEAR FIREPLACE for cozying up on those cold Georgia nights. The kitchen boasts warm Cool Stone tones, quartz countertops, a single bowl stainless sink, stainless steel appliances and a stylish tile backsplash, creating a sophisticated and inviting space for cooking and entertaining. Step outside to your COVERED DECK and enjoy the sound of the birds chirping and a sunrise morning coffee. On the upper level, the expansive Owner's Suite with HUGE WALK IN CLOSET awaits, offering a tranquil retreat after a busy day. Indulge in the luxury of the owner's tiled shower washing away the stress in your TUB from the day. There are even TRANQUIL VIEWS from ...

**Want to Know More  
About This Home?**

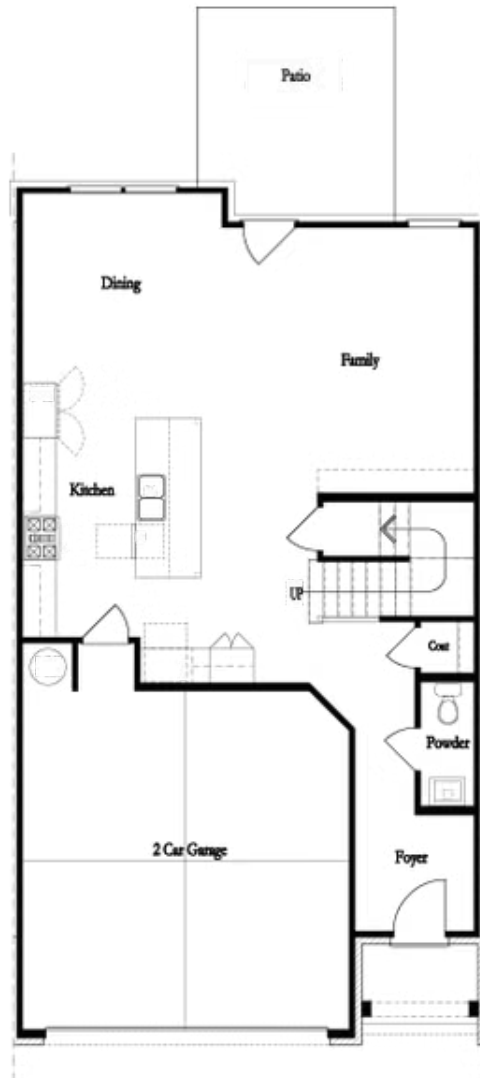
CONTACT OUR COMMUNITY SALES MANAGER  
Call Us @ 470.248.2103



**Unfinished Basement**

**Want to Know More  
About This Home?**

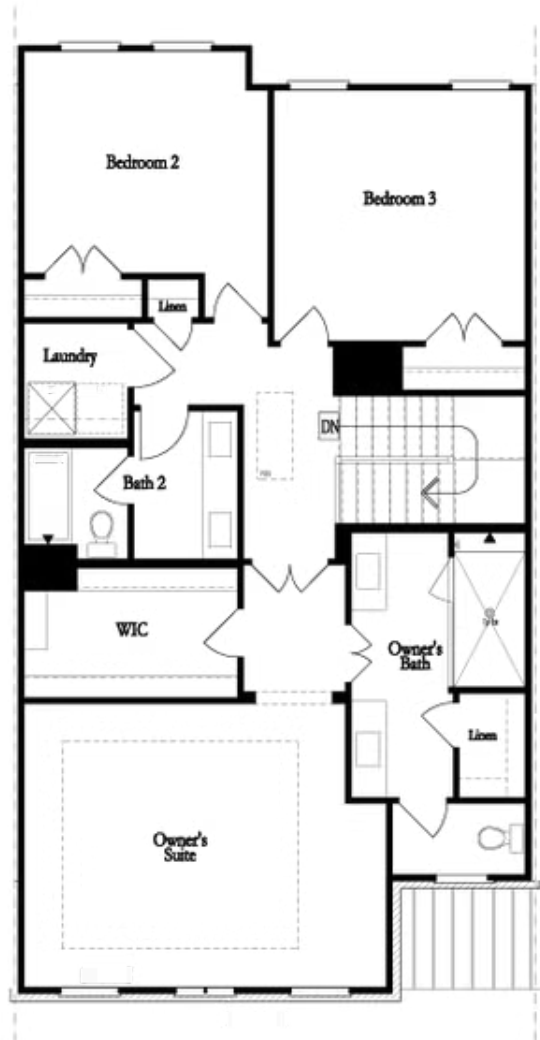
CONTACT OUR COMMUNITY SALES MANAGER  
Call Us @ 470.248.2103



**First Floor**

**Want to Know More  
About This Home?**

CONTACT OUR COMMUNITY SALES MANAGER  
Call Us @ 470.248.2103

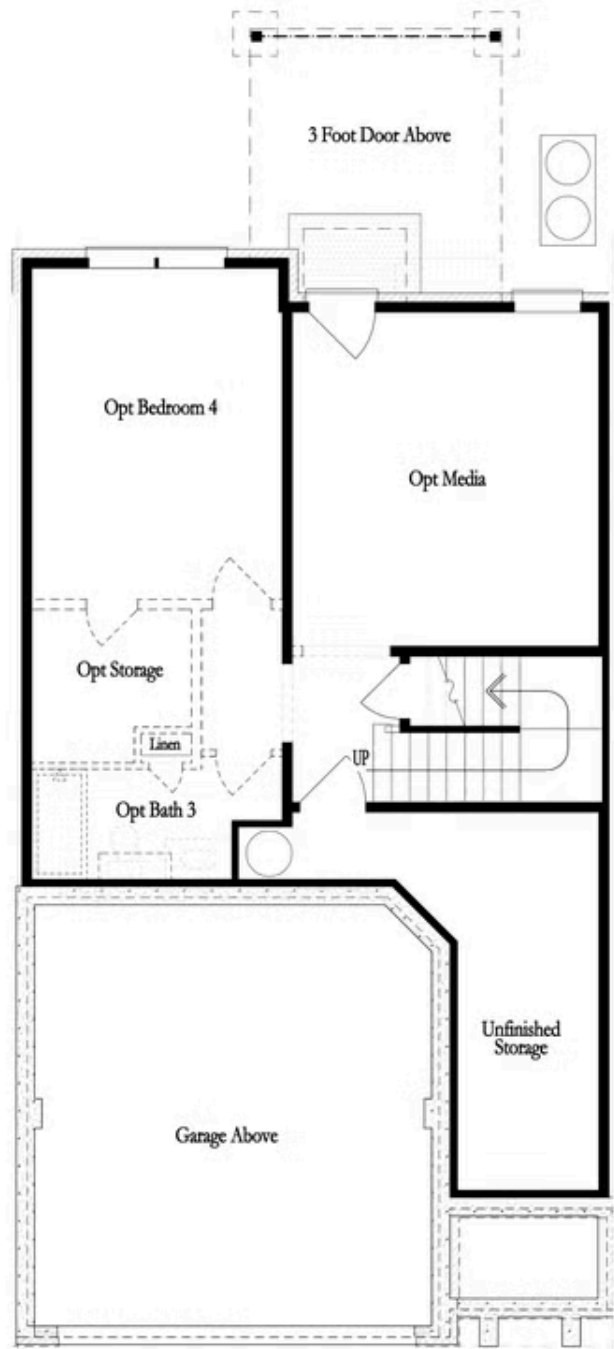


Second Floor  
(Owner's Front)

Elevations G, H, JI, J3 & L

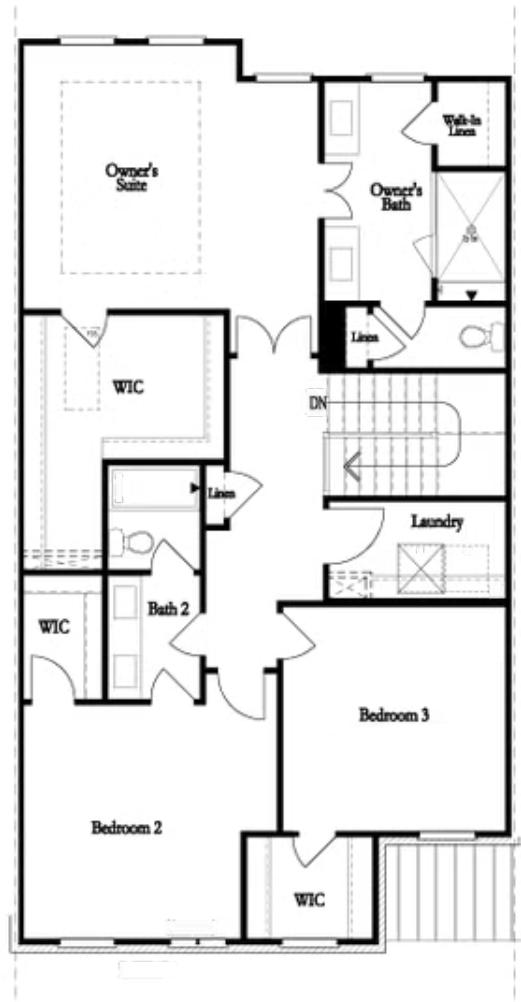
Want to Know More  
About This Home?

CONTACT OUR COMMUNITY SALES MANAGER  
Call Us @ 470.248.2103



Want to Know More  
About This Home?

CONTACT OUR COMMUNITY SALES MANAGER  
Call Us @ 470.248.2103

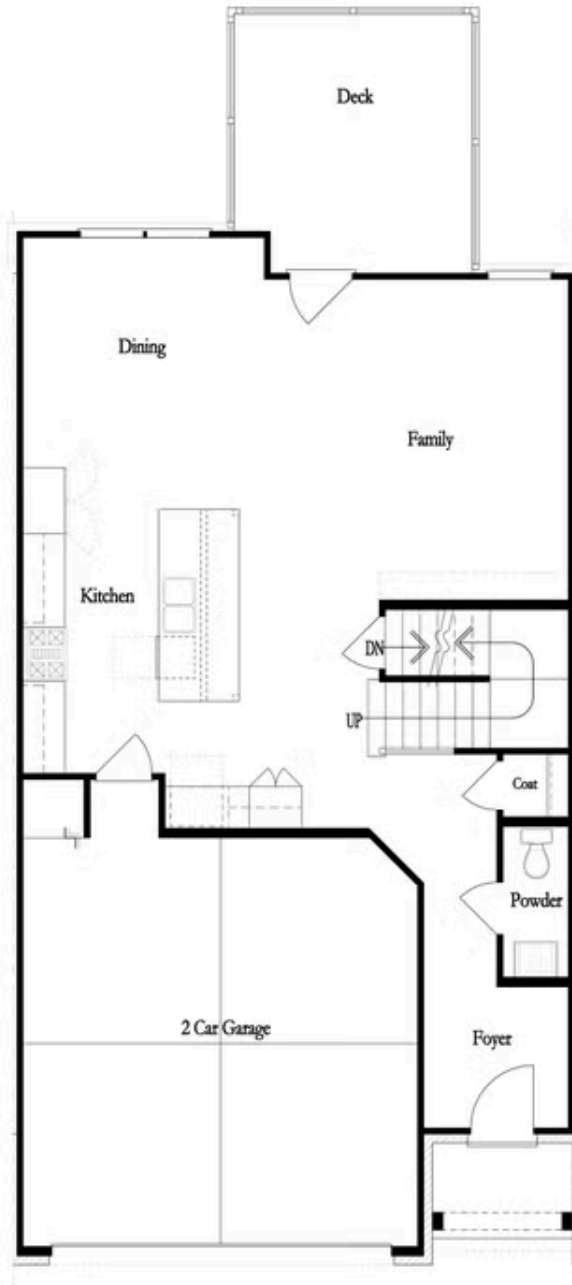


Second Floor  
(Owner's Rear)

Elevations G, H, JI, J3 & L

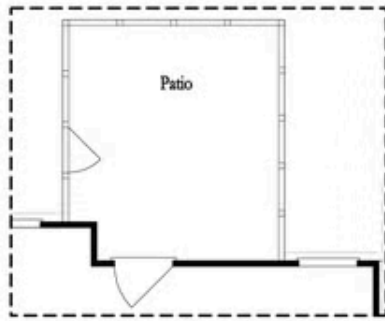
Want to Know More  
About This Home?

CONTACT OUR COMMUNITY SALES MANAGER  
Call Us @ 470.248.2103

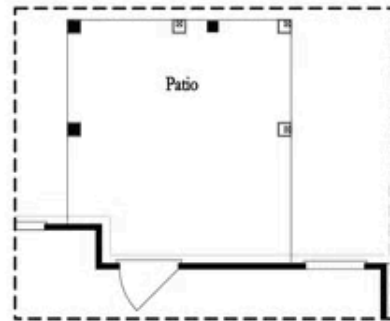


Want to Know More  
About This Home?

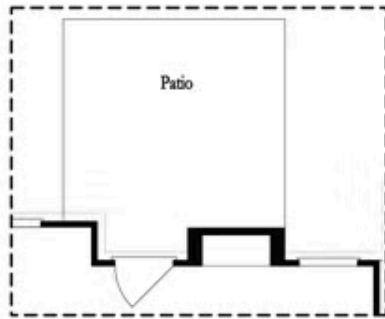
CONTACT OUR COMMUNITY SALES MANAGER  
Call Us @ 470.248.2103



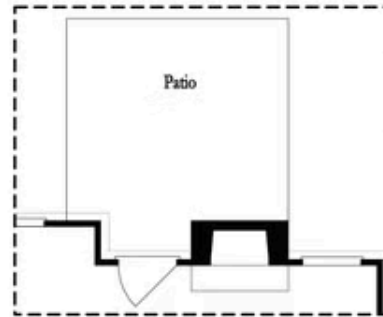
Opt. Screened Patio



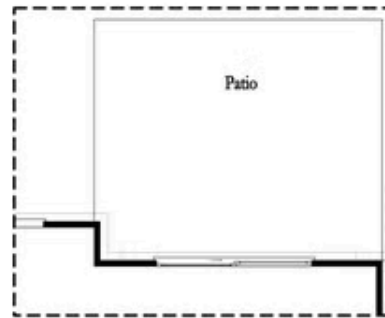
Opt. Coverd Patio



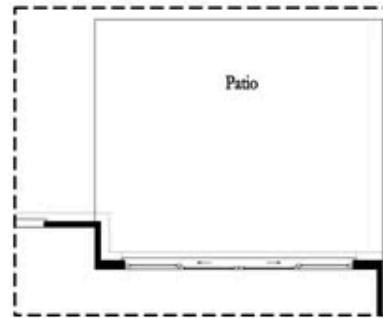
Opt. Linear Fireplace



Opt. Fireplace



Opt. 8 Foot Slider Door

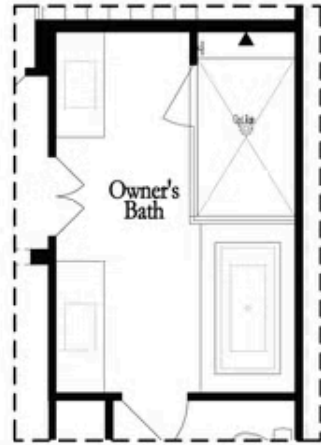


Opt. 12 Foot Slider Door

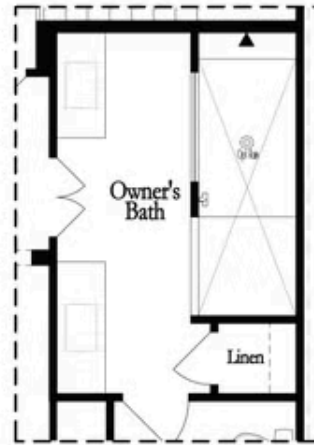
Main Level Options

Want to Know More  
 About This Home?

CONTACT OUR COMMUNITY SALES MANAGER  
 Call Us @ 470.248.2103

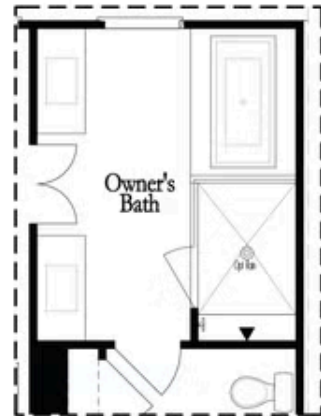


Opt. Shower/Tub

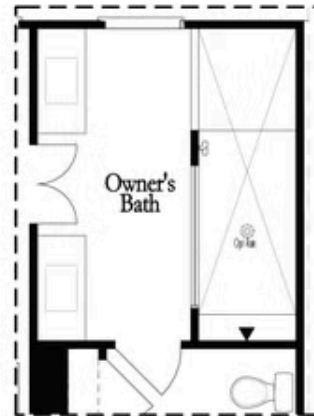


Opt. Walk-Through Shower

Owner's Front - Options



Opt. Shower/Tub

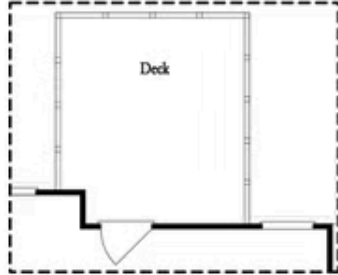


Opt. Walk-Through Shower

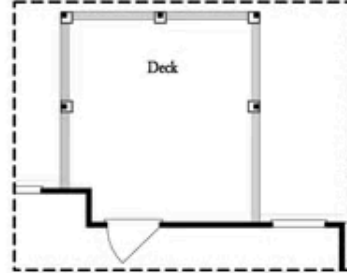
Owner's Rear - Options

Want to Know More  
 About This Home?

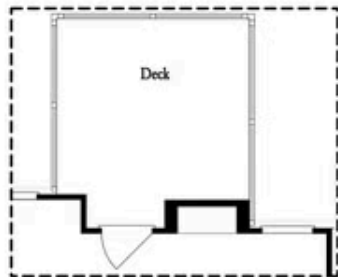
CONTACT OUR COMMUNITY SALES MANAGER  
 Call Us @ 470.248.2103



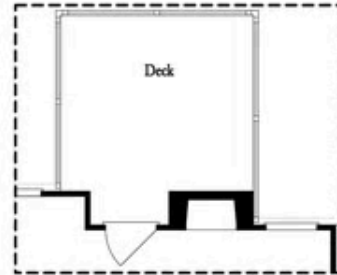
*Opt. Screened Porch*



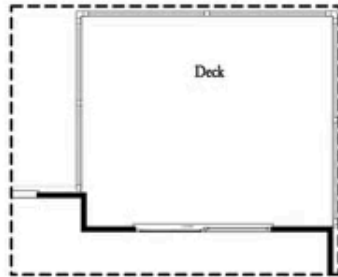
*Opt. Covered Porch*



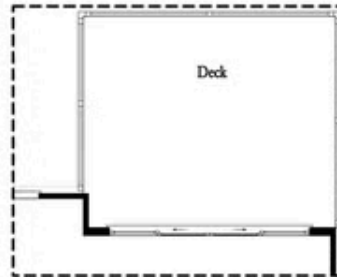
*Opt. Linear Fireplace*



*Opt. Fireplace*



*Opt. 8' Slider Door*



*Opt. 12' Slider*

OPTIONS  
FIRST FLOOR

Want to Know More  
About This Home?

CONTACT OUR COMMUNITY SALES MANAGER  
Call Us @ 470.248.2103