



PRICED FROM
\$564,900

 2,264 - 2,464 Sq Ft

 3 Beds

 3.5 Baths

 2 - 3 Car Garage

 2.0 Story

- Owner's Suite on the Main Level offering comfort and everyday convenience
- Gourmet Kitchen with Large Center Island overlooking the dining area and grand room
- Open Main Living Areas designed for entertaining and connection
- Main-Level Guest Bedroom ideal for visitors or multigenerational living
- Laundry Room on the Main Level for added convenience
- Upper-Level Bedroom and Office Space providing flexible living options
- Unfinished Attic Storage perfect for seasonal or long-term storage needs

• Optional Basement for expanded living or storage space

[Read More Online](#)

Available Elevations



Elevation A



Elevation B



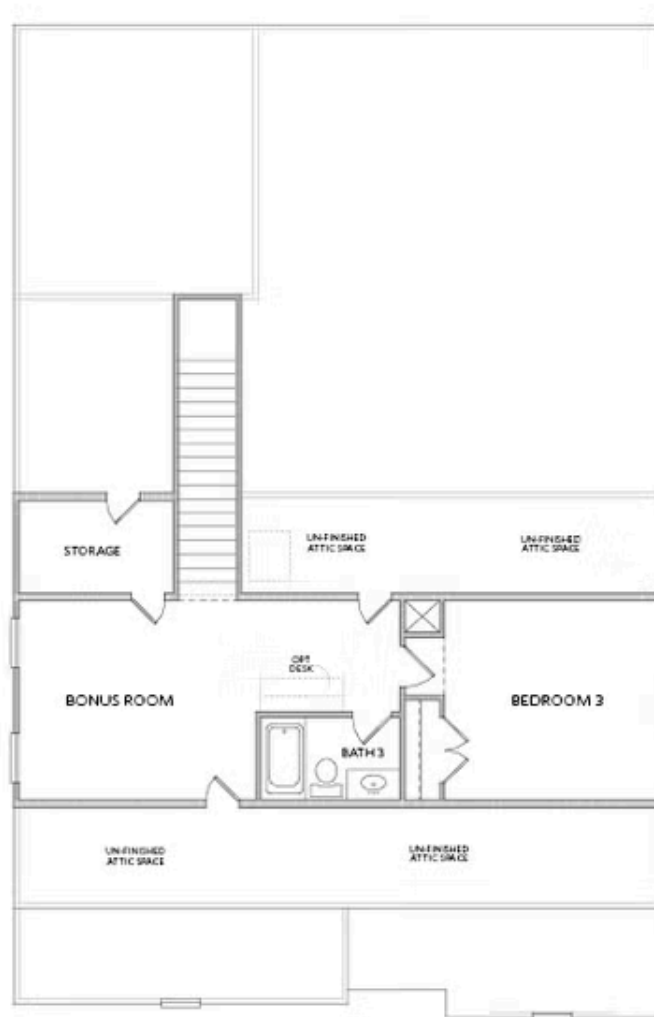
Elevation C



Elevation A

Want to Know More
About This Home?

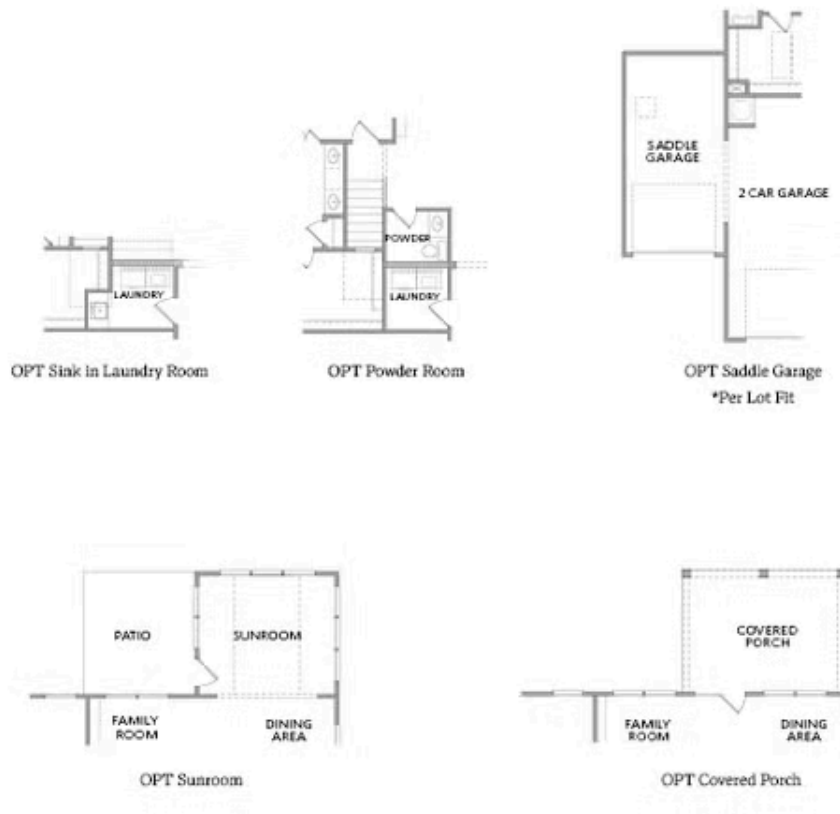
CONTACT OUR COMMUNITY SALES MANAGER
Call Us @ 470.955.0875



Elevation A

Want to Know More
About This Home?

CONTACT OUR COMMUNITY SALES MANAGER
Call Us @ 470.955.0875



Want to Know More
About This Home?

CONTACT OUR COMMUNITY SALES MANAGER
Call Us @ 470.955.0875