



PRICED FROM
\$542,900

 2,230 - 2,235 Sq Ft

 4 Beds

 3.5 Baths

 2 Car Garage

 2.0 Story

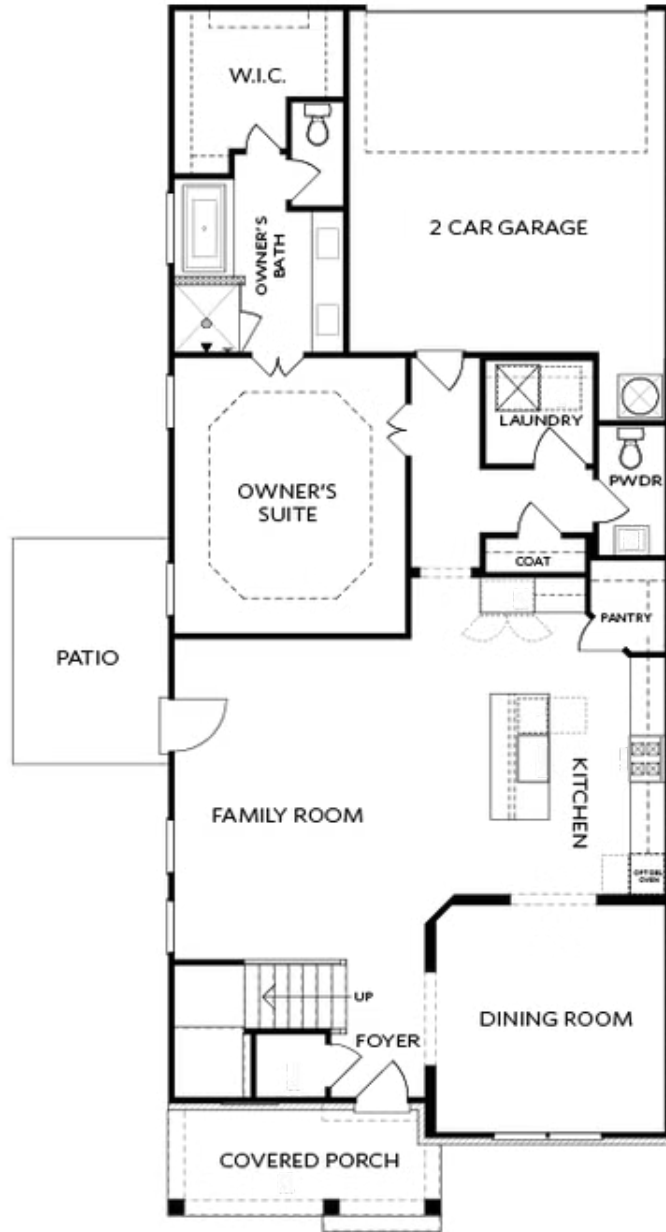
- Owner's Suite on the Main Level offering privacy and everyday convenience
- Separate Formal Dining Room ideal for entertaining and special gatherings
- Open Main-Level Layout with a spacious family room
- Family Room Access to Outdoor Living for seamless indoor-outdoor flow
- Gourmet Kitchen featuring a center island and walk-in pantry
- Three Secondary Bedrooms on the Upper Level providing flexible living space
- Upper-Level Full or Shared Bath depending on configuration
- Optional Fireplace available with or without built-in cabinetry

[Read More Online](#)

Available Elevations



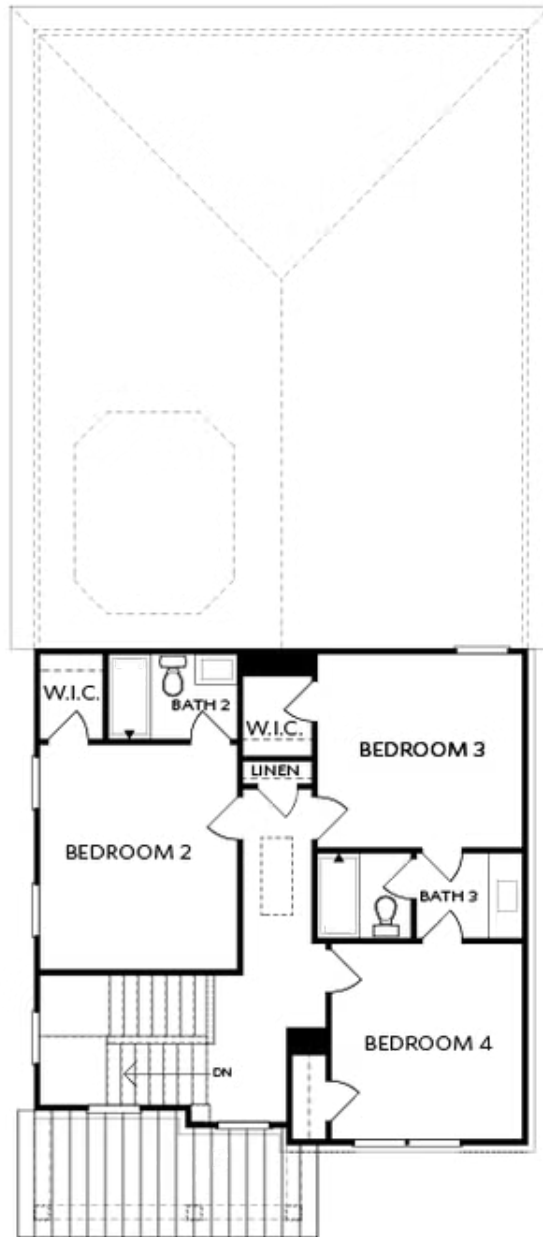
Elevation C



Elevation C

Want to Know More
About This Home?

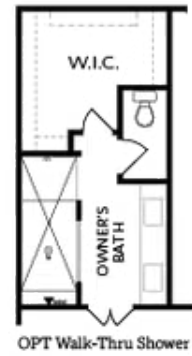
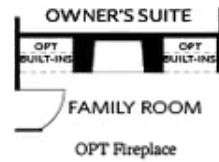
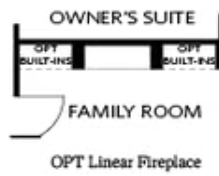
CONTACT OUR COMMUNITY SALES MANAGER
Call Us @ 470.955.0875



Elevation C

Want to Know More
About This Home?

CONTACT OUR COMMUNITY SALES MANAGER
Call Us @ 470.955.0875



Want to Know More
About This Home?

CONTACT OUR COMMUNITY SALES MANAGER
Call Us @ 470.955.0875