



PRICED FROM
\$546,900

 2,382 Sq Ft

 3 - 4 Beds

 3.5 Baths

 2 Car Garage

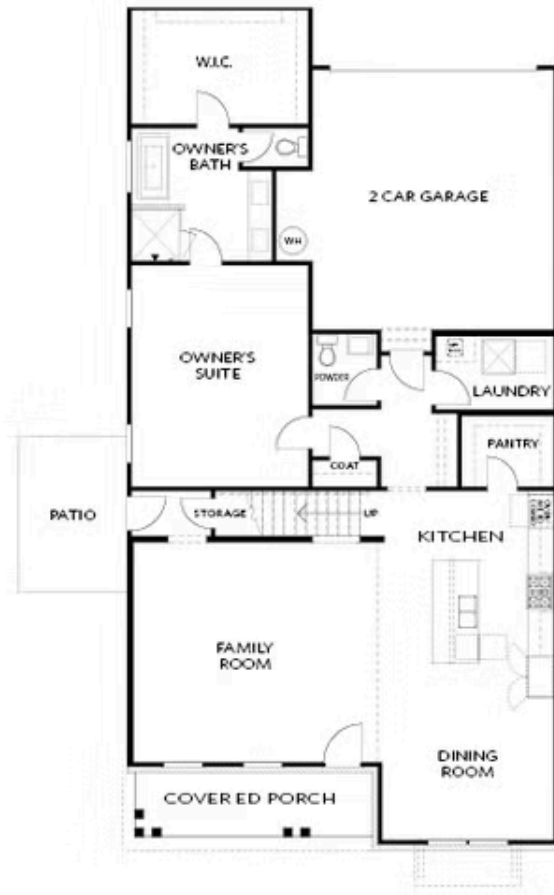
 2.0 Story

- Two-Story Home Design with an open, inviting main-level layout
- Gourmet Kitchen with Center Island overlooking the dining and family rooms
- Owner's Suite on the Main Level with dual vanities and a large walk-in shower
- Optional Owner's Bath Enhancements for added comfort and customization
- Light-Filled Family Room ideal for everyday living and entertaining
- Side Patio extending the living space outdoors
- Front Covered Porch creating a welcoming arrival experience
- Upper Level Secondary Bedrooms offering privacy and separation of spaces

[Read More Online](#)

Available Elevations





FIRST FLOOR

Elevation B

Want to Know More
About This Home?

CONTACT OUR COMMUNITY SALES MANAGER
Call Us @ 470.955.0875

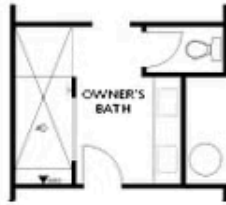


SECOND FLOOR

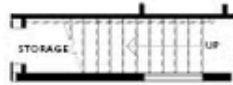
Elevation B

Want to Know More
About This Home?

CONTACT OUR COMMUNITY SALES MANAGER
Call Us @ 470.955.0875



OPT Walk-In Shower



OPT Open Rail



OPT Open Rail



OPT Side Windows



OPT Lenier Fireplace



OPT Fireplace



OPT BDR 4 ilo Loft

FIRST FLOOR

SECOND FLOOR

Elevation B

Want to Know More
 About This Home?

CONTACT OUR COMMUNITY SALES MANAGER
 Call Us @ 470.955.0875