




PRICED FROM
\$557,900

 2,568 - 2,704 Sq Ft

 4 Beds

 3.5 - 4 Baths

 2 Car Garage

 2.0 Story

- Spacious Two-Story Home Design with an open, light-filled main level
- Owner's Suite on the Main Level with a private bath featuring dual vanities and a large walk-in shower
- Gourmet Kitchen with Center Island overlooking the dining and family rooms
- Open Main-Level Living Areas designed for entertaining and everyday living
- Upper-Level Secondary Bedrooms offering privacy and flexibility
- Open Loft Area ideal for a media room, study space, or lounge
- Optional Second Owner's Suite in lieu of a secondary bedroom
- Side Patio plus a Rear Covered Patio for multiple outdoor living spaces

[Read More Online](#)

Available Elevations



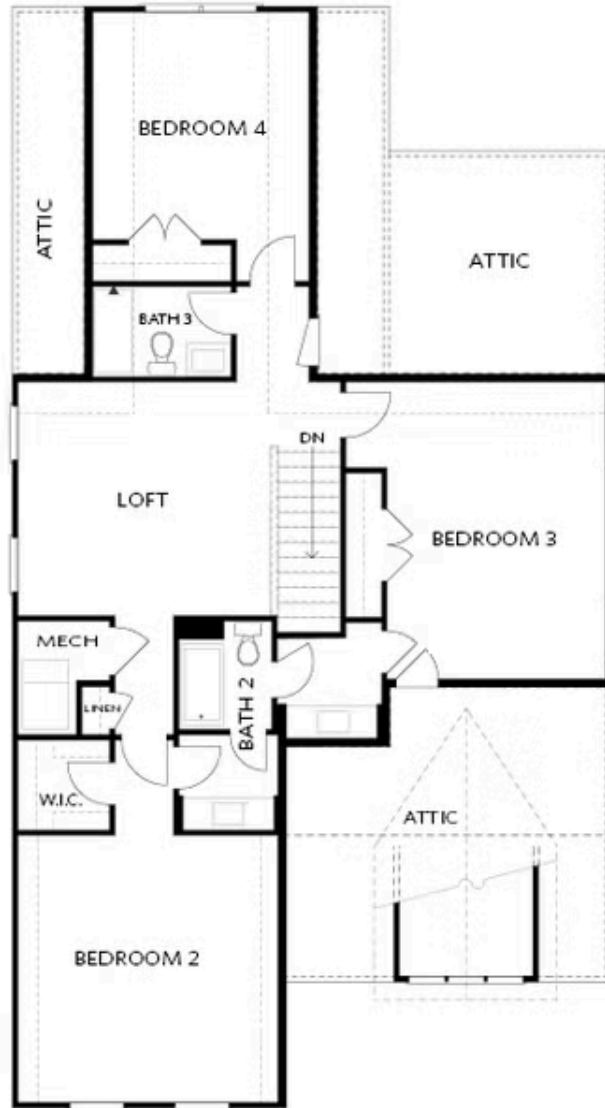


FIRST FLOOR

Elevation B

Want to Know More
About This Home?

CONTACT OUR COMMUNITY SALES MANAGER
Call Us @ 470.955.0875



Elevation B

Want to Know More
About This Home?

CONTACT OUR COMMUNITY SALES MANAGER
Call Us @ 470.955.0875



OPT Large Shower



OPT Screened Patio



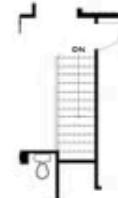
OPT 2nd Owner's Suite into BDR 3



OPT Linear Fireplace



OPT Fireplace



OPT Open Hand Rail

FIRST FLOOR

SECOND FLOOR

OPTIONS

Want to Know More
 About This Home?

CONTACT OUR COMMUNITY SALES MANAGER
 Call Us @ 470.955.0875