




PRICED FROM
\$579,900

 2,594 - 2,764 Sq Ft

 3 - 5 Beds

 2.5 - 3 Baths

 2 - 3 Car Garage

 2.0 Story

- Two-Story Home Design with an open, light-filled main level
- Gourmet Kitchen with Center Island overlooking the dining and family rooms
- Owner's Suite on the Main Level featuring dual vanities and an oversized walk-in closet
- Open Main-Level Living Areas ideal for entertaining and everyday living
- Upper-Level Secondary Bedrooms providing privacy and separation of space
- Open Loft Area offering flexible living or lounge space
- Front Porch and Rear Patio extending everyday living outdoors

[Read More Online](#)

Available Elevations



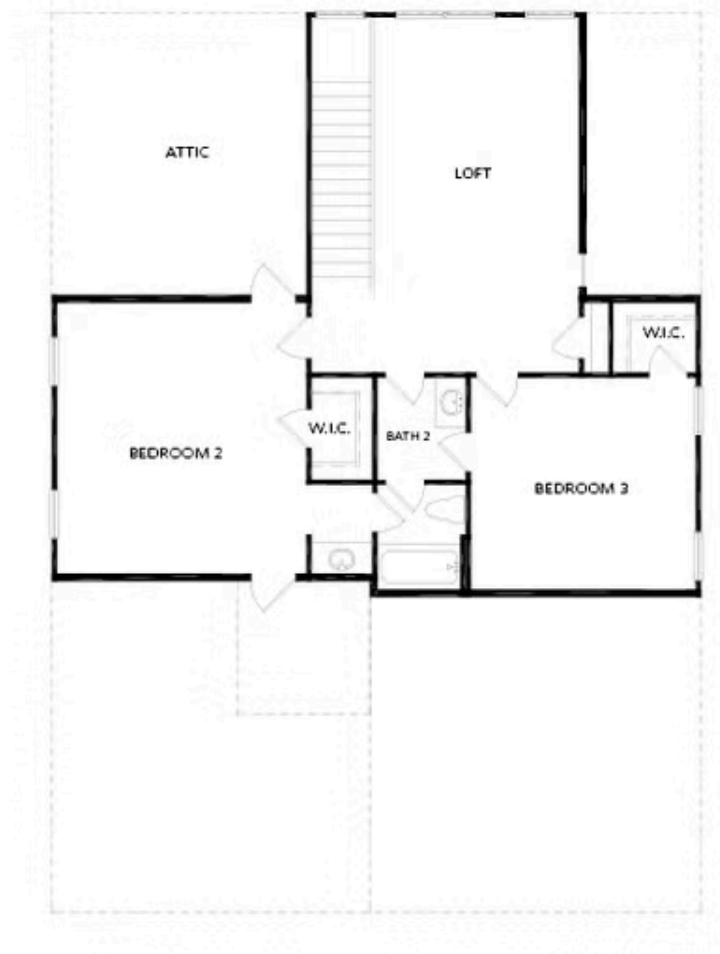
Please refer to actual blueprints for an accurate representation of home design. Home design and elevations subject to change without prior notice. Window, door and porch locations may vary by elevation. Subject to error, omission or withdrawal.



Elevation A

Want to Know More
About This Home?

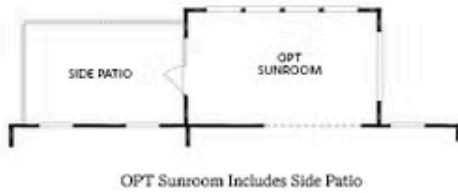
CONTACT OUR COMMUNITY SALES MANAGER
Call Us @ 470.955.0875



Elevation A

Want to Know More
About This Home?

CONTACT OUR COMMUNITY SALES MANAGER
Call Us @ 470.955.0875



*Only Available When OPT Sunroom Selected



OPT Owner's Walk-In Shower



OPT Butler's Pantry



OPT Bedroom 5 w/ Bath 3
 also Dining Room & Powder Room



OPT Fireplace

Want to Know More
 About This Home?

CONTACT OUR COMMUNITY SALES MANAGER
 Call Us @ 470.955.0875



Want to Know More
About This Home?

CONTACT OUR COMMUNITY SALES MANAGER
Call Us @ 470.955.0875