




PRICED FROM  
**\$628,900**

 3,059 - 3,431 Sq Ft

 3 - 4 Beds

 2.5 - 3 Baths

 2 Car Garage

 2.0 Story

- Spacious Main Level Layout with Gourmet Kitchen with Island Overlooking Family Room and Breakfast Room
- Formal Dining Room Open to Family Room and Kitchen
- Upper Level Retreat Ideal for Media Room or Secondary Family Room
- Large Owner's Bath With Private Vanities, Separate Soaking Tub and Shower
- Secondary Bedrooms Offer Shared Full Bath With Private Vanities

[Read More Online](#)

## Available Elevations



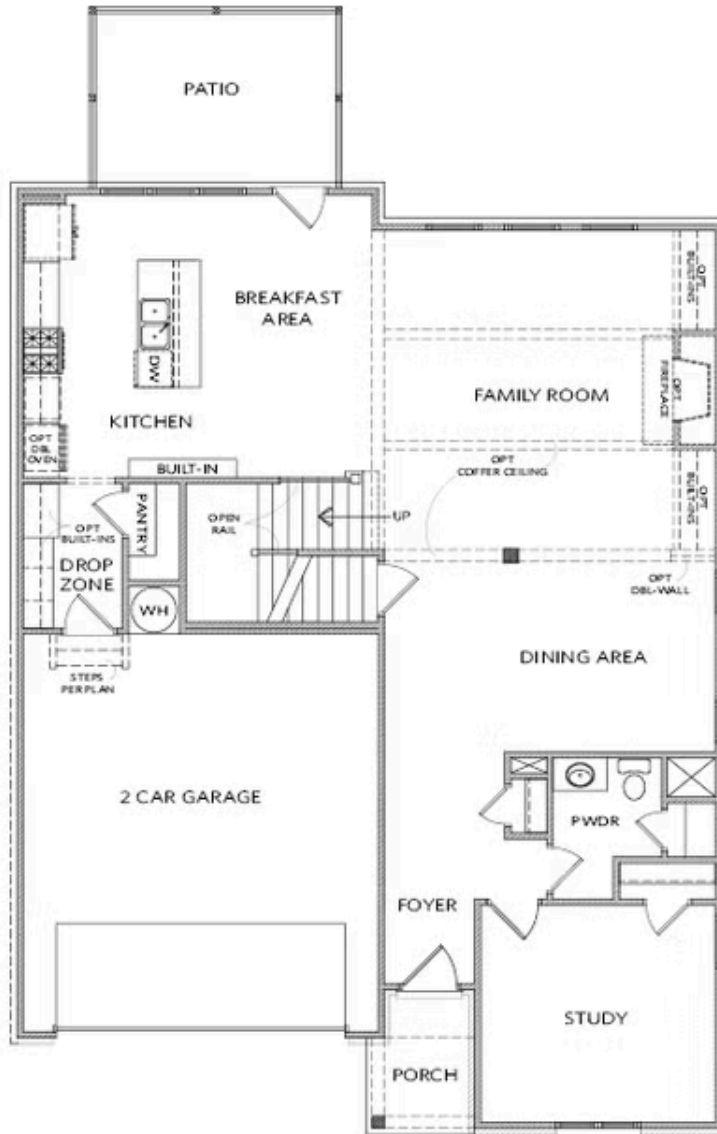
Elevation E



Elevation F



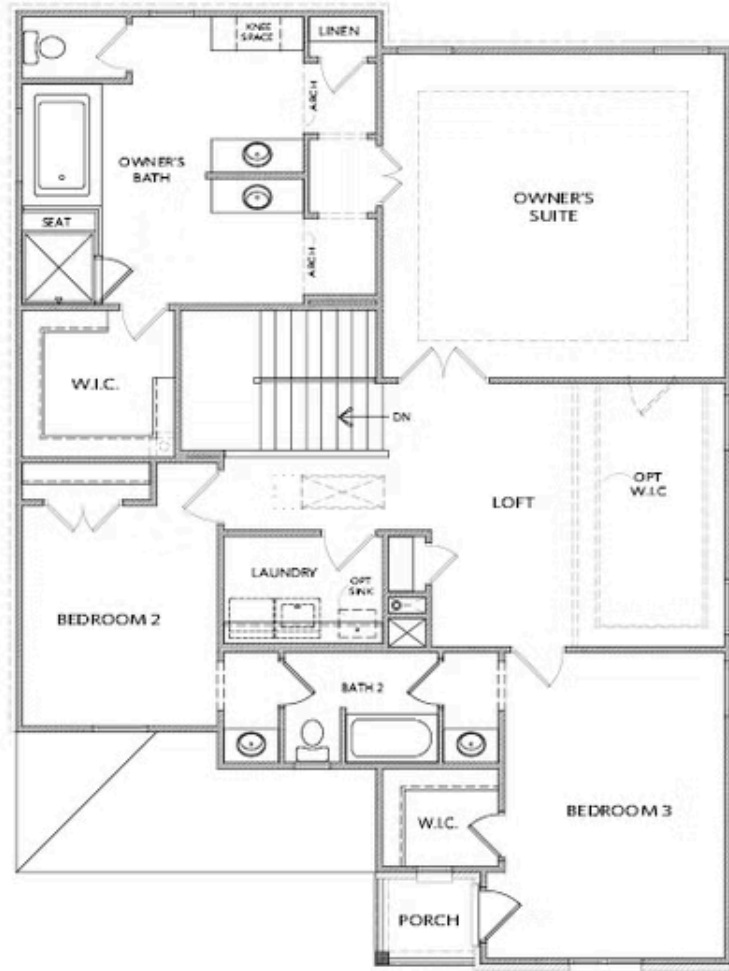
Elevation G



Elevation A

Want to Know More  
About This Home?

CONTACT OUR COMMUNITY SALES MANAGER  
Call Us @ 470.955.0875



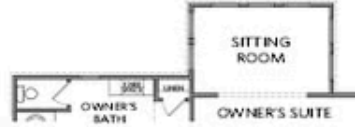
Elevation A

Want to Know More  
About This Home?

CONTACT OUR COMMUNITY SALES MANAGER  
Call Us @ 470.955.0875

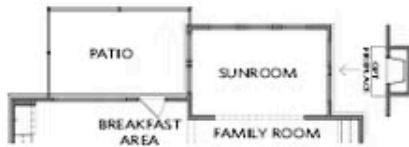


OPT Owner's Walk-In Shower



OPT Owner's Sitting Room

SECOND FLOOR



OPT Sunroom, OPT Fireplace on Sunroom



OPT Bedroom 4 & Bath 3  
 into Study & Powder Room



OPT Division Wall for Dining

FIRST FLOOR

Want to Know More  
 About This Home?

CONTACT OUR COMMUNITY SALES MANAGER  
 Call Us @ 470.955.0875



Elevations C-G

Want to Know More  
About This Home?

CONTACT OUR COMMUNITY SALES MANAGER  
Call Us @ 470.955.0875