




PRICED FROM
\$542,900

 1,961 - 2,583 Sq Ft

 2 - 4 Beds

 2.5 - 3.5 Baths

 2 Car Garage

 1.0 - 2.0 Story

- Ranch-Style Home Design offering comfort-focused, main-level living
- Owner's Suite on the Main Level with dual vanities, walk-in shower, and a spacious walk-in closet
- Direct Access to the Laundry Room from the owner's suite for everyday convenience
- Spacious Kitchen with island and pantry overlooking the dining and family rooms
- Open-Concept Main Living Areas ideal for gathering and entertaining
- Patio off the Family Room featuring both covered and uncovered outdoor living areas
- Secondary Bedroom & Full Bath located on the main level
- Office or Optional Third Bedroom on the main level for added flexibility

[Read More Online](#)

Available Elevations

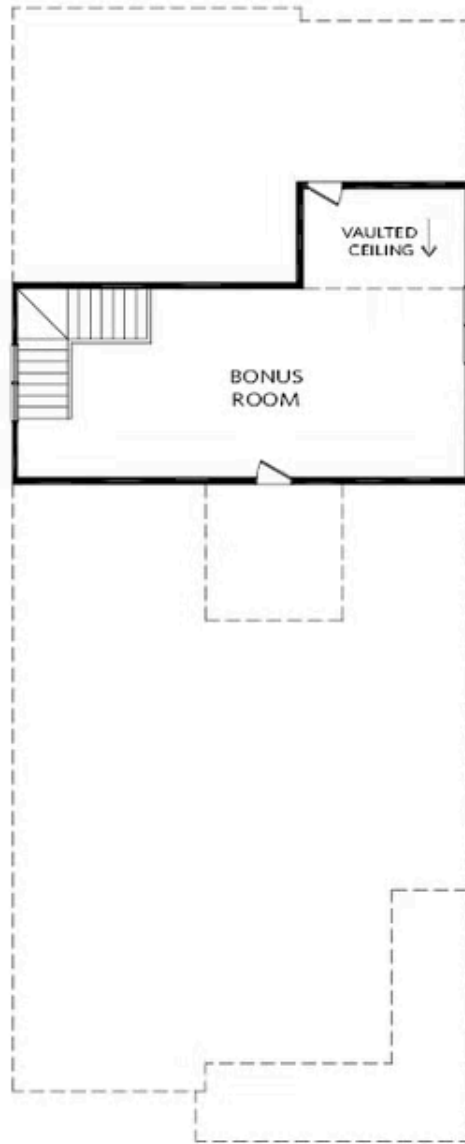




Elevation A

Want to Know More
 About This Home?

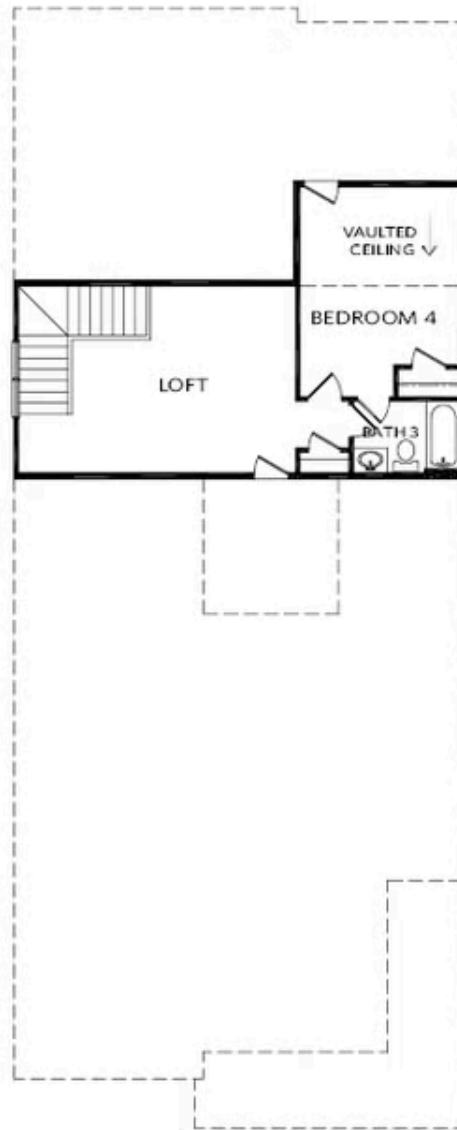
CONTACT OUR COMMUNITY SALES MANAGER
 Call Us @ 470.955.0875



OPT SECOND FLOOR
OPT Bonus Room Layout

Want to Know More
About This Home?

CONTACT OUR COMMUNITY SALES MANAGER
Call Us @ 470.955.0875



OPT SECOND FLOOR
OPT Bedroom 4 w. Full Bath 3 & Loft Layout

**Want to Know More
About This Home?**

CONTACT OUR COMMUNITY SALES MANAGER
Call Us @ 470.955.0875



Stair Layout IF OPT Second Floor



OPT Golf Cart Storage



OPT Bedroom 3 into Office



OPT Storage



OPT Extended Owner's W.I.C.



OPT Sliding Glass Door



OPT Owner's Walk-In Shower



OPT Owner's Separate Tub/Shower

Want to Know More
 About This Home?

CONTACT OUR COMMUNITY SALES MANAGER
 Call Us @ 470.955.0875