



PRICED AT
\$1,002,774

 **2575 Sq Ft**

 **3 Beds**

 **2.5 Baths**

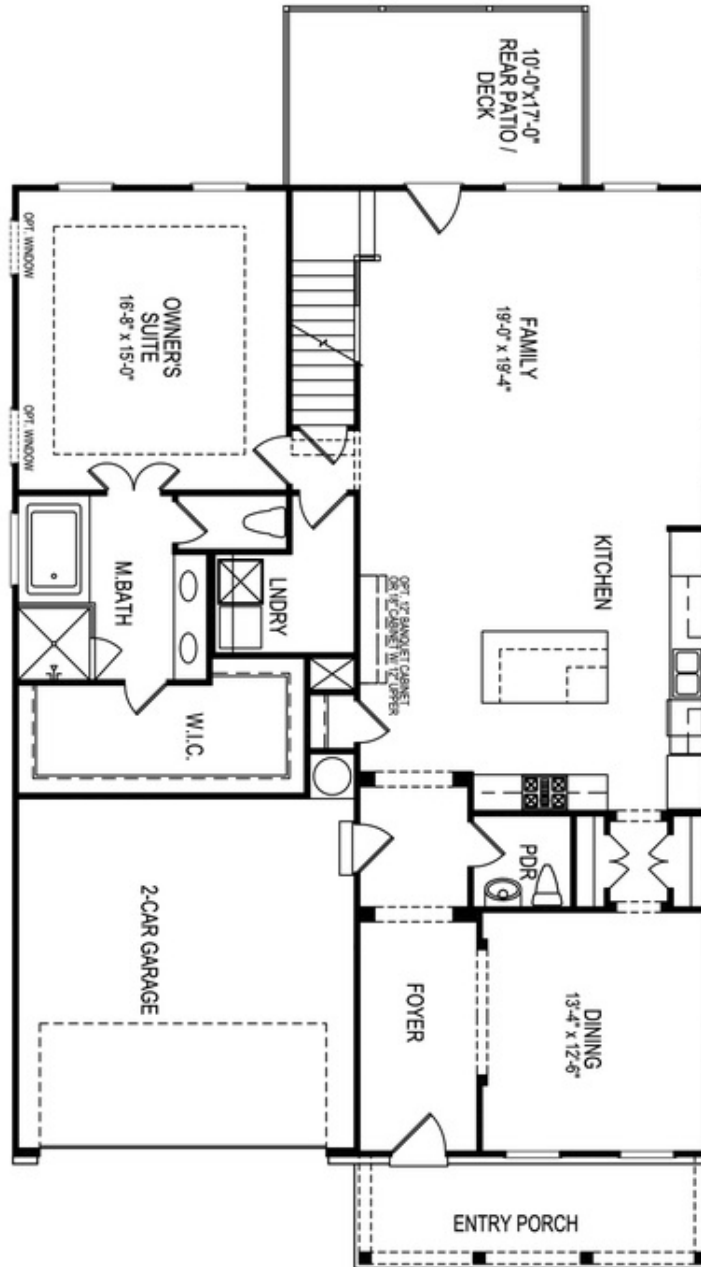
 **2 Car Garage**

 **2.0 Story**

The MADILYN. "SPRING INTO A NEW HOME?" Bring your buyers in today and they can still select all structural options and personal touches at our Design Studio! The Madilyn is one of the most popular floorplans in the Meadowview Collection. The Main level has a spacious open-concept kitchen, family room area, PRIMARY BEDROOM, laundry room, and separate dining room which can be converted to 2nd bedroom with a full bath on the Main level. The back of the home overlooks peaceful wooded views off the back deck. The second level has 2 secondary bedrooms with walk-in closets and a shared bathroom with a Loft space that is large enough to be converted to another bedroom. This home is built on a daylight/walkout unfinished basement that can add over 1500+ square feet once finished adding another full bedroom and bath. Perfect set up for visiting guests or for your kids/teens to enjoy. Features an open floorplan with hard surface flooring throughout main living areas and stairs, stone countertops, GE stainless steel appliances. Buyers can still add structural options to build their dream home! Located in the Award Winning Northview School District! Bellmoore Park offers HOA maintained lawns, onsite fitness center, 6 ...

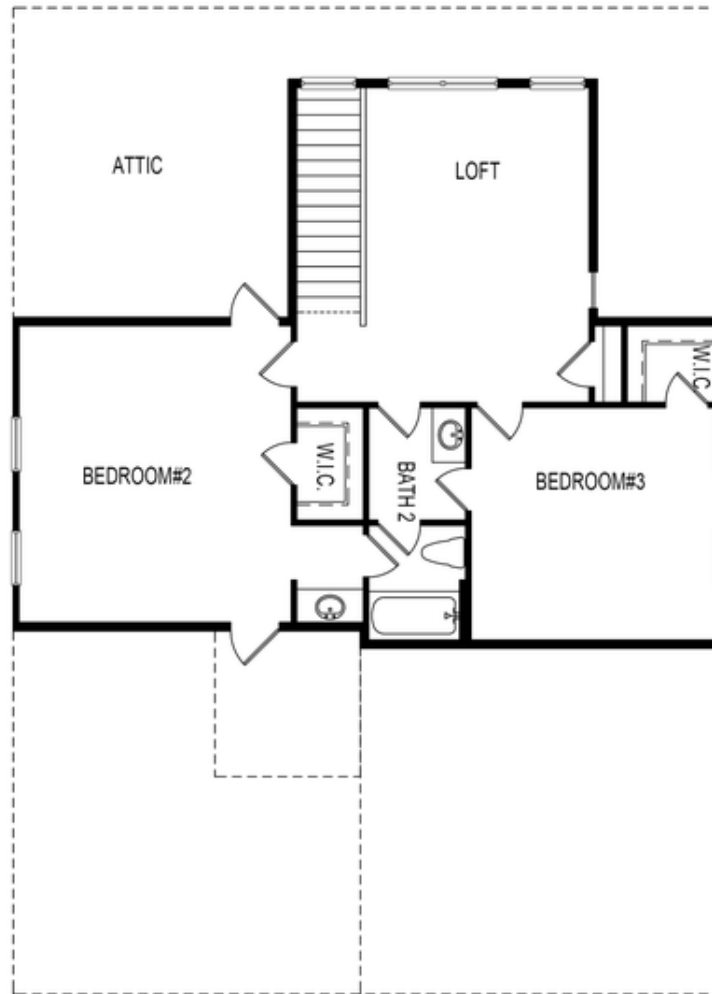
**Want to Know More
About This Home?**

CONTACT OUR COMMUNITY SALES MANAGER
Call Us @ 770.580.9300



Want to Know More
About This Home?

CONTACT OUR COMMUNITY SALES MANAGER
Call Us @ 770.580.9300

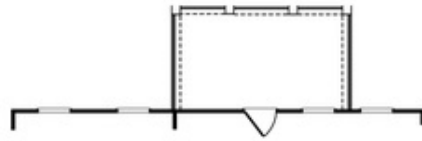


Second Floor

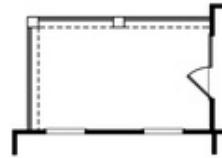
Want to Know More
About This Home?

CONTACT OUR COMMUNITY SALES MANAGER
Call Us @ 770.580.9300

Options



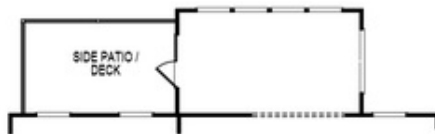
OPT Covered Patio/Deck



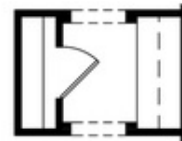
OPT Covered Side Patio/Deck



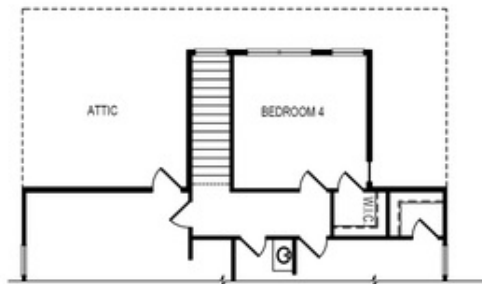
OPT Fireplace
 w. Opt Built-Ins



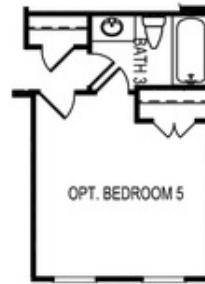
OPT Sunroom



OPT Butler's Pantry



OPT Bedroom 4 ilo Loft



OPT Bedroom 5
 ilo Dining Room



OPT Owner's
 Walk-In Shower

Want to Know More
 About This Home?

CONTACT OUR COMMUNITY SALES MANAGER
 Call Us @ 770.580.9300