



PRICED AT
\$1,089,300

 3607 Sq Ft

 6 Beds

 5.0 Baths

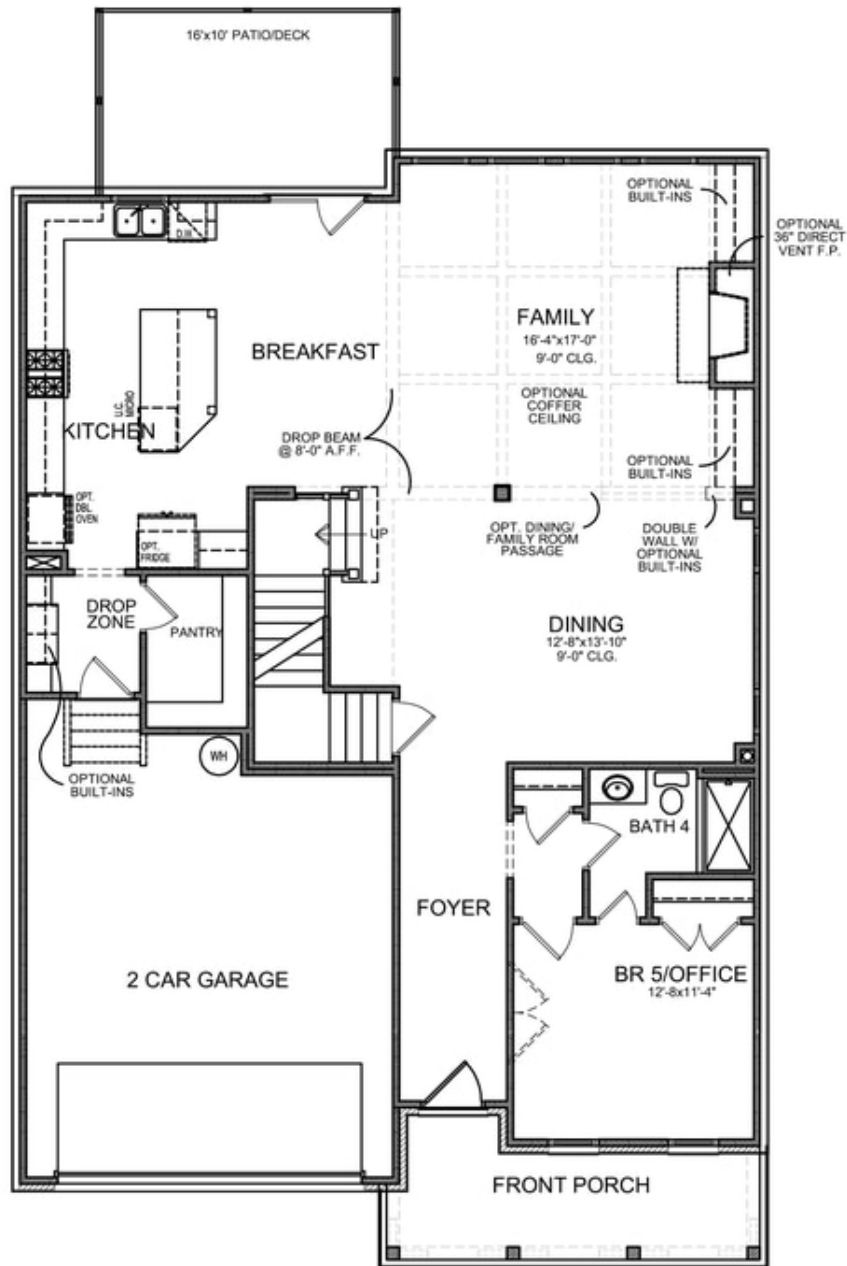
 2 Car Garage

 3.0 Story

The Montgomery F; "SPRING INTO A NEW HOME?" Come now or this one will be gone! HOME IS TO BE BUILT and is our MOST POPULAR plan in our current release. All structural options have already been selected in this plan, the only thing left to do is pick your design finishes to call this HOME! The Montgomery F elevation has a spacious FRONT PORCH and beautiful stone and siding exterior. THREE STORY HOME story home with structural options added to maximize use of space and design offering an expansive open-concept extended kitchen with oversized QUARTZ island and counterops, stainless steel appliances and open FAMILY room space that overlooks the backyard. There is plenty of room for entertaining and enjoying life! The first floor features 10 FOOT CEILINGS WITH 8 FOOT DOORS and ENLONGATED WINDOWS and a FULL BATH and Bedroom. On the second level, the Owners Retreat is one of the best features in the home, with a Spa-like bathroom design giving you both your own side of the bathroom (HIS and HERS) featuring beautiful vanities and an AMAZING Walk-in Closet, you just have to see for yourself! The 3rd FLOOR features a ENSUITE BEDROOM and BONUS room. ...

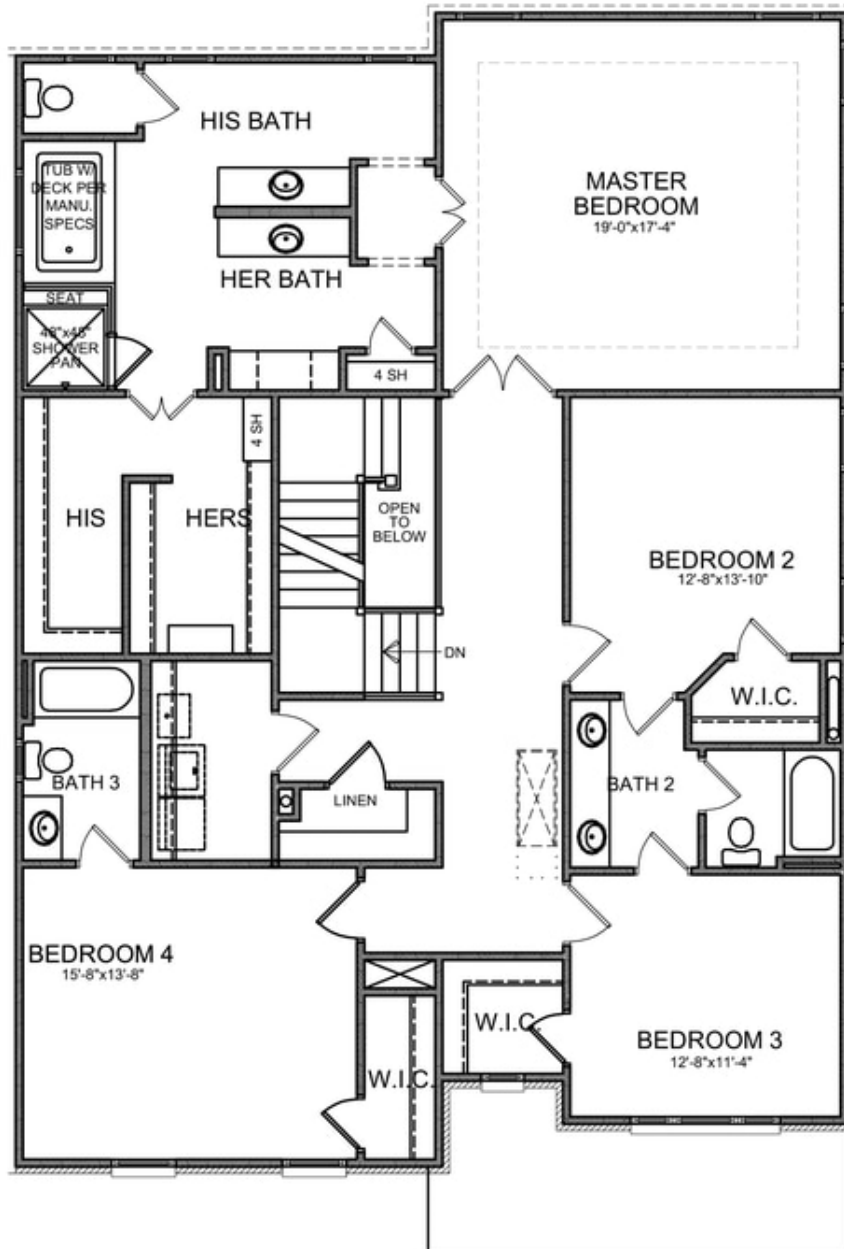
**Want to Know More
About This Home?**

CONTACT OUR COMMUNITY SALES MANAGER
Call Us @ 770.580.9300



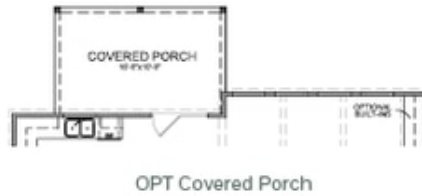
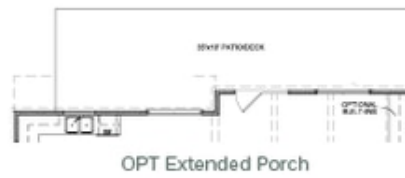
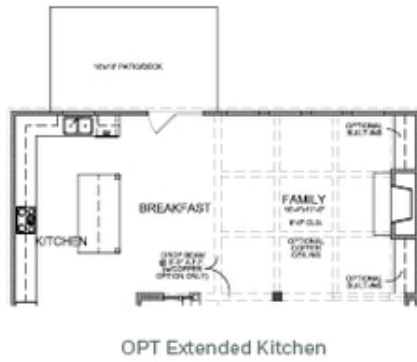
**Want to Know More
 About This Home?**

CONTACT OUR COMMUNITY SALES MANAGER
 Call Us @ 770.580.9300



**Want to Know More
About This Home?**

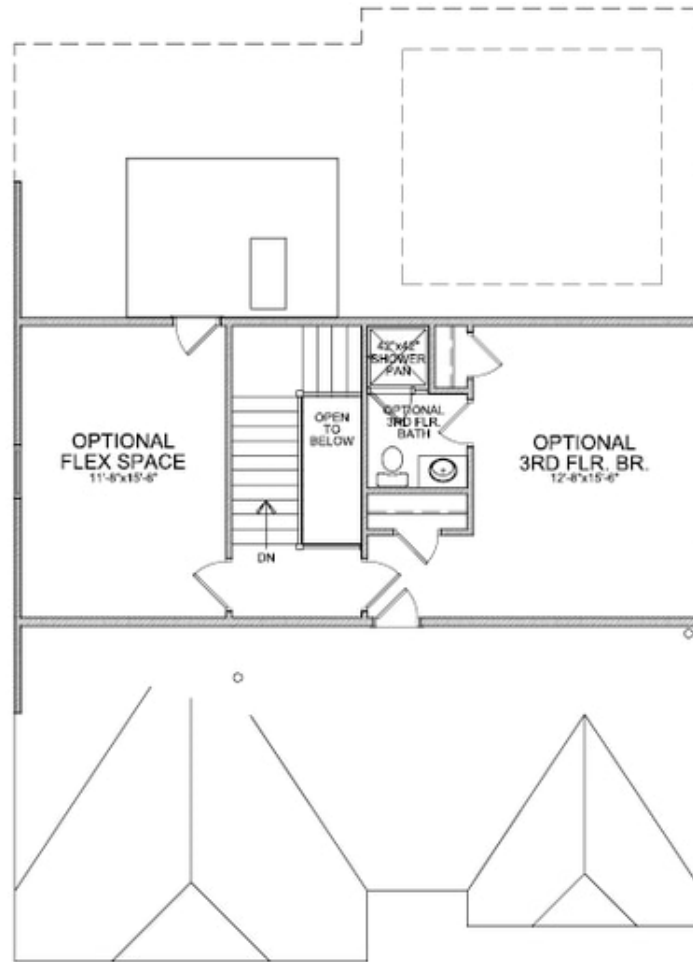
CONTACT OUR COMMUNITY SALES MANAGER
Call Us @ 770.580.9300



OPTIONS

**Want to Know More
 About This Home?**

CONTACT OUR COMMUNITY SALES MANAGER
 Call Us @ 770.580.9300



OPT Third Floor

*Third Floor NOT available on Elevations B & E

**Want to Know More
About This Home?**

CONTACT OUR COMMUNITY SALES MANAGER
Call Us @ 770.580.9300