



PRICED AT  
**\$812,425**

 **2360 Sq Ft**

 **4 Beds**

 **3.0 Baths**

 **2 Car Garage**

 **3.0 Story**

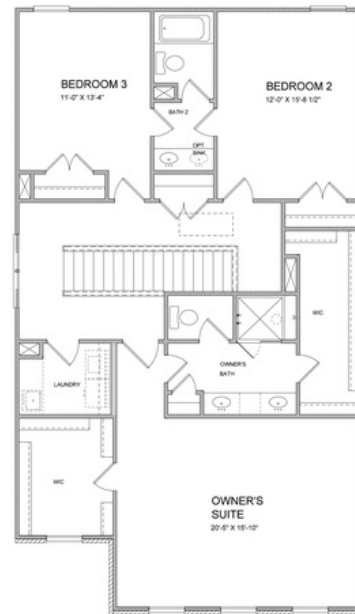
The Tensley C plan is just perfect for you.... "SPRING INTO A NEW HOME? " This home is located on a **CORNER LOT** and will start construction later this month. So don't miss out- This home is **TO BE BUILT-** Bring your buyers now and they can still select all the Design finishes in this home. The Tensley is one of the Courtyard style homes with a Rear-entry 2 car garage in the Meadowview Collection. This home has a total of **4 BEDROOMS 3 BATHROOMS** with an office space located on the second floor. **GUEST RETREAT-** full bathroom with walk in shower and bedroom is conveniently located on the first floor. Structural additions to the home include: **10-foot ceilings, 8-foot doors and elongated windows** that bring in tons of natural light on the main level. Open rail stair/hallway with a designated office space located on 2nd level which can also be used for extra storage. Upstairs Laundry room with upper and lower cabinets and utility sink. Rear entry 2 car garage has an electric car charger outlet to accommodate an electric car. Buyers can still add **ALL DESIGN SELECTIONS** and create their dream home! Bellmoore Park is an Award-winning Master plan ...

Want to Know More  
About This Home?

CONTACT OUR COMMUNITY SALES MANAGER  
Call Us @ 770.580.9300



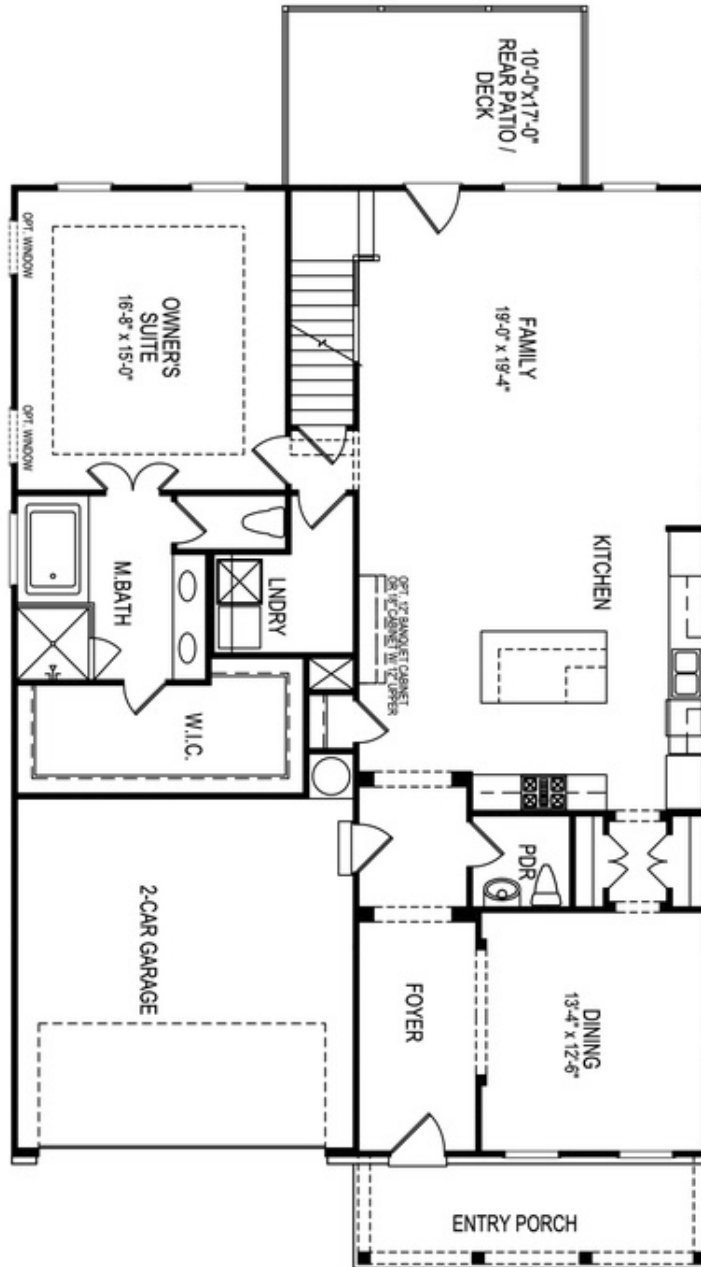
**First Floor**



**Second Floor**

Want to Know More  
 About This Home?

CONTACT OUR COMMUNITY SALES MANAGER  
 Call Us @ 770.580.9300



Want to Know More  
 About This Home?

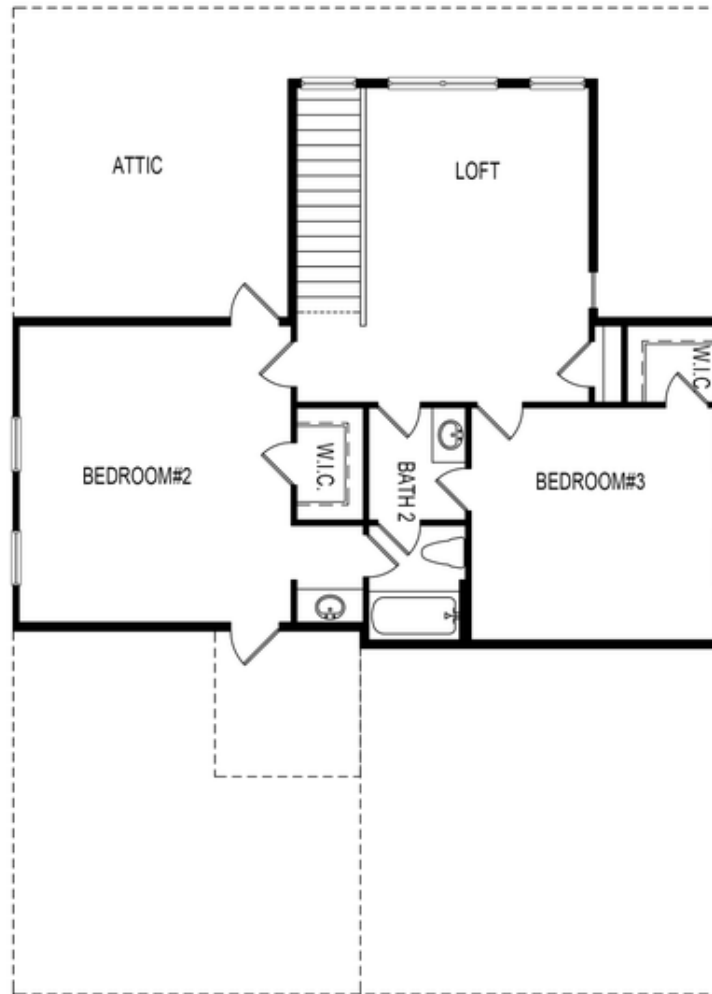
CONTACT OUR COMMUNITY SALES MANAGER  
 Call Us @ 770.580.9300



**Optional Third Floor**

**Want to Know More  
About This Home?**

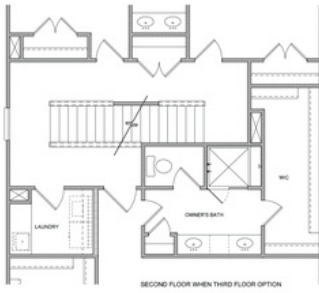
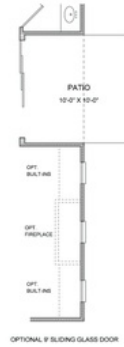
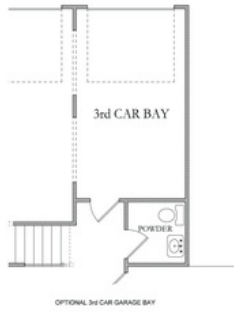
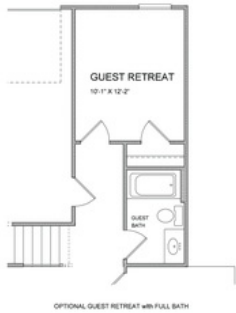
**CONTACT OUR COMMUNITY SALES MANAGER**  
**Call Us @ 770.580.9300**



Second Floor

Want to Know More  
About This Home?

CONTACT OUR COMMUNITY SALES MANAGER  
Call Us @ 770.580.9300

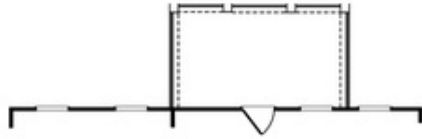


**All Options**

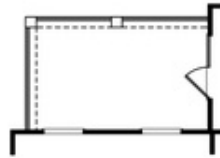
**Want to Know More  
 About This Home?**

**CONTACT OUR COMMUNITY SALES MANAGER**  
**Call Us @ 770.580.9300**

Options



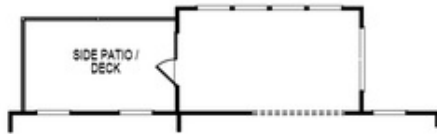
OPT Covered Patio/Deck



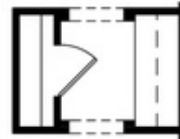
OPT Covered Side Patio/Deck



OPT Fireplace  
 w. Opt Built-Ins



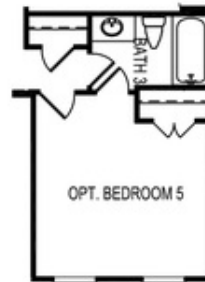
OPT Sunroom



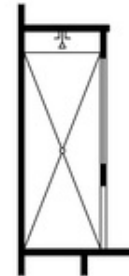
OPT Butler's Pantry



OPT Bedroom 4 ilo Loft



OPT Bedroom 5  
 ilo Dining Room



OPT Owner's  
 Walk-In Shower

Want to Know More  
 About This Home?

CONTACT OUR COMMUNITY SALES MANAGER  
 Call Us @ 770.580.9300