



PRICED AT
\$848,090

 2850 Sq Ft

 5 Beds

 4.0 Baths

 2 Car Garage

 2.0 Story

The Bennett C; 5 BDRMS & 4 FULL BATHS, ON NORTHEAST FACING HOMESITE!!! ELEVATE YOUR LIFE IN 2023 WITH A NEW HOME BY THE PROVIDENCE GROUP AND \$5,000 TOWARDS CLOSING. Guest Suite with Full bath on the Main Level, Study, Beautiful Open Kitchen, Sunroom and Family with TONS OF WINDOWS allows the Natural light to flood this home. Gorgeous designer kitchen has large island, farmhouse sink, quartz counter tops & large pantry. 10' Ceilings on the Main Level with 8' Doors, ALL Tiled Bathrooms, Large Walk in Closets. Hard Surface flooring on the main, guest suite, and loft area. So much more to come see... Upgrades galore! Schedule a tour today to see your incredible future at Bellmoore Park! ESTIMATED END OF JUNE- EARLY JULY COMPLETION **Photos and Virtual Tour are of a previously built Bennett floorplan** Bellmoore park is located near shopping, restaurants entertainment, and award-winning schools. Enjoy HOA maintained lawns, onsite fitness center, jr. olympic size pool and kiddie pool, 6 tennis courts, basketball court, splash pad, playground, clubhouse and a manned gate.

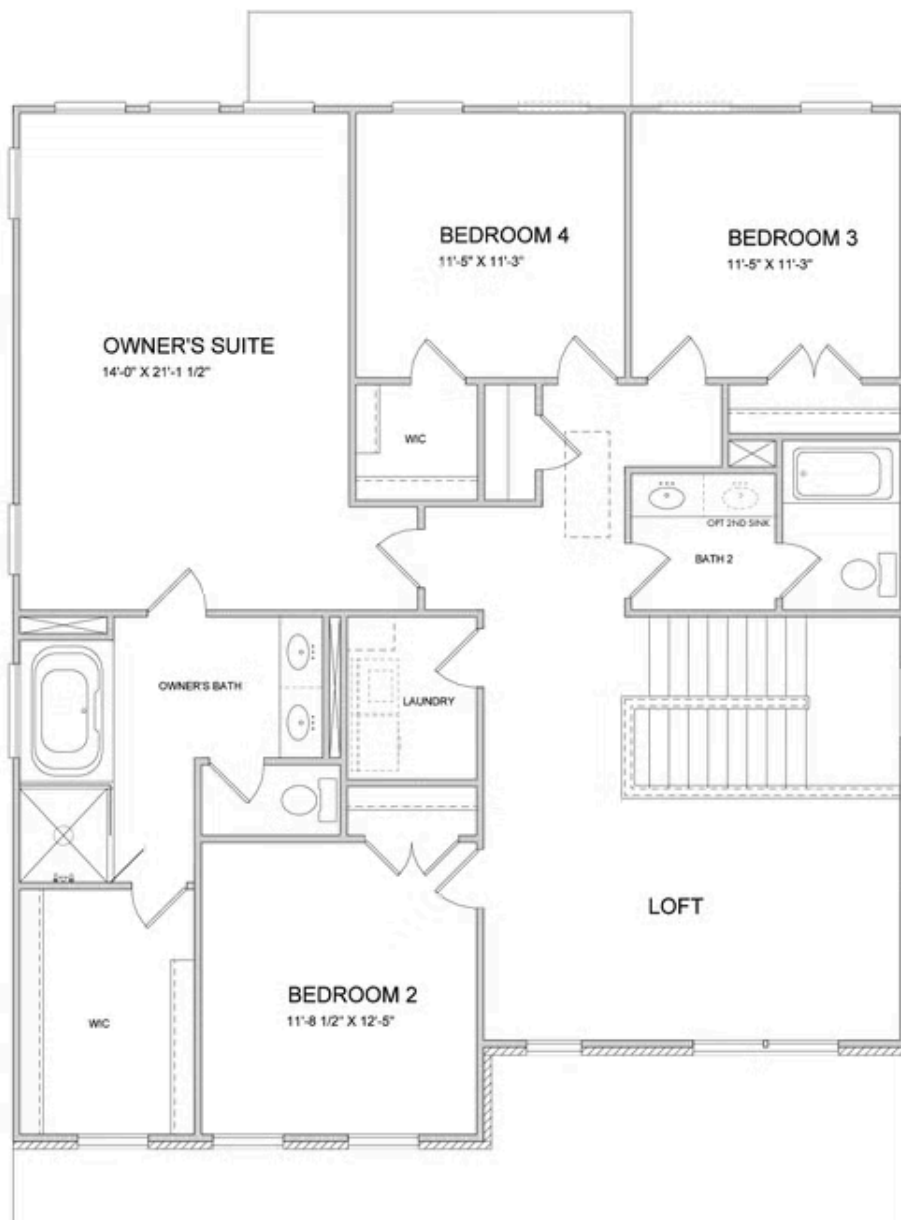
Want to Know More
About This Home?

CONTACT OUR COMMUNITY SALES MANAGER
Call Us @ 770.580.9300



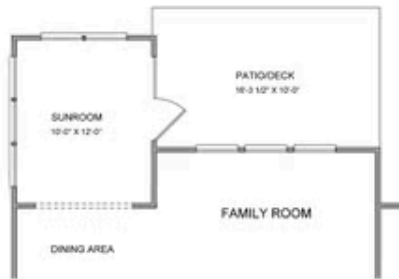
Want to Know More
About This Home?

CONTACT OUR COMMUNITY SALES MANAGER
Call Us @ 770.580.9300

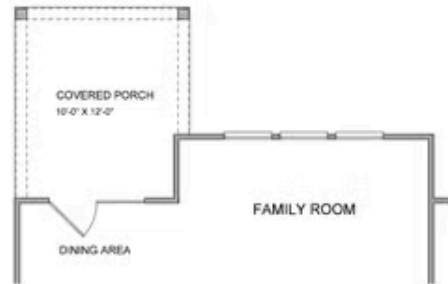


**Want to Know More
About This Home?**

CONTACT OUR COMMUNITY SALES MANAGER
Call Us @ 770.580.9300



Opt. Sunroom



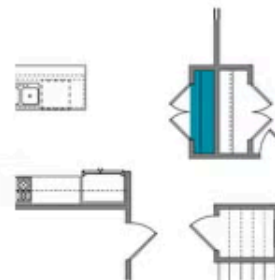
Opt. Covered Porch



Opt. Fireplace



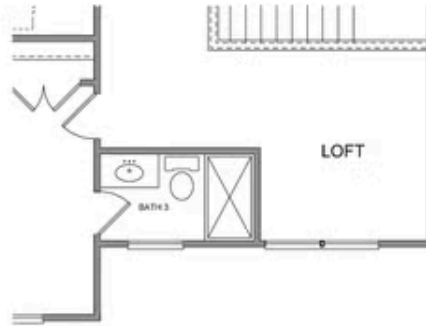
Opt. Rear Fireplace



Opt. Pantry

Want to Know More
About This Home?

CONTACT OUR COMMUNITY SALES MANAGER
Call Us @ 770.580.9300



Opt. 3rd Bath



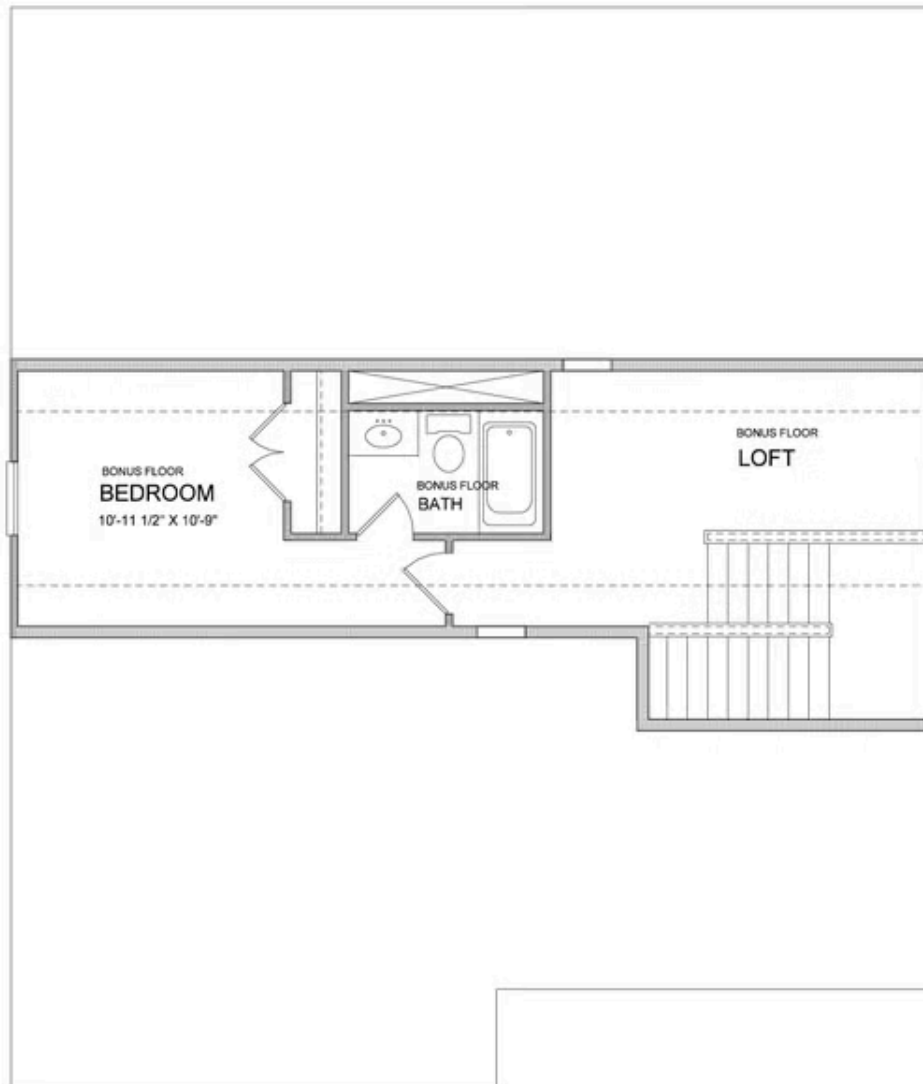
Opt. Owner's Sitting Room



Opt. Owner's Walk-in Shower

Want to Know More
About This Home?

CONTACT OUR COMMUNITY SALES MANAGER
Call Us @ 770.580.9300



Want to Know More
About This Home?

CONTACT OUR COMMUNITY SALES MANAGER
Call Us @ 770.580.9300