



PRICED AT
\$844,505

 **2676 Sq Ft**

 **5 Beds**

 **4.0 Baths**

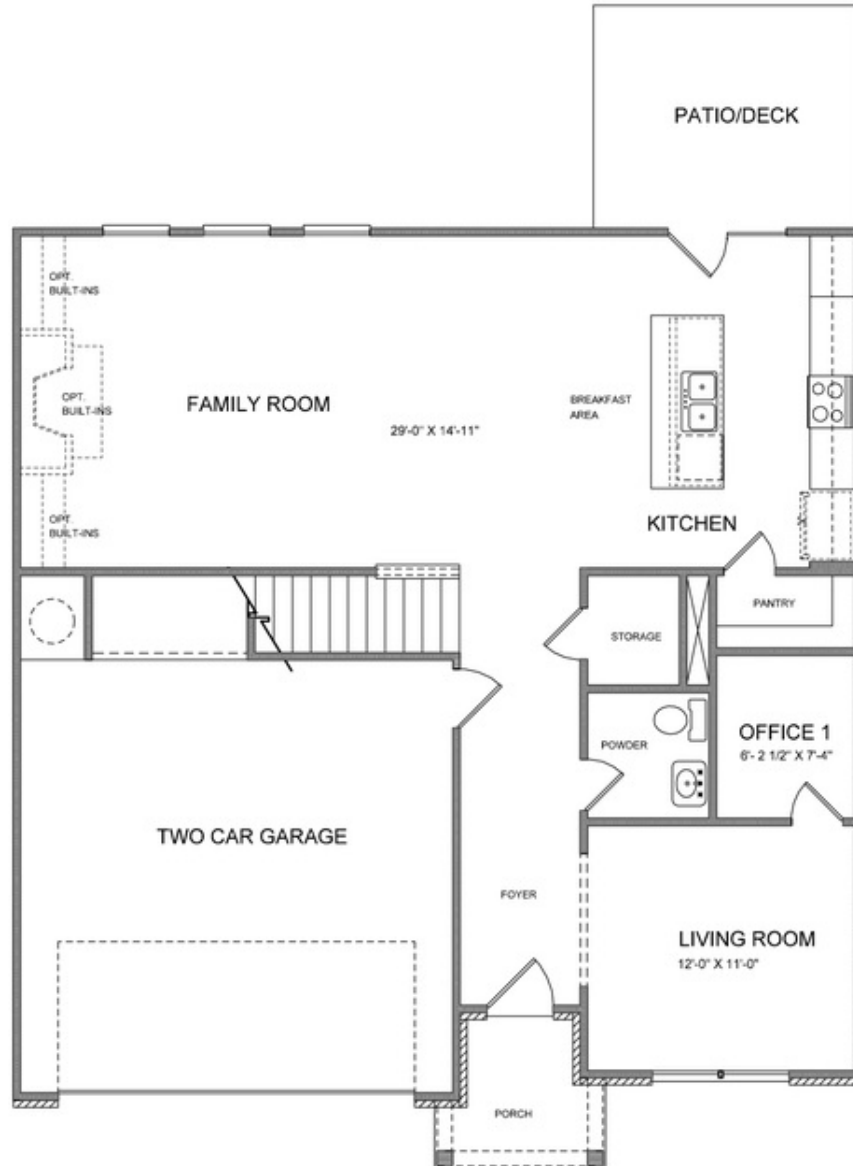
 **2 Car Garage**

 **2.0 Story**

The Wesley B; AWESOME 5 Bedroom 4 bath Home, with Guest Bedroom/Full Bath on the Main Level, Beautiful Open Kitchen, Sunroom and Family with Great Windows allowing in tons of natural light. NORTH EAST FACING saturates the home with natural light all day long! 10' Ceilings on the Main Level with 8' Doors, Wonderful Stone Counter Tops, Walk in Pantry, ALL Tiled Bathrooms, Large Walk in Closets... So much more to come see. Schedule a tour today to see your incredible future at Bellmoore Park! ELAVATE YOUR LIFE IN 2023 WITH A NEW HOME BY THE PROVIDENCE GROUP AND \$5,000 TOWARDS CLOSING COSTS (WITH A PREFERRED LENDER). Bellmoore park is located near shopping, restaurants entertainment, and award-winning schools. Enjoy HOA maintained lawns, onsite fitness center, jr. olympic size pool and kiddie pool, 6 tennis courts, basketball court, splash pad, playground, clubhouse and a manned gate.

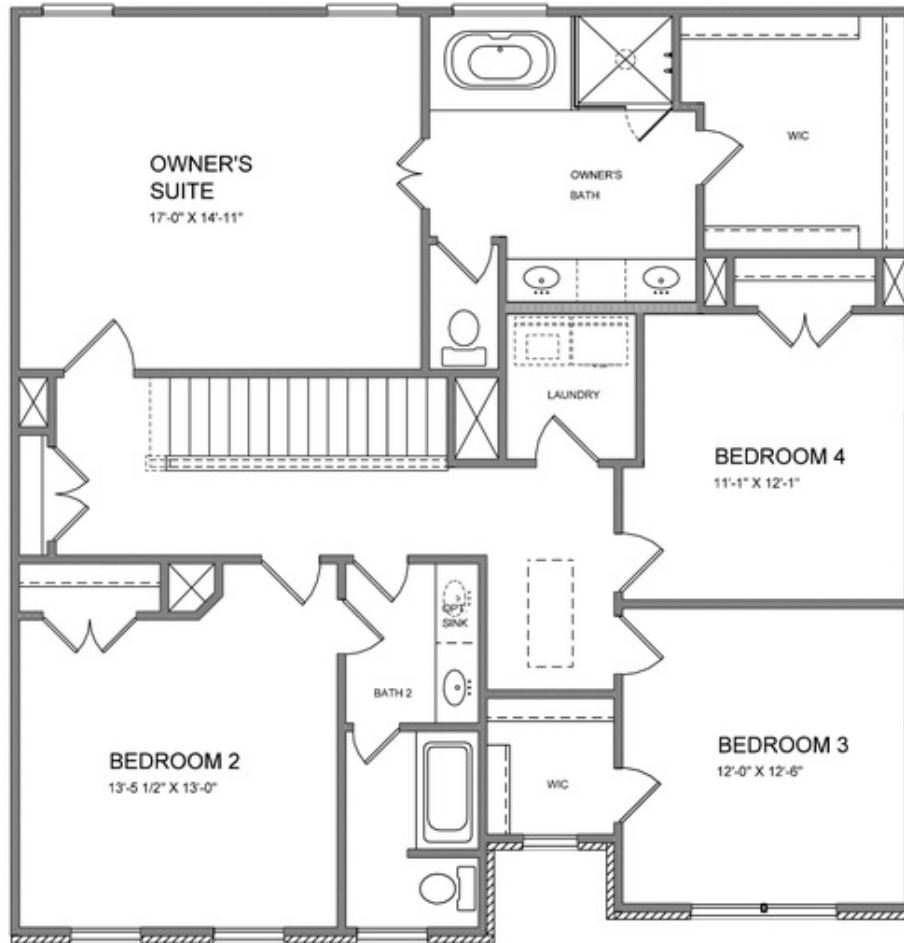
**Want to Know More
About This Home?**

**CONTACT OUR COMMUNITY SALES MANAGER
Call Us @ 770.580.9300**



Want to Know More
About This Home?

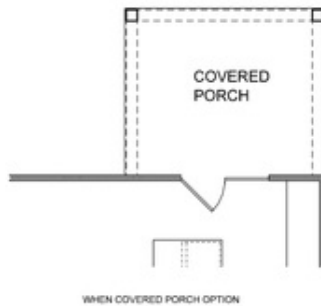
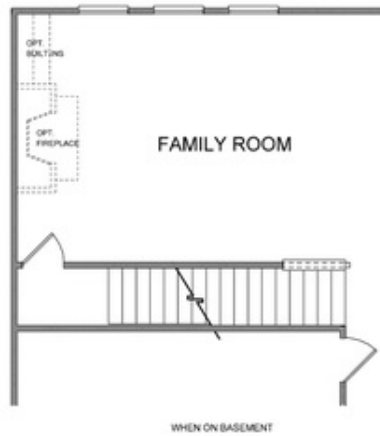
CONTACT OUR COMMUNITY SALES MANAGER
Call Us @ 770.580.9300



Want to Know More
About This Home?

CONTACT OUR COMMUNITY SALES MANAGER
Call Us @ 770.580.9300

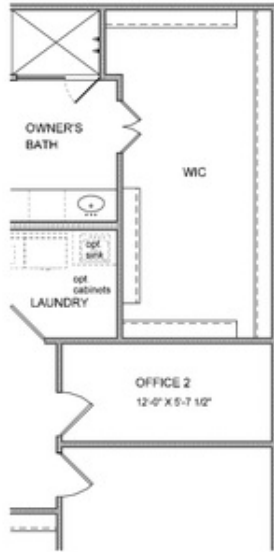
1st Floor Options



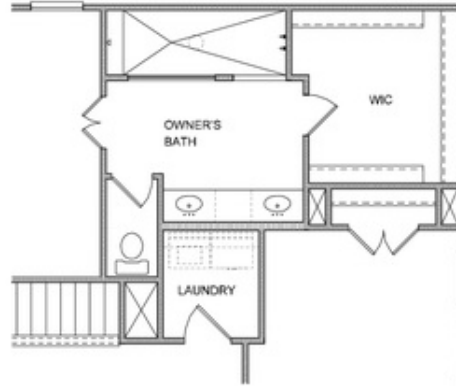
Want to Know More
About This Home?

CONTACT OUR COMMUNITY SALES MANAGER
Call Us @ 770.580.9300

2nd Floor Options



OPT OFFICE 2



OPT WALK-IN SHOWER



OPT BATH 3
 * Elevation B ONLY

Want to Know More
 About This Home?

CONTACT OUR COMMUNITY SALES MANAGER
 Call Us @ 770.580.9300