



PRICED AT
\$785,640

 2676 Sq Ft

 5 Beds

 3.0 Baths

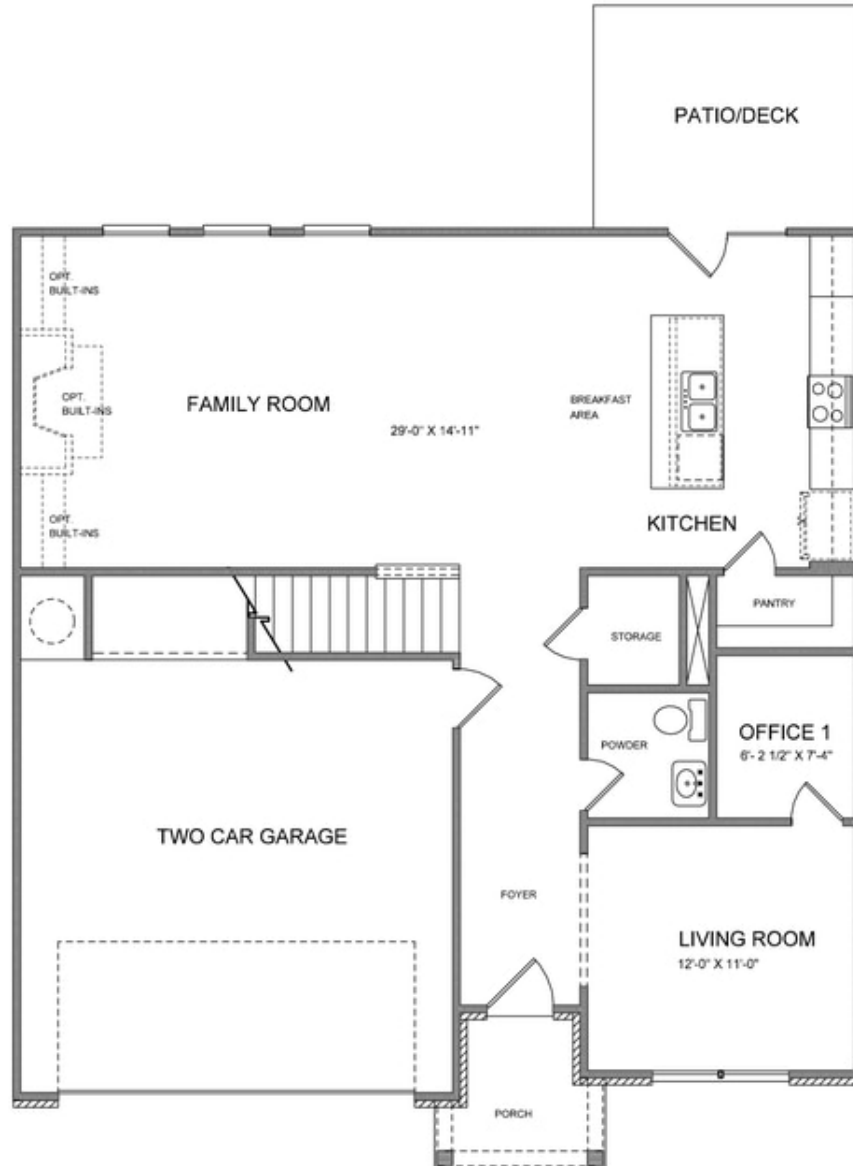
 2 Car Garage

 2.0 Story

LIMITED TIME!!! 4.875% 30-YR Fixed Rate with preferred lender on contracts written by Jan 31, 2023 and closed by Feb 28, 2023. Elevate your Life in 2023! The Wesley B; NORTHEAST SLAB HOME, FEBRUARY/MARCH COMPLETION!! Guest Suite with Full bath on the Main Level, Beautiful Open Kitchen, Sunroom and Family with TONS OF WINDOWS allows the Natural light to flood this home. North East Facing saturates the home with natural light all day long! 10' Ceilings on the Main Level with 8' Doors, Wonderful Stone Counter Tops, Walk in Pantry, ALL Tiled Bathrooms, Large Walk in Closets... So much more to come see. Schedule a tour today to see your incredible future at Bellmoore Park! Bellmoore park is located near shopping, restaurants entertainment, and award-winning schools. Enjoy HOA maintained lawns, onsite fitness center, jr. olympic size pool and kiddie pool, 6 tennis courts, basketball court, splash pad, playground, clubhouse and a manned gate. Home is currently under construction scheduled to be completed by the end of 2022.

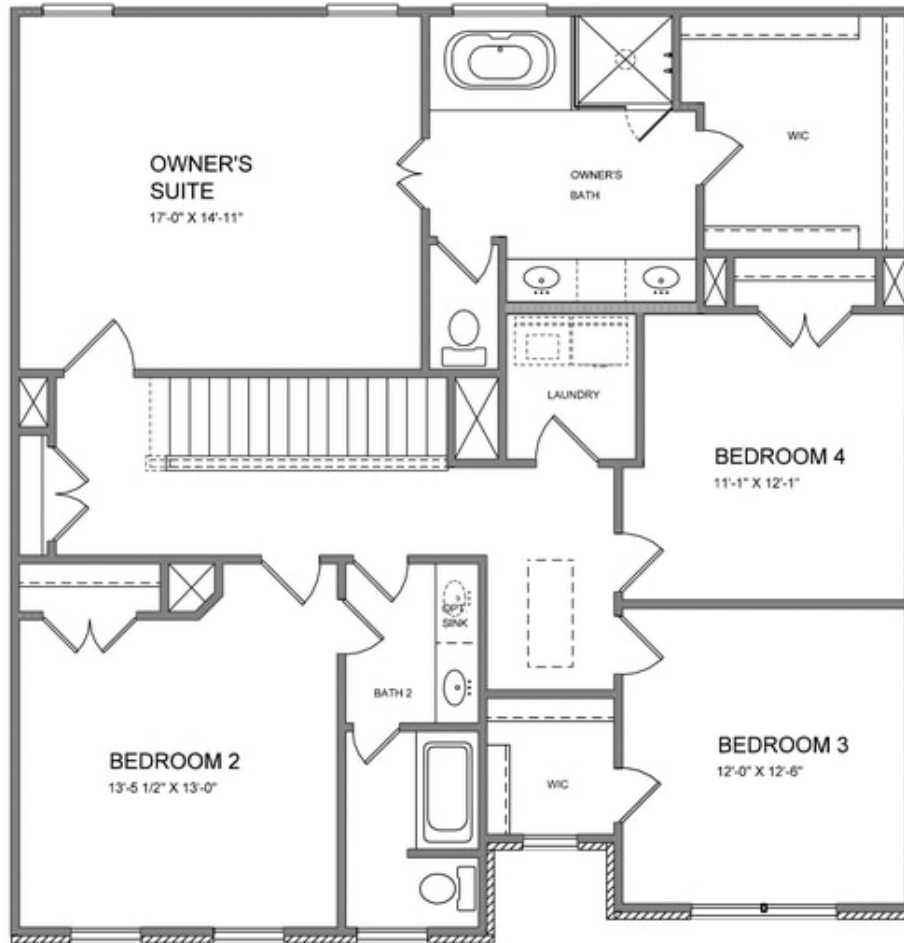
**Want to Know More
About This Home?**

CONTACT OUR COMMUNITY SALES MANAGER
Call Us @ 770.580.9300



**Want to Know More
About This Home?**

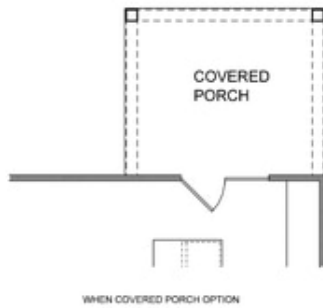
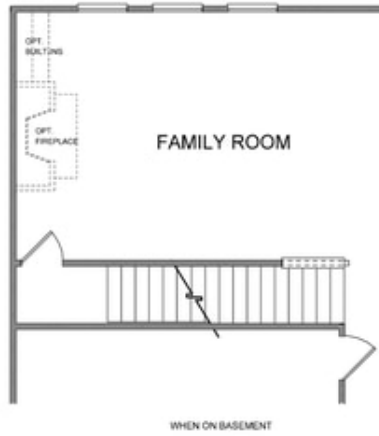
CONTACT OUR COMMUNITY SALES MANAGER
Call Us @ 770.580.9300



**Want to Know More
About This Home?**

CONTACT OUR COMMUNITY SALES MANAGER
Call Us @ 770.580.9300

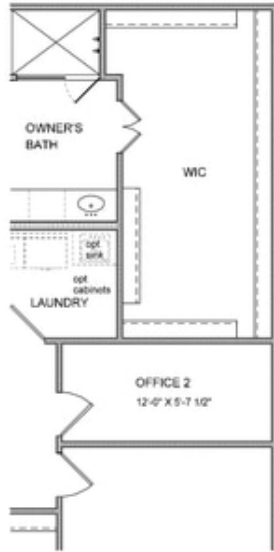
1st Floor Options



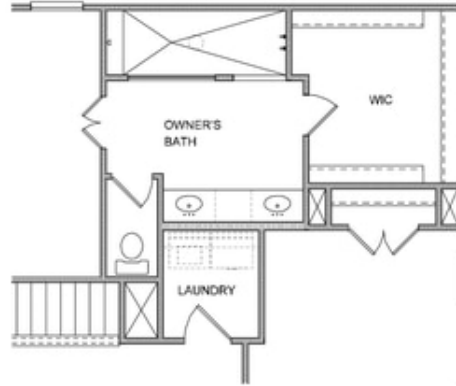
Want to Know More
About This Home?

CONTACT OUR COMMUNITY SALES MANAGER
Call Us @ 770.580.9300

2nd Floor Options



OPT OFFICE 2



OPT WALK-IN SHOWER



OPT BATH 3
 * Elevation B ONLY

**Want to Know More
 About This Home?**

CONTACT OUR COMMUNITY SALES MANAGER
 Call Us @ 770.580.9300