



PRICED AT
\$826,050

 3333 Sq Ft

 6 Beds

 5.0 Baths

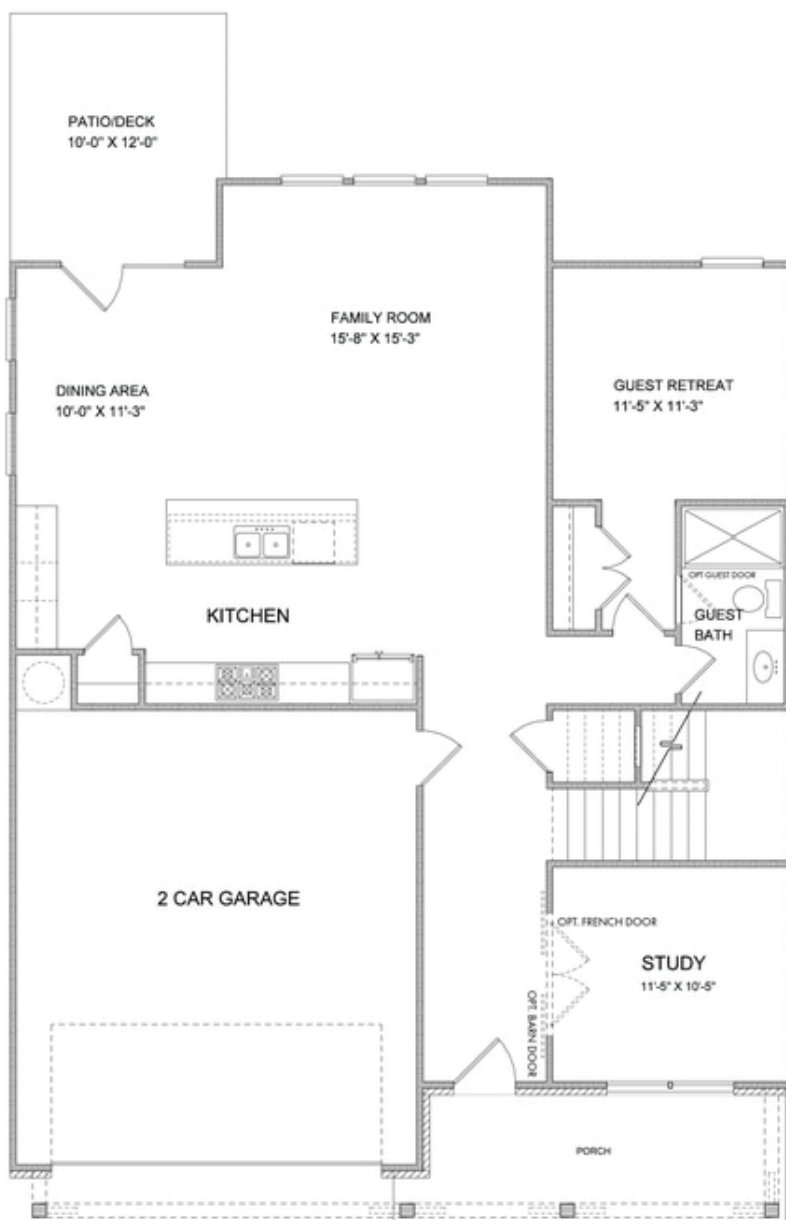
 2 Car Garage

 2.0 Story

The Bennett A; 6 BDRMS & 5 FULL BATHS, CORNER LOT, 3 FINISHED FLOORS!!! Guest Suite with Full bath on the Main Level, Study, Beautiful Open Kitchen, Sunroom and Family with TONS OF WINDOWS allows the Natural light to flood this home. 10' Ceilings on the Main Level with 8' Doors, Wonderful Stone Counter Tops, Walk in Pantry, ALL Tiled Bathrooms, Large Walk in Closets... So much more to come see. Schedule a tour today to see your incredible future at Bellmore Park! Bellmore park is located near shopping, restaurants entertainment, and award-winning schools. Enjoy HOA maintained lawns, onsite fitness center, jr. olympic size pool and kiddie pool, 6 tennis courts, basketball court, splash pad, playground, clubhouse and a manned gate.

**Want to Know More
About This Home?**

CONTACT OUR COMMUNITY SALES MANAGER
Call Us @ (770) 580-9300



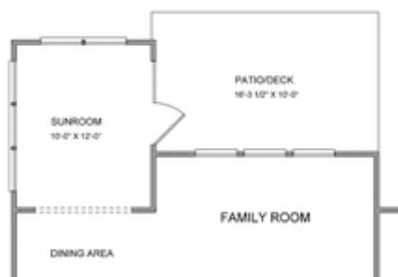
**Want to Know More
About This Home?**

CONTACT OUR COMMUNITY SALES MANAGER
Call Us @ (770) 580-9300

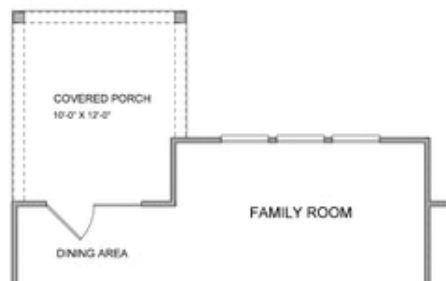


**Want to Know More
About This Home?**

CONTACT OUR COMMUNITY SALES MANAGER
Call Us @ (770) 580-9300



Opt. Sunroom



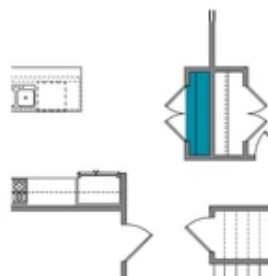
Opt. Covered Porch



Opt. Fireplace



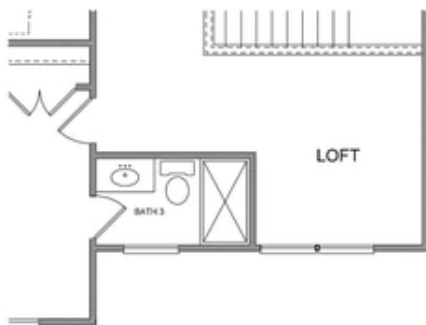
Opt. Rear Fireplace



Opt. Pantry

**Want to Know More
About This Home?**

CONTACT OUR COMMUNITY SALES MANAGER
Call Us @ (770) 580-9300



Opt. 3rd Bath



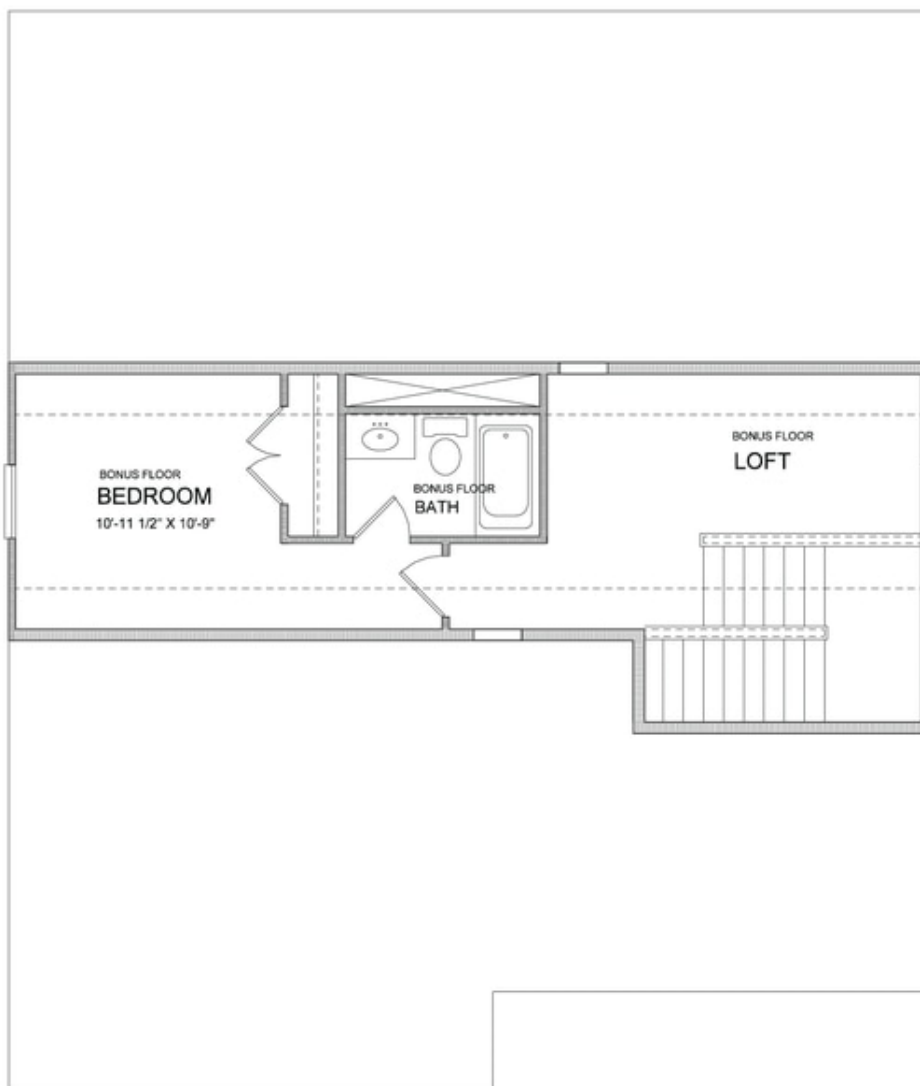
Opt. Owner's Sitting Room



Opt. Owner's Walk-in Shower

Want to Know More
About This Home?

CONTACT OUR COMMUNITY SALES MANAGER
Call Us @ (770) 580-9300



**Want to Know More
About This Home?**

CONTACT OUR COMMUNITY SALES MANAGER
Call Us @ (770) 580-9300