



PRICED AT
\$878,085

 **2676 Sq Ft**

 **5 Beds**

 **3.0 Baths**

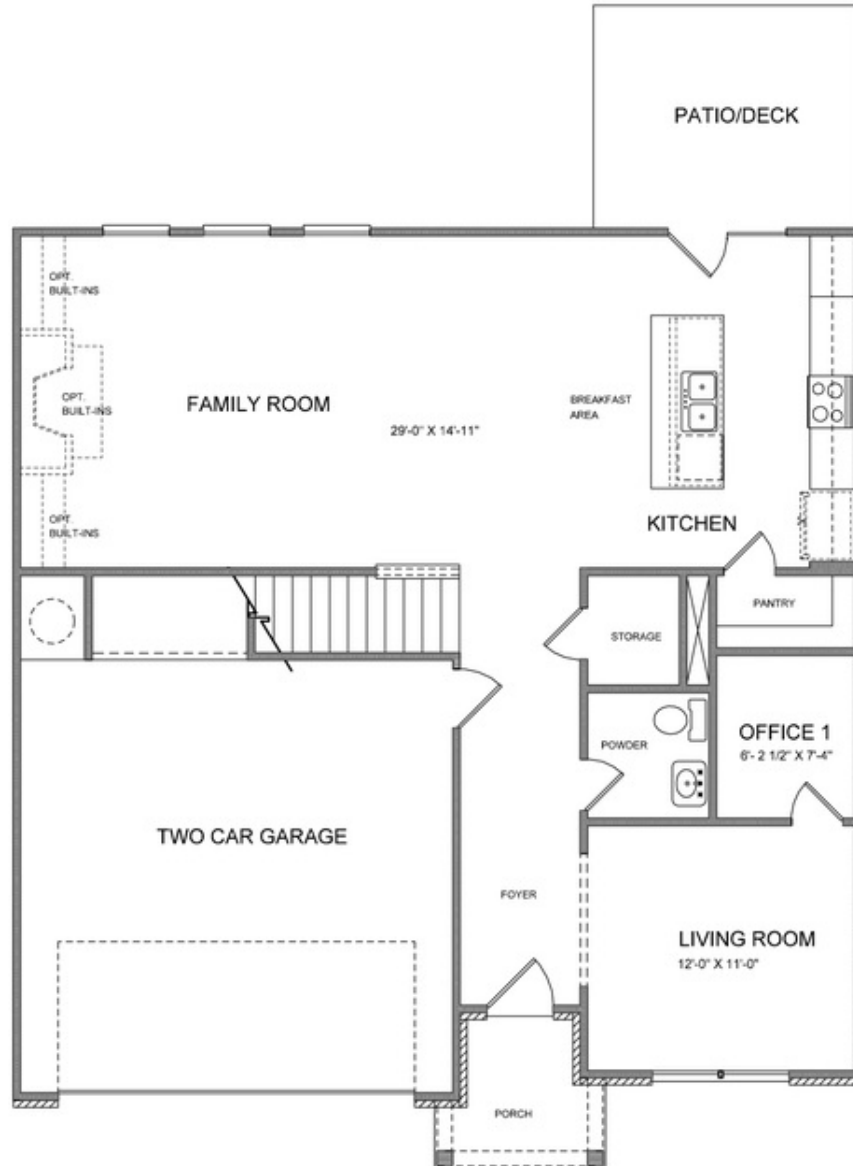
 **2 Car Garage**

 **2.0 Story**

LIMITED TIME!!! SPRING INTO SAVINGS WITH \$10K TOWARDS CLOSING COST!!! Offer only available on contracts written and accepted by April 30, 2023 when financing with one of Seller's 4 preferred lenders. The Wesley B; AWESOME BASEMENT HOME WITH FLAT BACK YARD IS MOVE IN READY!! Guest Suite with Full bath on the Main Level, Beautiful Open Kitchen, Sunroom and Family with TONS OF WINDOWS allows the Natural light to flood this home. North East Facing saturates the home with natural light all day long! 10' Ceilings on the Main Level with 8' Doors, Wonderful Stone Counter Tops, Walk in Pantry, ALL Tiled Bathrooms, Large Walk in Closets... So much more to come see. Schedule a tour today to see your incredible future at Bellmoore Park! Bellmoore park is located near shopping, restaurants entertainment, and award-winning schools. Enjoy HOA maintained lawns, onsite fitness center, jr. olympic size pool and kiddie pool, 6 tennis courts, basketball court, splash pad, playground, clubhouse and a manned gate.

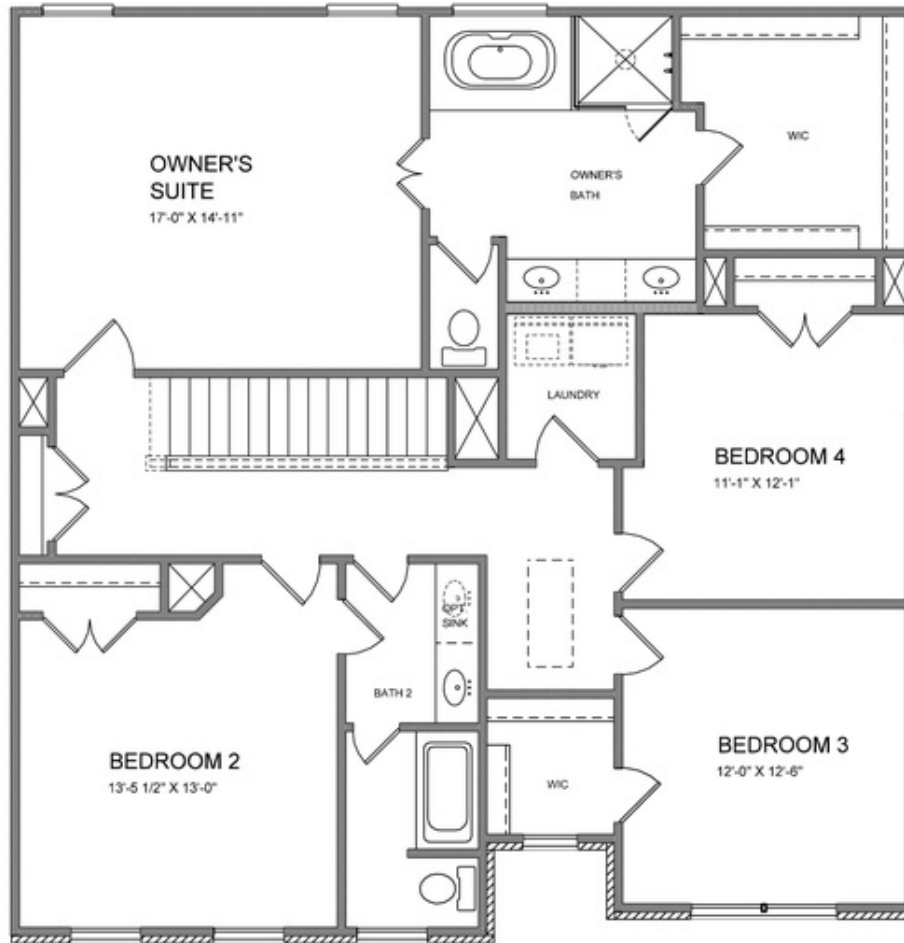
**Want to Know More
About This Home?**

**CONTACT OUR COMMUNITY SALES MANAGER
Call Us @ 770.580.9300**



Want to Know More
About This Home?

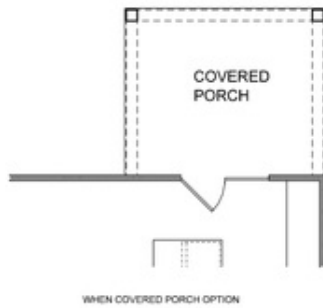
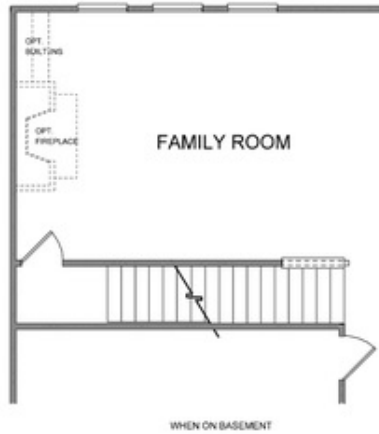
CONTACT OUR COMMUNITY SALES MANAGER
Call Us @ 770.580.9300



Want to Know More
About This Home?

CONTACT OUR COMMUNITY SALES MANAGER
Call Us @ 770.580.9300

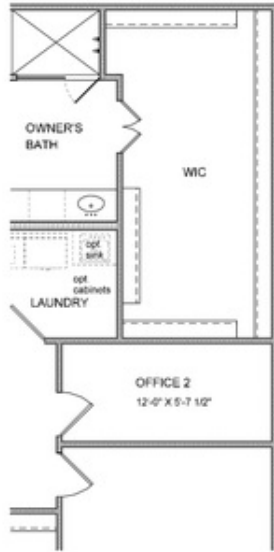
1st Floor Options



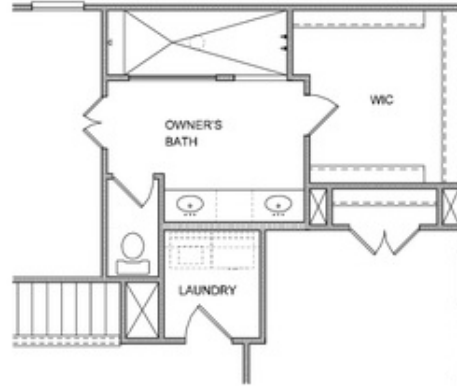
Want to Know More
About This Home?

CONTACT OUR COMMUNITY SALES MANAGER
Call Us @ 770.580.9300

2nd Floor Options



OPT OFFICE 2



OPT WALK-IN SHOWER



OPT BATH 3
* Elevation B ONLY

Want to Know More
About This Home?

CONTACT OUR COMMUNITY SALES MANAGER
Call Us @ 770.580.9300