



PRICED AT
\$896,025

 3333 Sq Ft

 5 Beds

 4.0 Baths

 2 Car Garage

 2.0 Story

ELEVATE YOUR LIFE IN 2023! NEW YEAR NEW PRICE PLUS \$20,000 ANY WAY YOU WANT IT ON ALL CONTRACTS WRITTEN BY FEB 28, 2023 AND CLOSED BY MARCH 31, 2023. THE BENNET HOME DESIGN IS A STUNNING OPEN CONCEPT DESIGN ON AN UNFINISHED BASEMENT. A MAIN FLOOR GUEST SUITE WITH FULL BATH, SEPARATE STUDY, SUNROOM, OPEN KITCHEN TO FAMILY AND DINING AREAS. 10' CEILINGS ON THE MAIN WITH 8' INTERIOR DOORS ARE IMPRESSIVE! BEAUTIFULLY DESIGNED KITCHEN WITH STACKED WHITE CABINETS AT PERIMETER AND WILLOW GRAY ISLAND WITH QUARTZ COUNTERTOPS. THE 2ND FLOOR OFFERS 4 SPACIOUS BEDROOMS WITH 3 FULL BATHS PLUS A SMALL LOFT AREA PERFECT FOR STUDY TIME OR RELAXATION. (PHOTOS ARE OF A PREVIOUSLY BUILT BENNETT HOME) BELLMORE PARK IS AN AWARD WINNING MASTER PLANNED COMMUNITY LOCATED IN THE HEART OF JOHNS CREEK!! CLOSE TO TOP RATED SCHOOLS, GREAT SHOPPING AND ENTERTAINMENT, HOSPITALS, DOCTOR'S OFFICES, HOUSES OF WORSHIP, AND GREAT ACCESS TO MULTIPLE DIFFERENT HIGHWAYS/INTERSTATES. Bellmore Park offers HOA maintained lawns, onsite fitness center, 6 tennis court, basketball court, pools, playground, clubhouse, splash pad, event lawns and a 24 HOUR MANNED GATEHOUSE!! Photos are not of actual home but similar floor plan.

Want to Know More
About This Home?

CONTACT OUR COMMUNITY SALES MANAGER
Call Us @ 770.580.9300



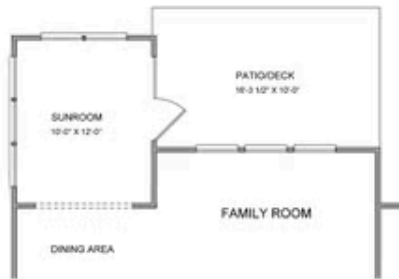
Want to Know More
About This Home?

CONTACT OUR COMMUNITY SALES MANAGER
Call Us @ 770.580.9300

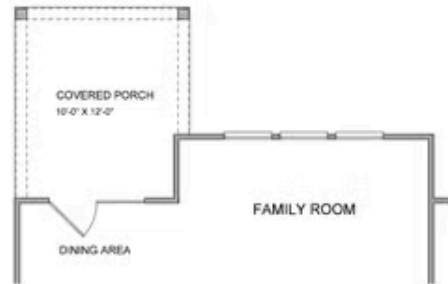


**Want to Know More
About This Home?**

CONTACT OUR COMMUNITY SALES MANAGER
Call Us @ 770.580.9300



Opt. Sunroom



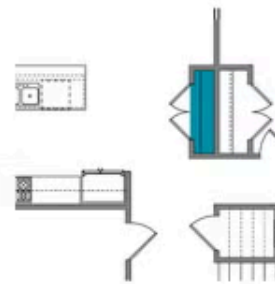
Opt. Covered Porch



Opt. Fireplace



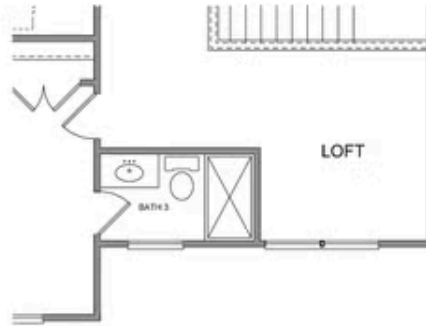
Opt. Rear Fireplace



Opt. Pantry

Want to Know More
About This Home?

CONTACT OUR COMMUNITY SALES MANAGER
Call Us @ 770.580.9300



Opt. 3rd Bath



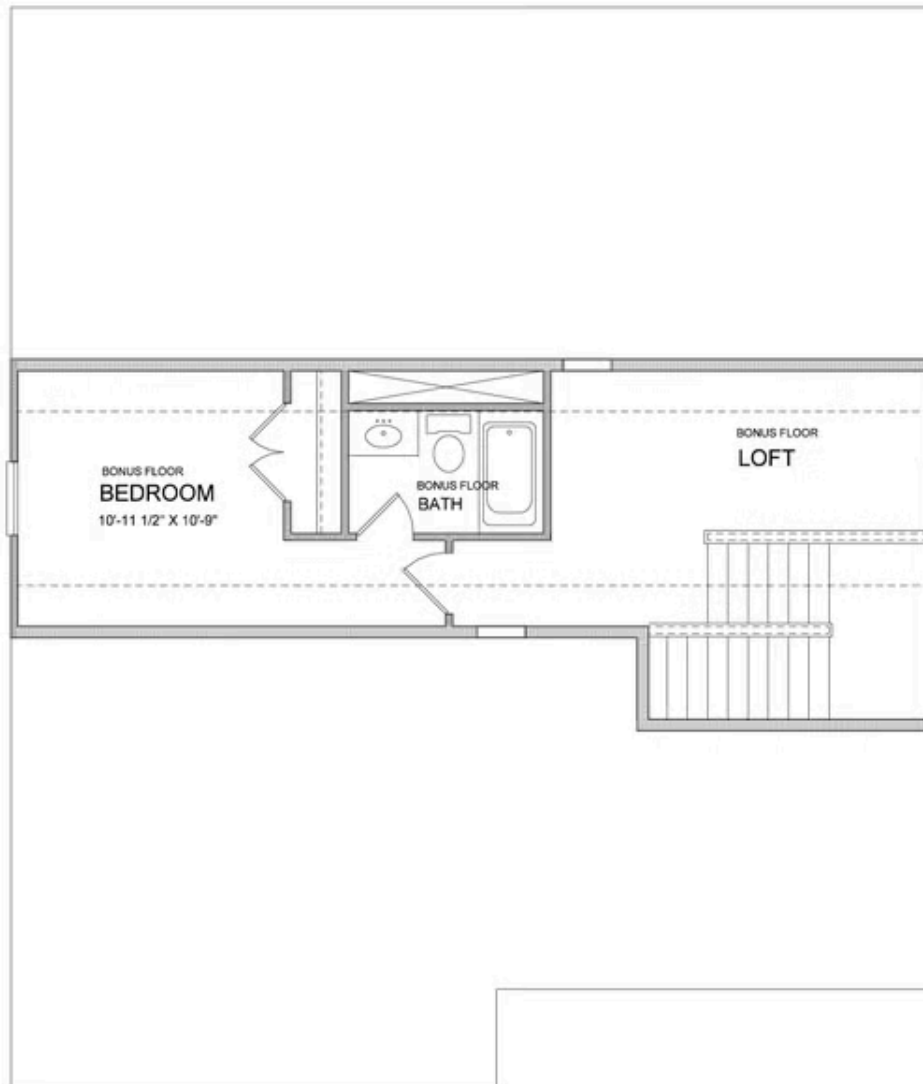
Opt. Owner's Sitting Room



Opt. Owner's Walk-in Shower

Want to Know More
About This Home?

CONTACT OUR COMMUNITY SALES MANAGER
Call Us @ 770.580.9300



Want to Know More
About This Home?

CONTACT OUR COMMUNITY SALES MANAGER
Call Us @ 770.580.9300