



PRICED AT
\$1,296,150

 2865 Sq Ft

 4 Beds

 4.0 Baths

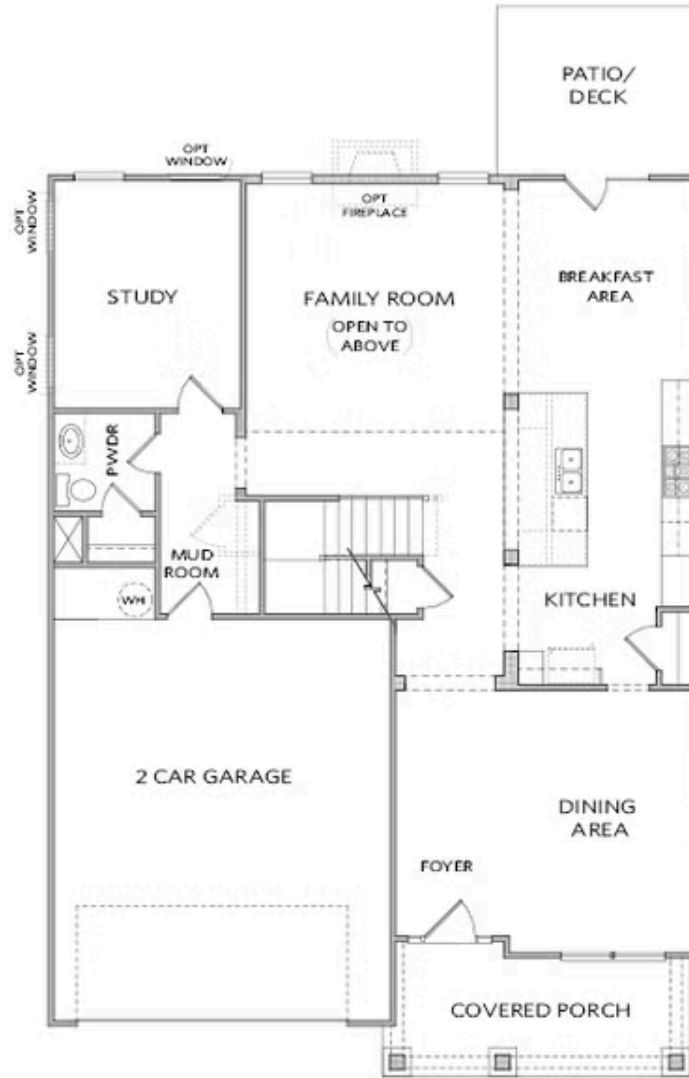
 3 Car Garage

 2.0 Story

LOOKING FOR A BRAND NEW HOME ON A BASEMENT WITH A 3 CAR GARAGE IN JOHNS CREEK UNDER \$1.3M ?? WELL, YOUR SEARCH IS OVER! BELLMOORE PARK IS STARTING CONSTRUCTION ON THIS TWO STORY FAMILY ROOM WITH AN ANTICIPATED COMPLETION DATE OF THE END OF THIS YEAR, ENJOY 5 BEDROOMS WITH 4.5 BATHS IN 4113 FINISHED SQ.FT. ON A BEAUTIFUL CORNER HOMESITE WITH LEVEL BACKYARD! FOR A VERY LIMITED TIME YOU WILL BE ABLE TO MAKE ALL INTERIOR SELECTIONS TO TRULY PERSONALIZE YOUR NEW HOME! THE ANTICIPATED COMPLETION DATE IS AROUND THE END OF THE YEAR, HOPEFULLY YOU AND YOUR FAMILY WILL BE ABLE TO ENJOY FOR THE HOLIDAYS!! THE CALHOUN IS A FAVORITE WITH A STUNNING 2STORY FIRESIDE FAMILY ROOM, GUEST BEDROOM ON THE MAIN WITH FULL BATH, THE SECOND FLOOR FEATURES A LARGE GRAND OWNERS RETREAT WITH ENORMOUS CLOSET SPACE AND TWO OTHER SECONDARY BEDROOMS EACH WITH THEIR OWN FULL BATH. AN UNFINISHED BASEMENT PROVIDES THE PERFECT OPPORTUNITY TO EXTEND YOUR LIVING SPACE AND ADD MORE SQUARE FOOTAGE. At TPG, we value our customer, team member, and vendor team safety. Our communities are active construction zones and may not be safe to visit at certain stages of construction. ...

**Want to Know More
About This Home?**

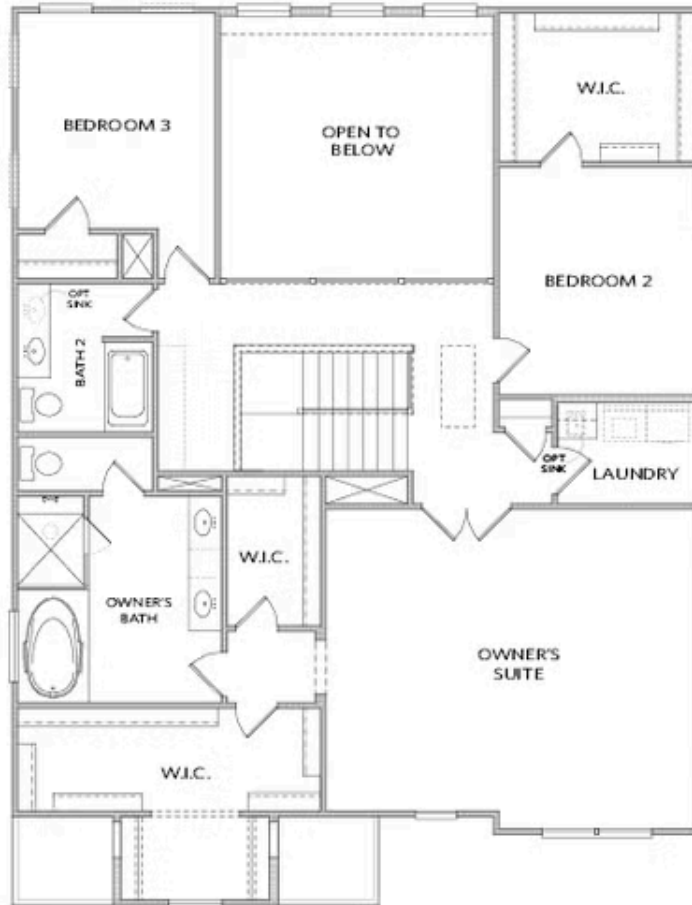
CONTACT OUR COMMUNITY SALES MANAGER
Call Us @ 770.580.9300



Elevation A

Want to Know More
About This Home?

CONTACT OUR COMMUNITY SALES MANAGER
Call Us @ 770.580.9300



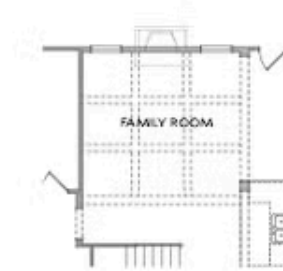
Elevation A

Want to Know More
About This Home?

CONTACT OUR COMMUNITY SALES MANAGER
Call Us @ 770.580.9300



OPT Covered Deck/Patio



OPT Coffered Ceilings
With OPT Media Room -or- Bedroom 5 Above



OPT Bedroom 4 w. Full Bath 4
No Study & Powder Room



OPT Sunroom

Want to Know More
About This Home?

CONTACT OUR COMMUNITY SALES MANAGER
Call Us @ 770.580.9300



OPT Media Room ilo of Two-Story Family Room



OPT Bedroom 5 ilo of Two-Story Family Room



OPT Bedroom 5 w. Bath 5 ilo of Two-Story Family Room



OPT Bath 3 at Bedroom 2



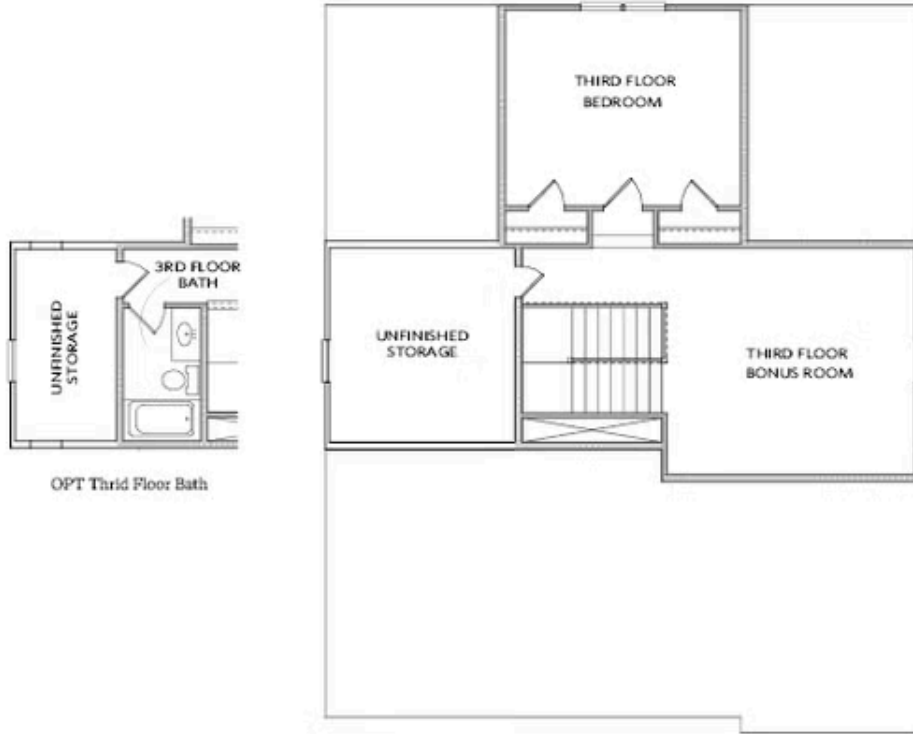
OPT Owner's Walk-In Shower



OPT En-Law Suite at Bedroom 3

Want to Know More
 About This Home?

CONTACT OUR COMMUNITY SALES MANAGER
 Call Us @ 770.580.9300



OPT Third Floor Bath

OPTIONAL THRID FLOOR

*ONLY Available on a Slab Home

**Want to Know More
About This Home?**

CONTACT OUR COMMUNITY SALES MANAGER
Call Us @ 770.580.9300