








PRICED AT
\$788,500

-  3500 Sq Ft
-  4 Beds
-  3.5 Baths
-  2 Car Garage
-  3.0 Story

The Raleigh C; Come personalize your new home in Bellmoore Park!! HOME IS TO BE BUILT. An Exclusive Award Winning Master Planned Community in Johns Creek offering exquisite homes and superb community amenities for everyone in the family to enjoy! The Raleigh home design offers beautiful features inside and out, The MAIN FLOOR features 10' Ceilings with 8' Doors, Living Room/Study, an Open Kitchen with island and a large open concept to the Family Room with GREAT NATURAL LIGHT and the covered walk out patio off the breakfast room is a wonderful outdoor retreat. A STUNNING OWNERS RETREAT COMPELTE WITH SITTING ROOM, LARGE ENSUITE WITH SEPARATE HIS/HERS WALK IN CLOSETS AND A COVERED DECK OFF THE SITTING ROOM!! The 2nd floor offers 3 secondary bedrooms and 2 more full baths, the 3rd floor is a private retreat featuring a large bonus Room OR Bedroom and Full Bath! Bellmoore park is located near shopping, restaurants entertainment, and award-winning schools. Enjoy HOA maintained lawns, onsite fitness center, jr. olympic size pool and kiddie pool, 6 tennis courts, basketball court, splash pad, playground, clubhouse and a manned gate. Home is about to start construction, anticipated completion time frame of late summer 2023.

**Want to Know More
About This Home?**

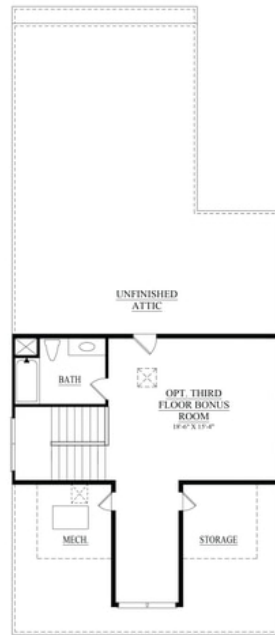
CONTACT OUR COMMUNITY SALES MANAGER
Call Us @ 770.580.9300



Optional 5th Bedroom ILO Living Room

**Want to Know More
 About This Home?**

CONTACT OUR COMMUNITY SALES MANAGER
 Call Us @ 770.580.9300



Optional 3rd Floor (for Elevation A and B only)

**Want to Know More
About This Home?**

CONTACT OUR COMMUNITY SALES MANAGER
Call Us @ 770.580.9300