



PRICED AT
\$733,475

 **2581 Sq Ft**

 **4 Beds**

 **3.5 Baths**

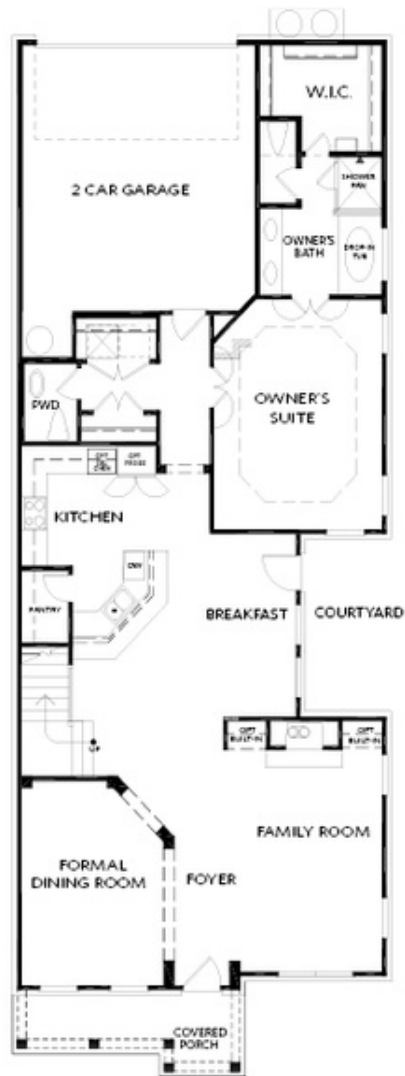
 **2 Car Garage**

 **2.0 Story**

The Kentmere D; OWNERS SUITE ON THE MAIN LEVEL, UNDER CONSTRUCTION NOW WITH A SUMMER MOVE IN DATE. An Exclusive Award Winning Master Planned Community in Johns Creek offering exquisite homes and superb community amenities for everyone in the family to enjoy! The Kentmere home design offers beautiful features inside and out... The MAIN FLOOR features 10' Ceilings with 8' Doors, Formal Dining/Study, an Open Kitchen with island and a large open concept to the Family Room with GREAT NATURAL LIGHT and the covered walk out patio off the breakfast room is a wonderful outdoor retreat. The 2nd floor offers 3 secondary bedrooms and 2 more full baths plus nice loft perfect for a 2nd floor t.v. area/study area, play space... you decide how you want to use this wonderful open space Bellmoore park is located near shopping, restaurants entertainment, and award-winning schools. Enjoy HOA maintained lawns, onsite fitness center, jr. olympic size pool and kiddie pool, 6 tennis courts, basketball court, splash pad, playground, clubhouse and a manned gate. Anticipated completion time frame of late summer 2023.

**Want to Know More
About This Home?**

**CONTACT OUR COMMUNITY SALES MANAGER
Call Us @ 770.580.9300**



FIRST FLOOR

Elevation G

Want to Know More
About This Home?

CONTACT OUR COMMUNITY SALES MANAGER
Call Us @ 770.580.9300



SECOND FLOOR

Elevation G

Want to Know More
About This Home?

CONTACT OUR COMMUNITY SALES MANAGER
Call Us @ 770.580.9300