



PRICED AT
\$740,150

 **2866 Sq Ft**

 **5 Beds**

 **4.0 Baths**

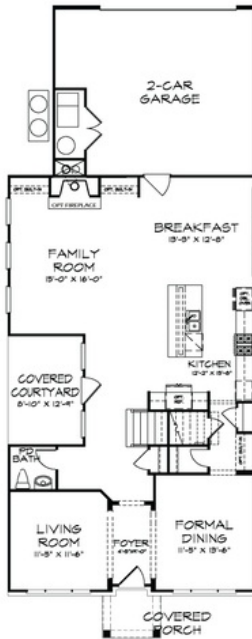
 **2 Car Garage**

 **3.0 Story**

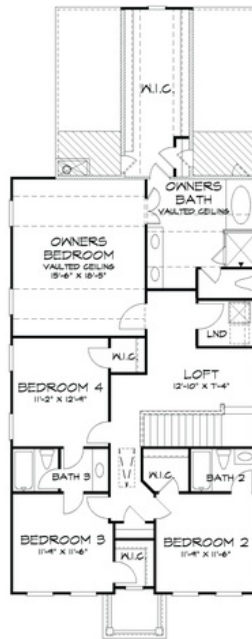
The Crestwick ; Come personalize your new home in Bellmoore Park!! An Exclusive Award Winning Master Planned Community in Johns Creek offering exquisite homes and superb community amenities for everyone in the family to enjoy! The Tensley home design offers beautiful features inside and out, from the covered front porch welcoming you and your guest to the Open Concept interior design providing great space to entertain and just relax! The MAIN FLOOR features 10' Ceilings with 8' Doors, GUEST ROOM W/ FULL BATH, an Open Kitchen with island and a Fireside Family Room with GREAT NATURAL LIGHT. The 2nd floor offers 4 bedrooms and 3 full baths and a Loft area. Bellmoore park is located near shopping, restaurants entertainment, and award-winning schools. Enjoy HOA maintained lawns, onsite fitness center, jr. olympic size pool and kiddie pool, 6 tennis courts, basketball court, splash pad, playground, clubhouse and a manned gate. Home is about to start construction, anticipated completion time frame of early 2023.

**Want to Know More
About This Home?**

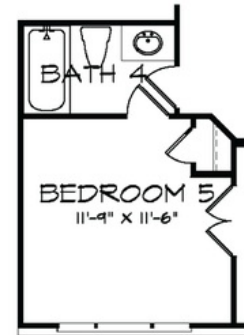
CONTACT OUR COMMUNITY SALES MANAGER
Call Us @ 770.580.9300



First Floor



Second Floor



5th Bedroom ILO of Study

Want to Know More
 About This Home?

CONTACT OUR COMMUNITY SALES MANAGER
 Call Us @ 770.580.9300