



PRICED FROM
\$939,400

 2,852 - 3,922 Sq Ft

 3 - 6 Beds

 2.5 - 6.5 Baths

 2 Car Garage

 3.0 Story

- Optional Sunroom with Fireplace and Access to Deck/Patio
- Spacious Owner's Suite with Dual Walk-In Closets, Separate Tub, Shower and Dual Vanities
- Optional Third Level Retreat with Bedroom, Bonus Room and Large Storage Area
- Additional Bedroom Options To Provide Three to Six Bedrooms
- Optional Media Room On Upper Level

[Read More Online](#)

Available Elevations



Elevation A



Elevation B



Elevation C



Elevation D



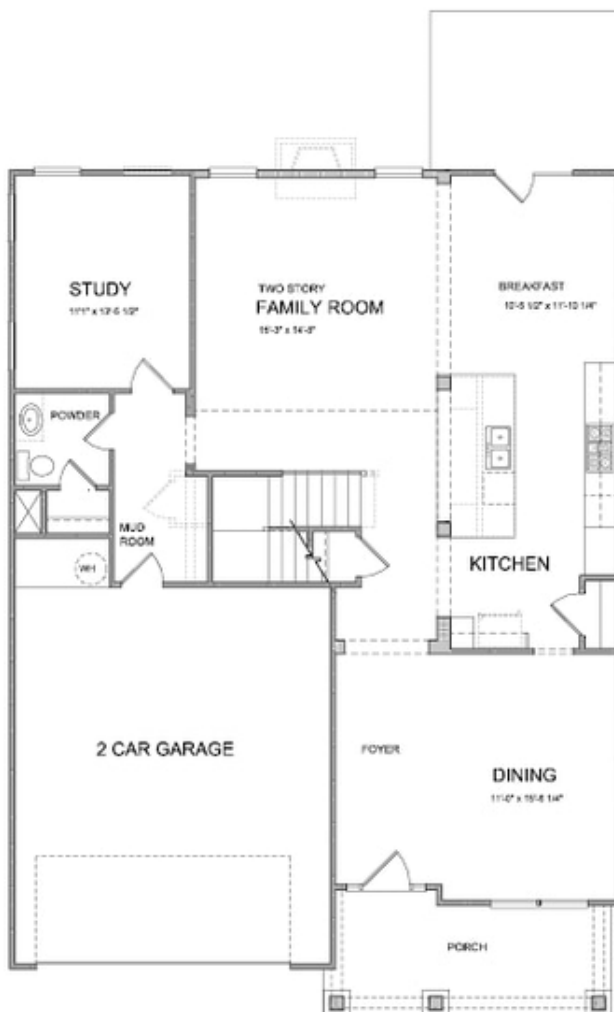
Elevation E



Elevation F

Please refer to actual blueprints for an accurate representation of home design. Home design and elevations subject to change without prior notice. Window, door and porch locations may vary by elevation. Subject to error, omission or withdrawal.



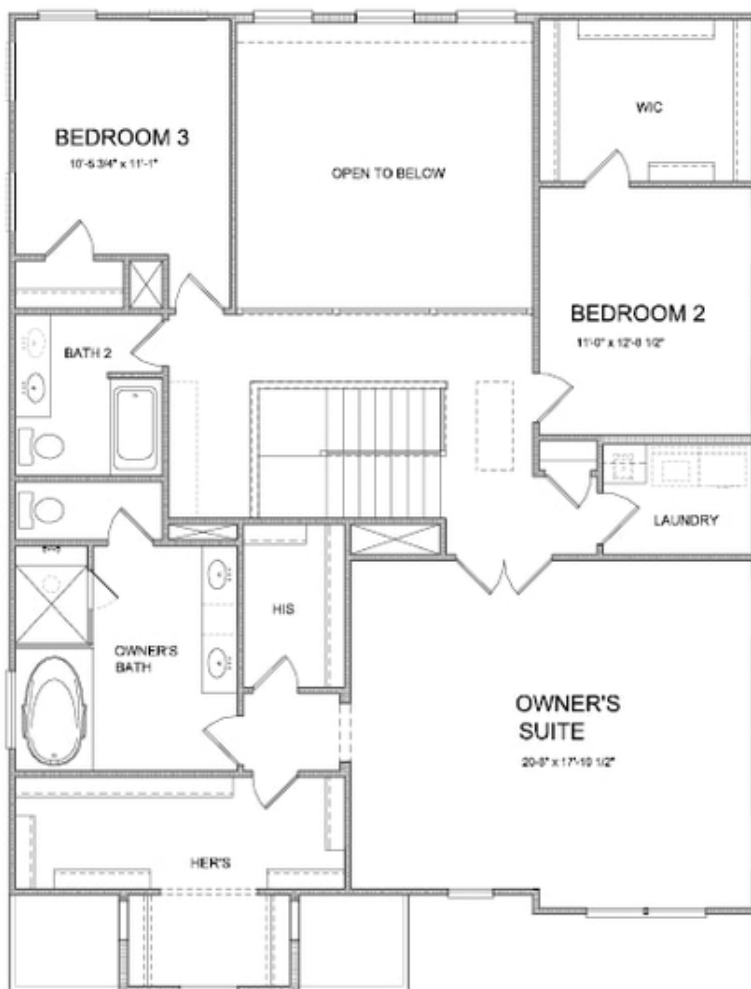


Want to Know More
About This Home?

CONTACT OUR NEW HOME NAVIGATOR

NONE

Call Us @ (770) 580-9300



**Want to Know More
About This Home?**

CONTACT OUR NEW HOME NAVIGATOR

NONE

Call Us @ (770) 580-9300

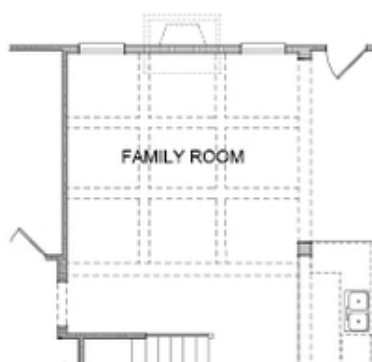


Want to Know More
About This Home?

CONTACT OUR NEW HOME NAVIGATOR

NONE

Call Us @ (770) 580-9300



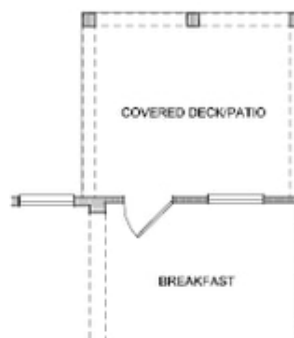
Opt. Coffered Ceilings
w/ Opt. Media Room or Bedroom 5 above



Opt. Bedroom 4 w/ Full Bath
No Study & Power Room



Opt. Sunroom



Opt. Covered Deck/Patio

Want to Know More
About This Home?

CONTACT OUR NEW HOME NAVIGATOR

NONE

Call Us @ (770) 580-9300



Opt. Full Bath 3
on Bedroom 2



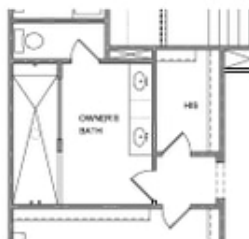
Opt. In-Law Suite on
Bedroom 3



Opt. Bedroom 5
no Open Ceiling on Family Room



Opt. Bedroom 5 w/ Full Bath
no Open Ceiling on Family Room



Opt. Walk-In Shower



Opt. Media Room
no Open Ceiling on Family Room

Want to Know More
About This Home?

CONTACT OUR NEW HOME NAVIGATOR

NONE

Call Us @ (770) 580-9300