



PRICED AT
\$1,540,955

 4077 Sq Ft

 5 Beds

 5.0 Baths

 3 Car Garage

 2.0 Story

Elevate your New Home Experience with a BRAND NEW HAMILTON "D" UNDER CONSTRUCTION NOW FOR A FALL COMPLETION BY The Providence Group! WELCOME TO BELLWYN THE NEWEST GATED NEW HOME COMMUNITY IN JOHNS CREEK, WITH DIRECT ACCESS TO WEBB BRIDGE PARK YOU WILL WALK RIGHT INTO A 109 ACRE PARK WITH WALKING TRAILS, SPORTS FIELDS, TENNIS/PICKELBALL COURTS AND ENDLESS OUTDOOR ENJOYMENT ACROSS THE STREET FROM THE ENTRANCE TO THE COMMUNITY. From the moment you step inside through your double door entry, you're welcomed by an open and inviting floorplan anchored by a main-level guest suite complete with a private ensuite bath—ideal for accommodating visitors or creating a comfortable multigenerational living option. At the heart of the home lies a truly exceptional kitchen, crafted for both everyday living and grand entertaining. This chef-inspired space boasts an abundance of cabinetry—more than you could ever fill—paired with expansive countertops that provide endless room for meal prep, serving, and gathering. Whether hosting a holiday dinner or a casual weekend brunch, this kitchen delivers both style and practicality. Completing the space is an extraordinary walk-in pantry that feels like a luxury in itself—offering incredible storage and organization that will impress even the most seasoned home ...

**Want to Know More
About This Home?**

CONTACT OUR COMMUNITY SALES MANAGER
Call Us @ 678.392.7466



FIRST FLOOR

Elevation D

Want to Know More
About This Home?

CONTACT OUR COMMUNITY SALES MANAGER
Call Us @ 678.392.7466

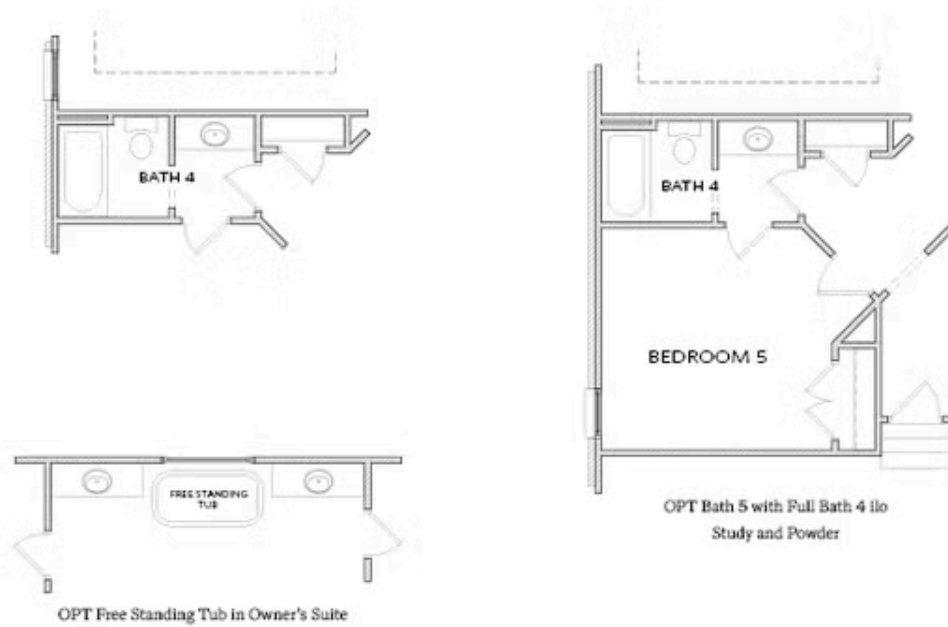


SECOND FLOOR

Elevation D

Want to Know More
About This Home?

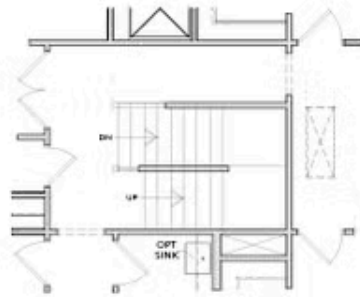
CONTACT OUR COMMUNITY SALES MANAGER
Call Us @ 678.392.7466



OPTIONS

Want to Know More
About This Home?

CONTACT OUR COMMUNITY SALES MANAGER
Call Us @ 678.392.7466



Stairwell w. OPT 3rd Floor



OPT 3rd Floor Powder Room



OPT Media Room



OPT Bedroom 6 w. Full Bath 6

OPTIONAL THIRD FLOOR

Want to Know More
About This Home?

CONTACT OUR COMMUNITY SALES MANAGER
Call Us @ 678.392.7466