



PRICED FROM  
**\$1,253,900**

 3,472 - 4,394 Sq Ft

 5 - 6 Beds

 4 - 5 Baths

 2 Car Garage

 2.0 - 3.0 Story

- Expansive Two-Story Home Design with thoughtfully defined living spaces
- Main-Level Guest Bedroom or Home Office offering flexibility for everyday living
- Gourmet Kitchen with Center Island overlooking the family room and breakfast area
- Spacious Separate Dining Room ideal for formal gatherings and entertaining
- Luxurious Owner's Retreat featuring an elegant bath with distinctive dual vanities
- His and Her Walk-In Closets creating a true private suite experience
- Upper-Level Secondary Bedrooms with private or shared full bath options
- Front Covered Deck and Bay Patio extending the home's living space outdoors

[Read More Online](#)

## Available Elevations



Elevation A



Elevation C



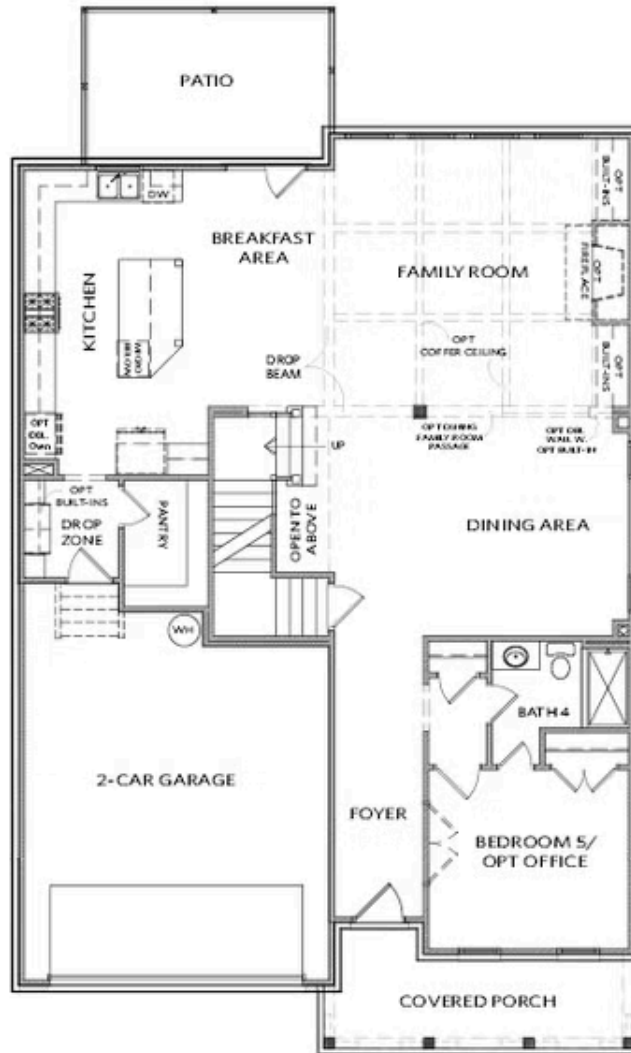
Elevation E



Elevation G

Please refer to actual blueprints for an accurate representation of home design. Home design and elevations subject to change without prior notice. Window, door and porch locations may vary by elevation. Subject to error, omission or withdrawal.

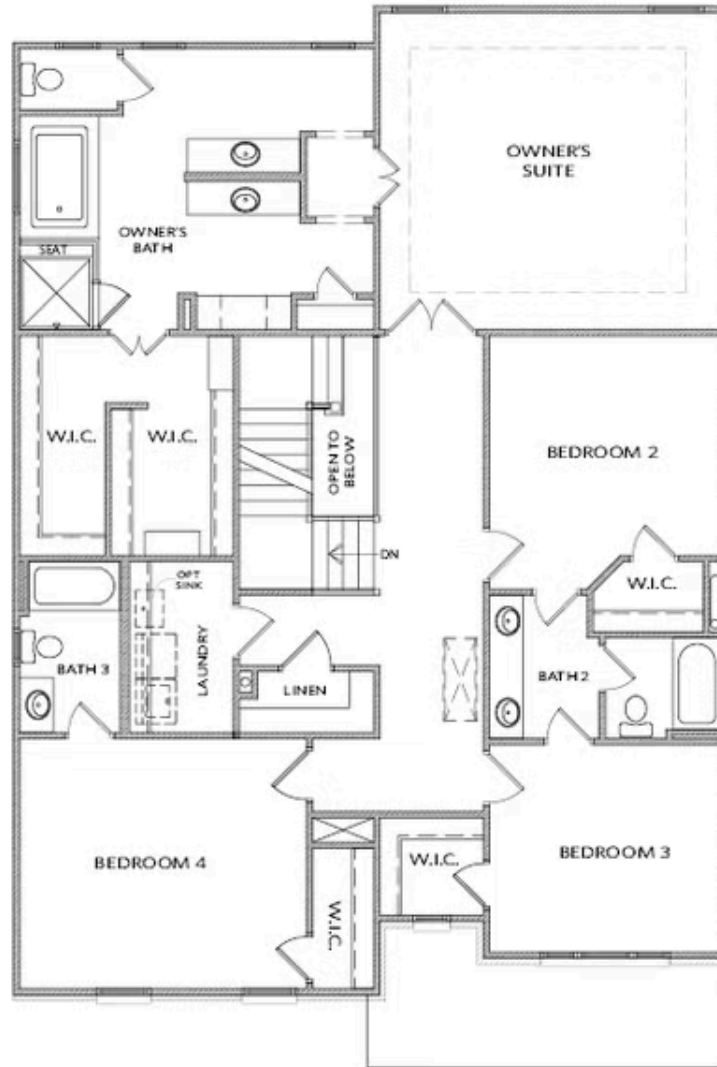




Elevation A & B

Want to Know More  
 About This Home?

CONTACT OUR COMMUNITY SALES MANAGER  
 Call Us @ 678.392.7466



Elevation A & B

Want to Know More  
About This Home?

CONTACT OUR COMMUNITY SALES MANAGER  
Call Us @ 678.392.7466



OPT Owner's Walk-In Shower



OPT Extended Porch & Awning



OPT Covered Porch



OPT Sunroom; OPT Patio/Deck  
 OPT Fireplace on Sunroom



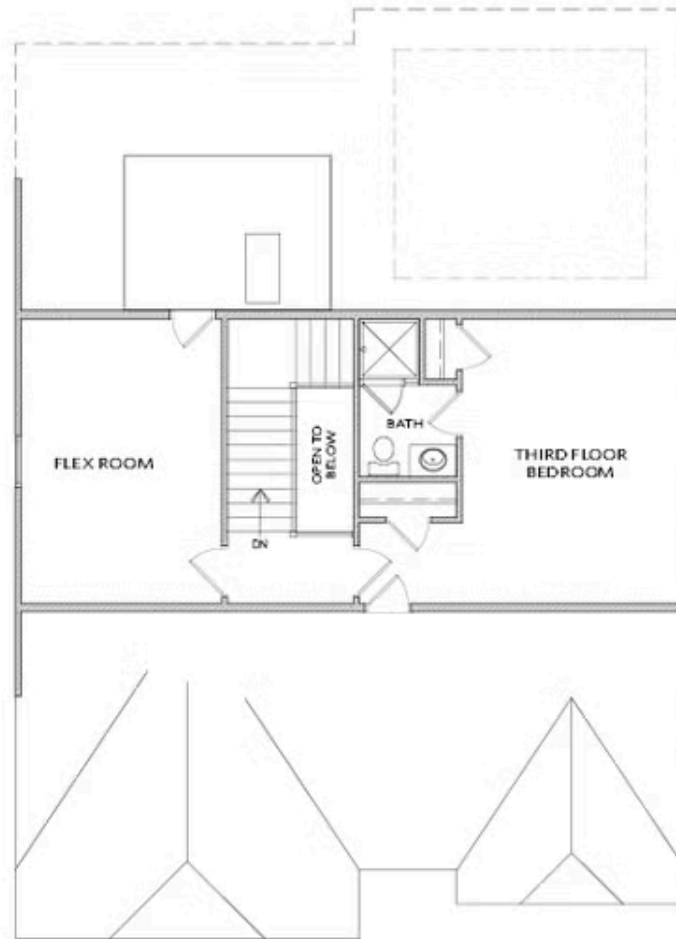
OPT Extended Kitchen



OPT Extended Kitchen w. OPT Sunroom &  
 OPT Patio/Deck

Want to Know More  
 About This Home?

CONTACT OUR COMMUNITY SALES MANAGER  
 Call Us @ 678.392.7466



\*ONLY Available on a Slab Home

Want to Know More  
About This Home?

CONTACT OUR COMMUNITY SALES MANAGER  
Call Us @ 678.392.7466