



PRICED AT  
**\$1,384,290**

 4105 Sq Ft

 6 Beds

 5.0 Baths

 3 Car Garage

 2.0 Story

New Year, New Home, New You!! The Hamilton "D" @ KNOLLWOOD, a brand new Providence Group community located in the heart of Johns Creek!! Don't miss this opportunity to purchase in this exclusive, 20 home community offering spacious homesites, fenced in backyards, two and three car garages, four sides brick and the Northview High school district! The Hamilton plan will feature a three car garage, six bedrooms and five bathrooms! This beautiful design has a stunning entry way, guest suite on the main, formal dining room and an open design with a kitchen and family room that are perfect for entertaining! AND a huge walk in pantry that is every chef's best friend! Upstairs, on the second floor, you will find a gorgeous double door entry into the spacious and light-filled owner's suite. The owner's bath features double vanity, soaking tub, walk in shower and two very spacious closets! One additional bedroom with an en suite and two bedrooms with a shared, walk through bathroom. There is also a HUGE bonus room, perfect for family game night or an upstairs media room! The third floor private retreat features the sixth bedroom with bathroom. 10 ft. ceilings on the main floor, ...

**Want to Know More  
About This Home?**

CONTACT OUR COMMUNITY SALES MANAGER  
Call Us @ 678.424.6275



Want to Know More  
About This Home?

CONTACT OUR COMMUNITY SALES MANAGER  
Call Us @ 678.424.6275

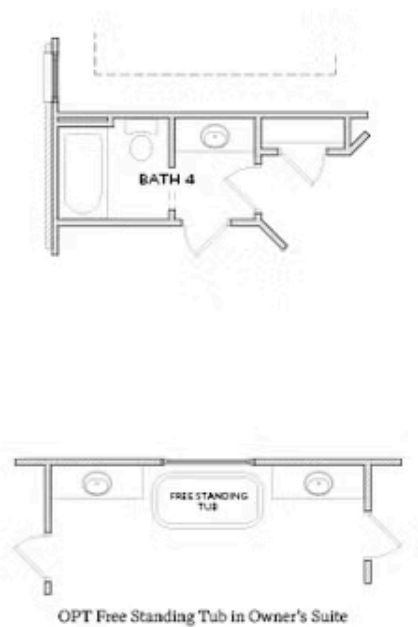


SECOND FLOOR

Elevation D

Want to Know More  
About This Home?

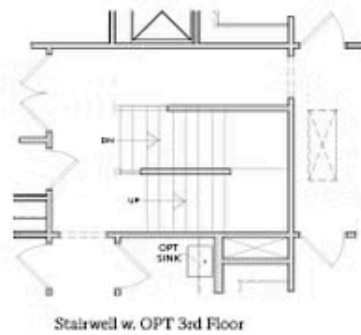
CONTACT OUR COMMUNITY SALES MANAGER  
Call Us @ 678.424.6275



## OPTIONS

Want to Know More  
About This Home?

CONTACT OUR COMMUNITY SALES MANAGER  
Call Us @ 678.424.6275



### OPTIONAL THIRD FLOOR

Want to Know More  
About This Home?

CONTACT OUR COMMUNITY SALES MANAGER  
Call Us @ 678.424.6275