



PRICED FROM
\$1,295,000

 **3,919 - 4,207 Sq Ft**

 **4 - 5 Beds**

 **3.5 - 4 Baths**

 **2 Car Garage**

 **2.0 Story**

- **Gourmet Kitchen Overlooks the Family Room, Dining Room, and the Outdoor Living Area which Includes a Covered Porch with an Optional Fireplace**
- **3 Car Garage Separated into 2-Car Garage and 1-Car Garage facing the Side of the Home**
- **Large Owner's Suite has Double Doors Opening to the Owner's Bath which includes a Soaking Tub Separating 2 Vanities, a Stand Up Shower, and 2 Separate Walk-In Closets**
- **Laundry Room is on the Main**
- **Second Floor Features 3 Bedrooms, 2 Baths and a Bonus Room**

[Read More Online](#)

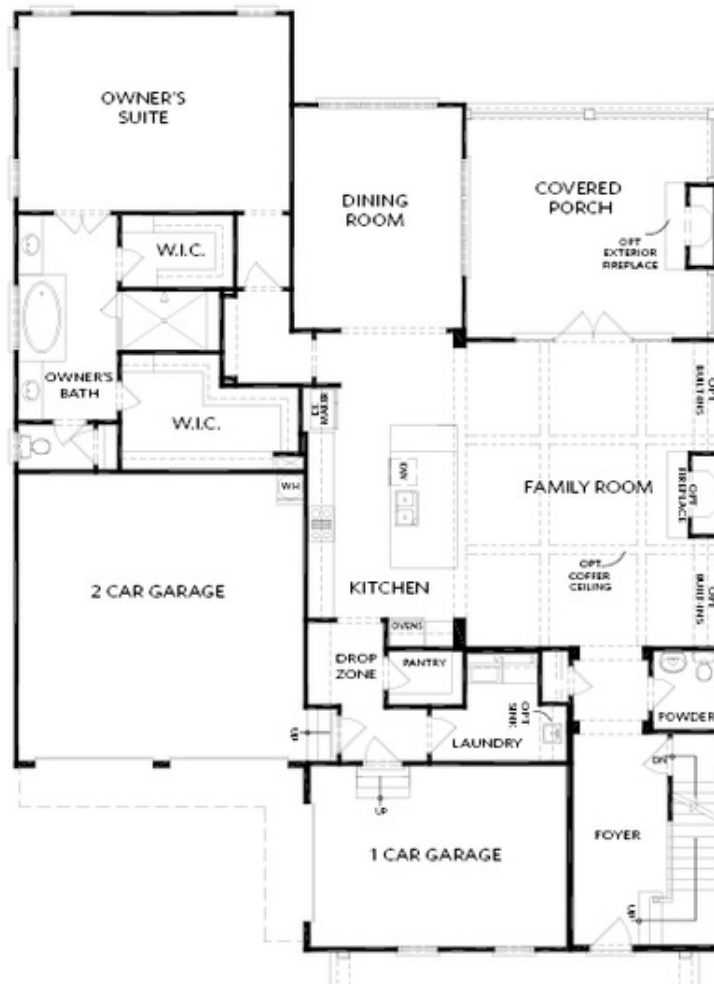
Available Elevations



Elevation B



Elevation D



FIRST FLOOR

Elevation D

Want to Know More
About This Home?

CONTACT OUR COMMUNITY SALES MANAGER
Call Us @ 678.424.6275



SECOND FLOOR

Elevation A, B, D

Want to Know More
About This Home?

CONTACT OUR COMMUNITY SALES MANAGER
Call Us @ 678.424.6275



OPT Study ilo 1-Car Garage



OPT Bedroom 5 ilo 1-Car Garage

OPTIONS

Elevation A, B, D

Want to Know More
About This Home?

CONTACT OUR COMMUNITY SALES MANAGER
Call Us @ 678.424.6275