



PRICED FROM
\$1,200,000

 **3,815 - 4,192 Sq Ft**

 **4 - 6 Beds**

 **3.5 - 6 Baths**

 **3 Car Garage**

 **2.0 - 3.0 Story**

- **Upper Level Owner's Retreat with Spacious Bath with Separate Soaking Tub and Shower Plus Two Walk-In Closets**
- **Gourmet Kitchen Features Island with Seating Overlooking Outdoor Living, Breakfast Room and Family Room**
- **Secondary Bedrooms Feature Private or Shared Full Bath all with W.I.C's**
- **Optional Third Level Retreat with Bedroom/Media Room and Full Bath**

[Read More Online](#)

Available Elevations



Elevation B



Elevation C



Elevation D



FIRST FLOOR

Elevation D

Want to Know More
About This Home?

CONTACT OUR COMMUNITY SALES MANAGER
Call Us @ 678.424.6275

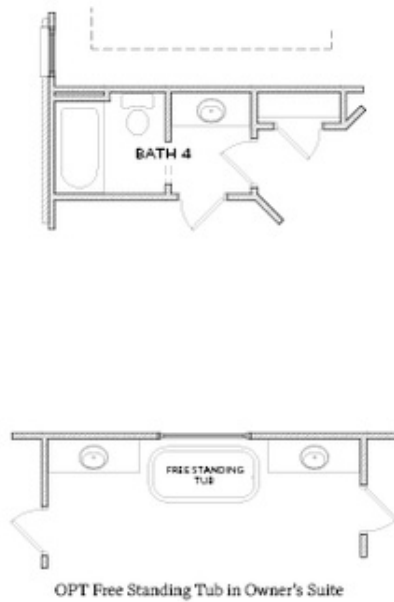


SECOND FLOOR

Elevation D

Want to Know More
About This Home?

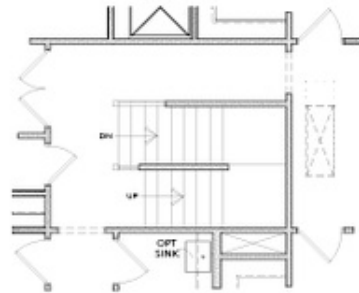
CONTACT OUR COMMUNITY SALES MANAGER
Call Us @ 678.424.6275



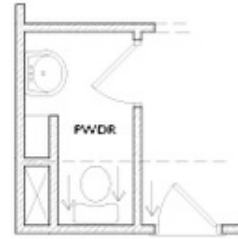
OPTIONS

Want to Know More
About This Home?

CONTACT OUR COMMUNITY SALES MANAGER
Call Us @ 678.424.6275



Stairwell w. OPT 3rd Floor



OPT 3rd Floor Powder Room



OPT Media Room



OPT Bedroom 6 w. Full Bath 6

OPTIONAL THIRD FLOOR

Want to Know More
About This Home?

CONTACT OUR COMMUNITY SALES MANAGER
Call Us @ 678.424.6275