



PRICED AT
\$966,900

 3472 Sq Ft

 5 Beds

 4.0 Baths

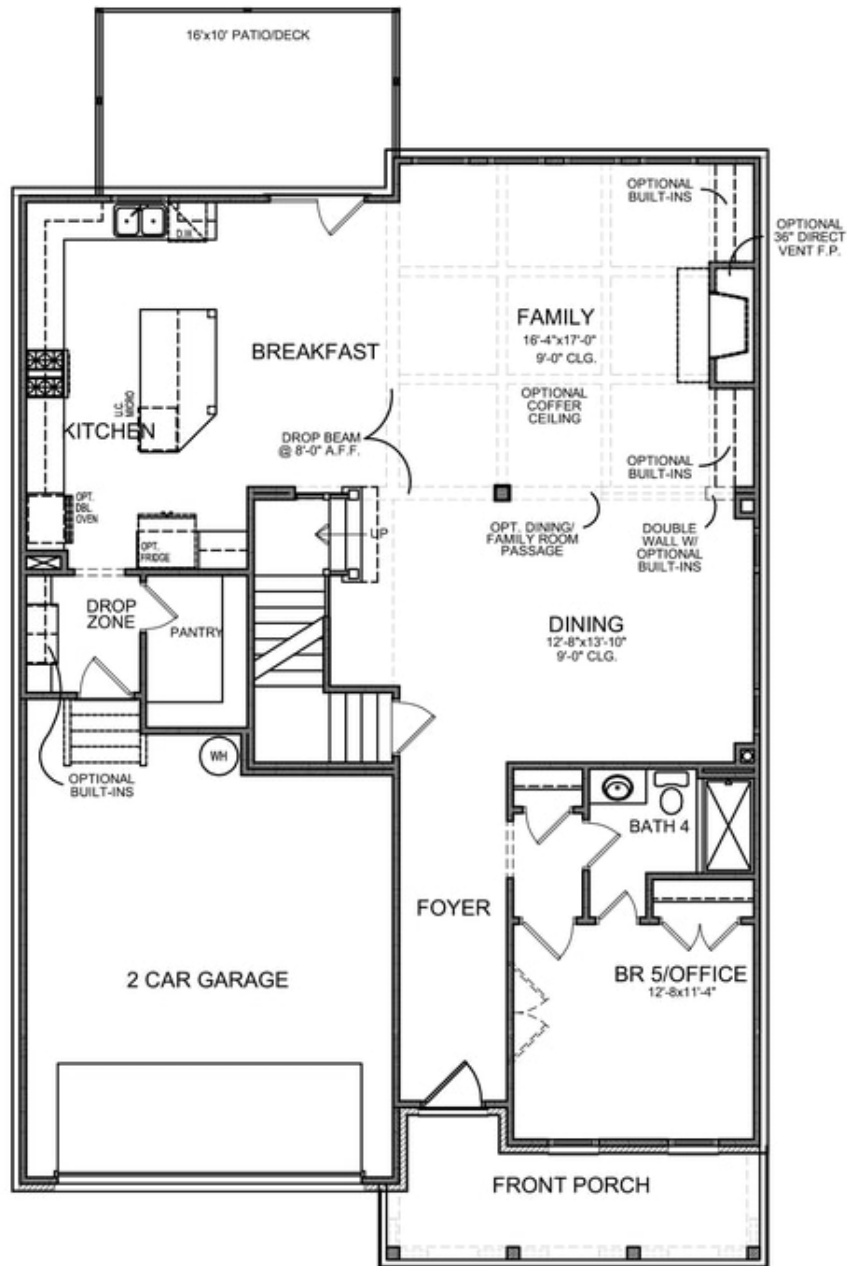
 2 Car Garage

 3.0 Story

Ward's Crossing by The Providence Group, located in Johns Creek. To be Built Montgomery A plan offers 5 bedrooms and 4 full bathrooms. For a limited time, Buyers can personalize by adding all design and structural options. Montgomery home features 4 brick sides with a large covered front porch. This open-concept layout features a main floor guest retreat or home office with a walk-in shower. Chef-inspired Kitchen features custom cabinetry, Quartz countertops, and a GE stainless steel appliance package. The Kitchen overlooks the oversized patio and private flat backyard. The Main living level offers a 10' ceiling and hardwood flooring throughout. The second floor offers 4 incredible bedrooms with 3 full bathrooms. The spacious primary bedroom is complete with a tray ceiling and double doors. The primary bathroom offers separate vanities and closets. Ward's Crossing is a gated community with a pool and pool house. HOA fees cover a community pool, landscaping, and lawn maintenance. Excellent Location with top-rated Schools! Buyers can make ALL design and Structural selections! Estimated Move-In February / March 2024.

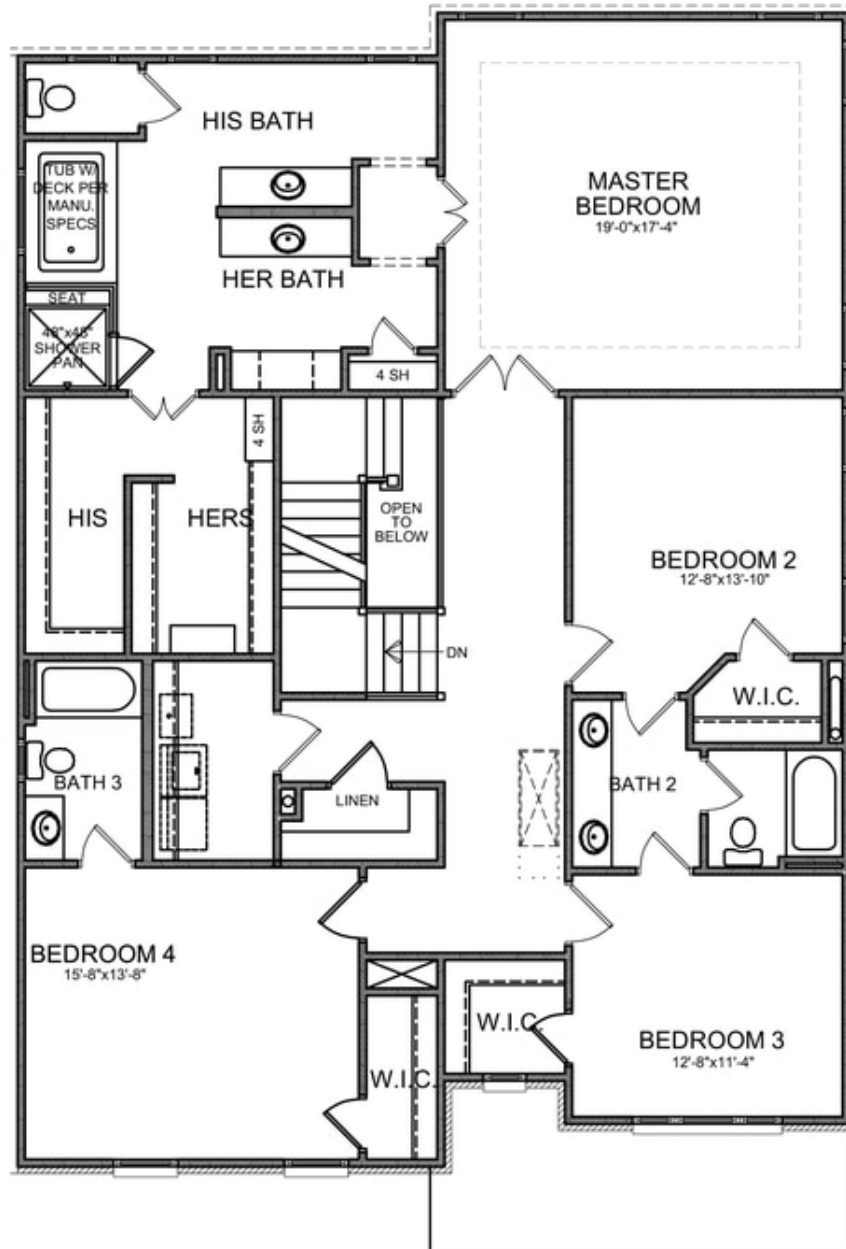
**Want to Know More
About This Home?**

CONTACT OUR COMMUNITY SALES MANAGER
Call Us @ 770.521.2151



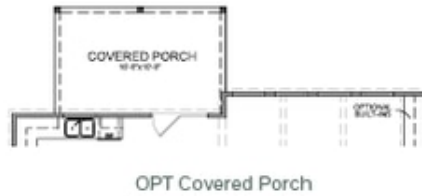
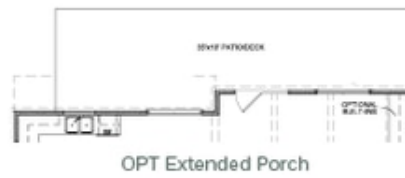
**Want to Know More
 About This Home?**

CONTACT OUR COMMUNITY SALES MANAGER
 Call Us @ 770.521.2151



**Want to Know More
About This Home?**

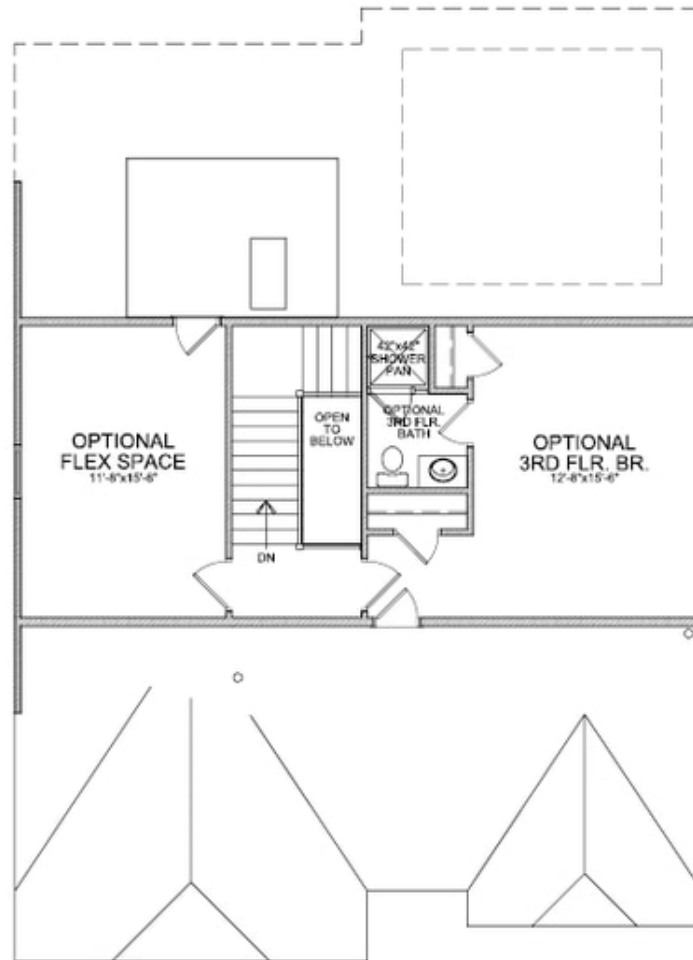
CONTACT OUR COMMUNITY SALES MANAGER
Call Us @ 770.521.2151



OPTIONS

**Want to Know More
 About This Home?**

CONTACT OUR COMMUNITY SALES MANAGER
 Call Us @ 770.521.2151



OPT Third Floor

*Third Floor NOT available on Elevations B & E

**Want to Know More
About This Home?**

CONTACT OUR COMMUNITY SALES MANAGER
Call Us @ 770.521.2151