



PRICED AT  
**\$1,114,860**

 3922 Sq Ft

 5 Beds

 4.0 Baths

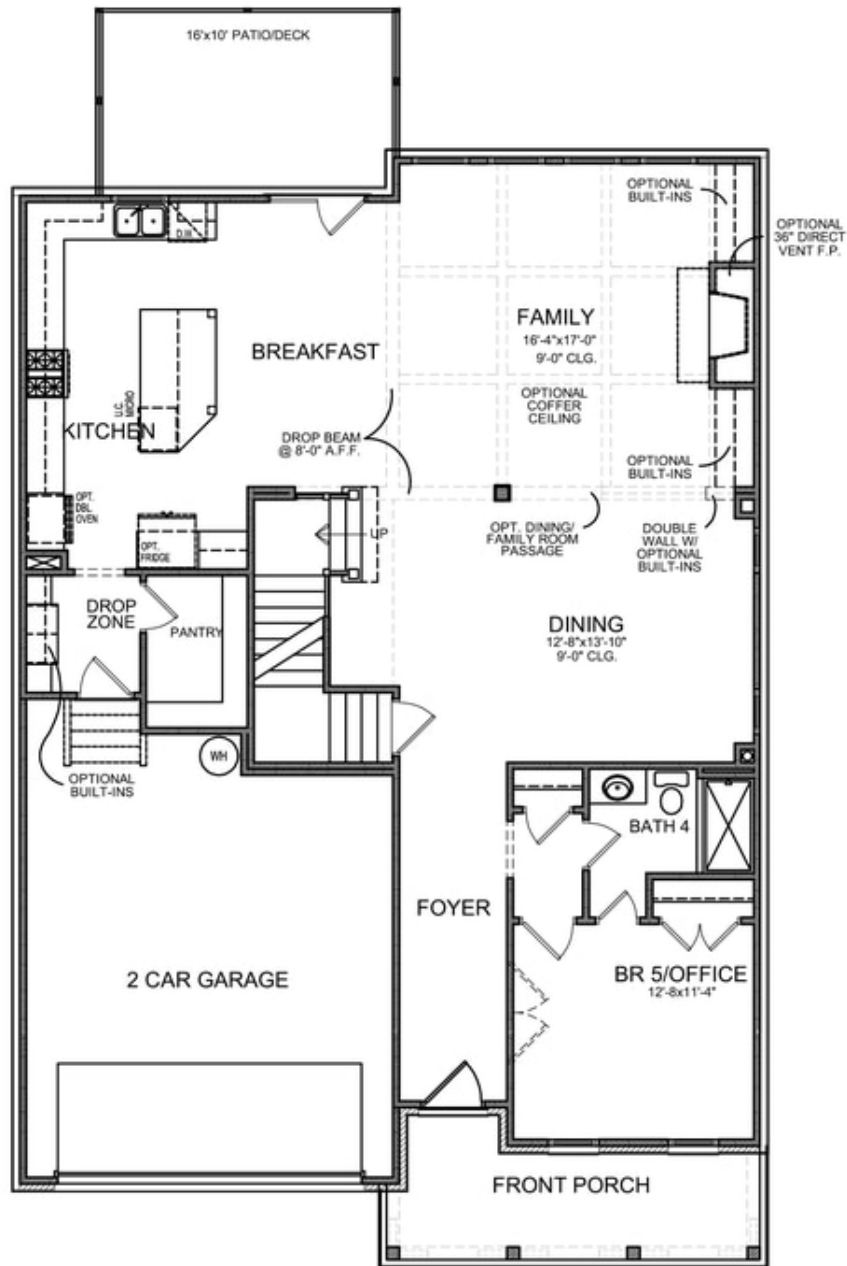
 2 Car Garage

 3.0 Story

Ward's Crossing by The Providence Group, located in Johns Creek. The Montgomery This open-concept layout features a main floor guest retreat or home office with a walk-in shower. Chef-inspired Kitchen features custom cabinetry, Quartz countertops, and a GE stainless steel appliance package. The Kitchen overlooks the oversized patio and private flat backyard. The Main living level offers a 10' ceiling and hardwood flooring throughout and a two-story Family room. The second floor offers 3 incredible bedrooms with 2 full bathrooms. The primary bathroom offers separate vanities and closets. Ward's Crossing is a gated community with a pool and pool house. HOA fees cover a community pool, landscaping, and lawn maintenance. Excellent Location with top-rated Schools! Estimated Move-In April / May 2024.

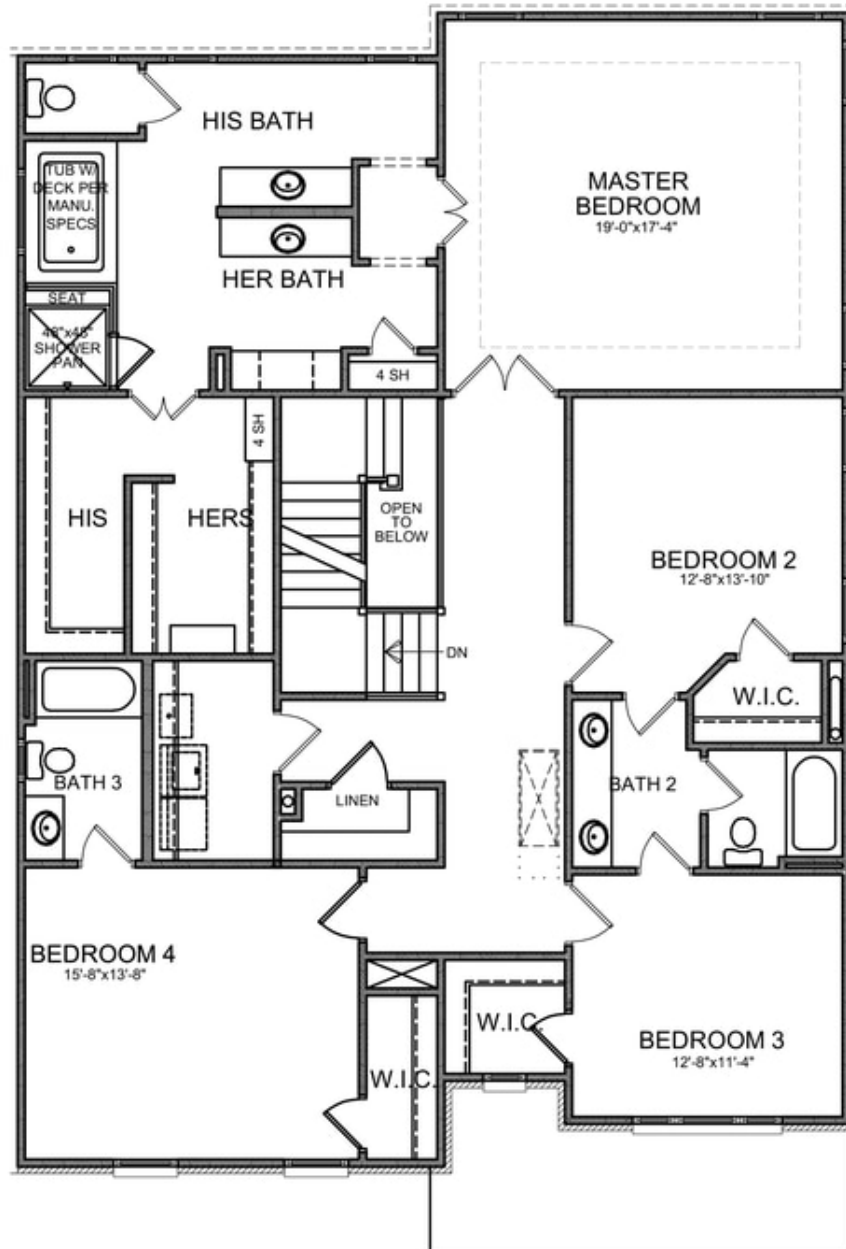
**Want to Know More  
About This Home?**

CONTACT OUR COMMUNITY SALES MANAGER  
Call Us @ 770.521.2151



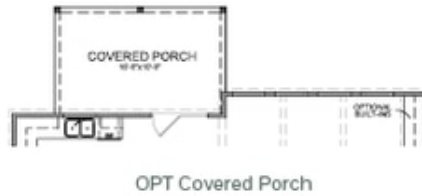
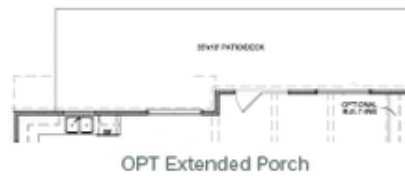
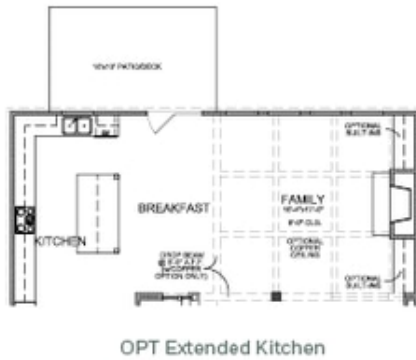
**Want to Know More  
 About This Home?**

CONTACT OUR COMMUNITY SALES MANAGER  
 Call Us @ 770.521.2151



**Want to Know More  
About This Home?**

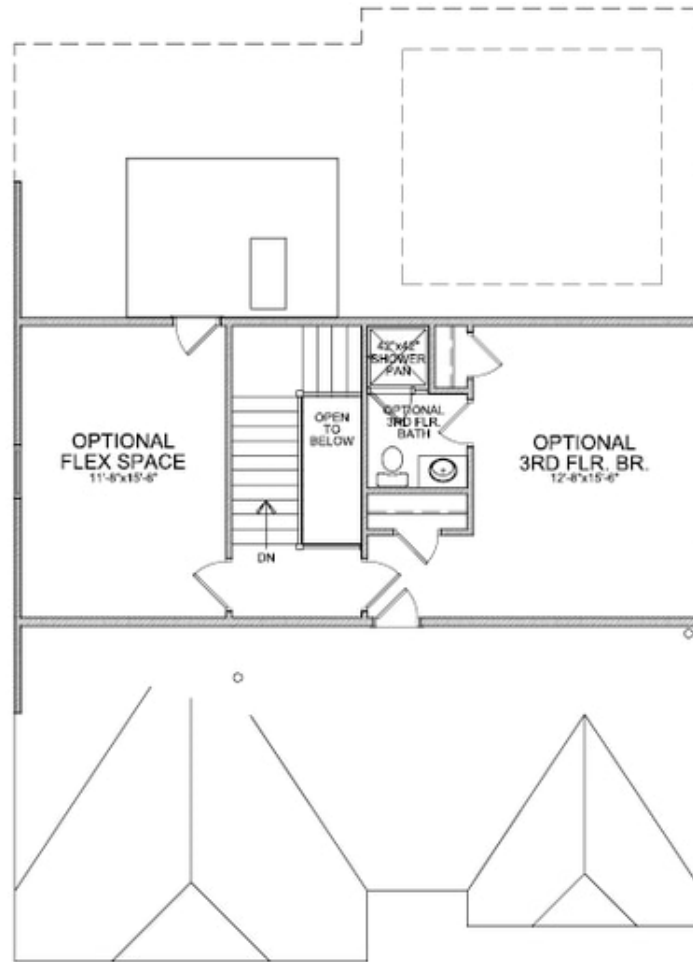
CONTACT OUR COMMUNITY SALES MANAGER  
Call Us @ 770.521.2151



OPTIONS

Want to Know More  
 About This Home?

CONTACT OUR COMMUNITY SALES MANAGER  
 Call Us @ 770.521.2151



OPT Third Floor

\*Third Floor NOT available on Elevations B & E

**Want to Know More  
About This Home?**

CONTACT OUR COMMUNITY SALES MANAGER  
Call Us @ 770.521.2151