








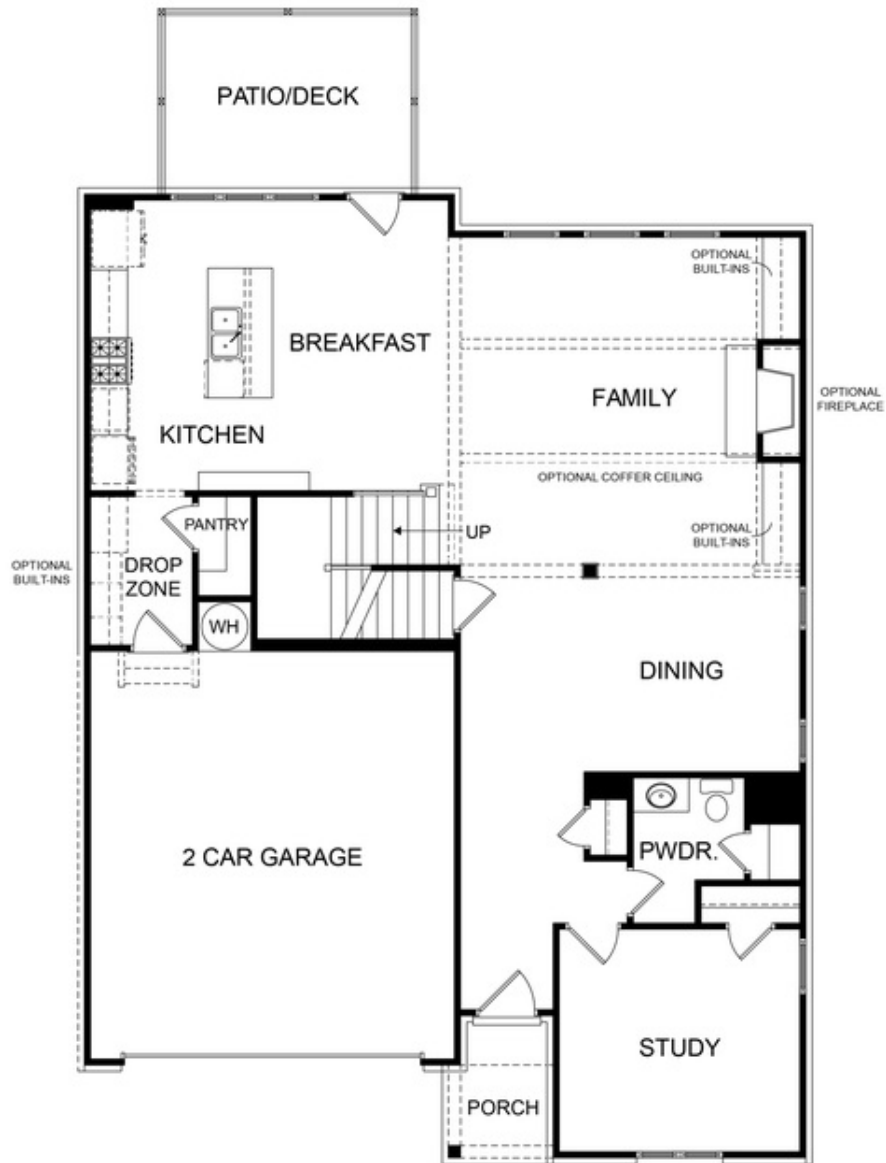
PRICED AT
\$902,645

-  **3111 Sq Ft**
-  **4 Beds**
-  **3.0 Baths**
-  **2 Car Garage**
-  **2.0 Story**

Come home to Ward's Crossing, a highly anticipated, gated community in the heart of Johns Creek! Built by The Providence Group, The Mansfield plan offers 4 bedrooms, 3 baths and over 3100 square feet of luxury living space! This plan is both functional and beautiful and has options! Coming into the home, off of the spacious front porch, you will find a full bedroom and bath on the main level. As you come into the living area of the home, you will find a gorgeous dining room area that is separate from the open kitchen and living but still a cohesive part of the space. The large, light-filled family room is accentuated by a gas burning fireplace, perfect for family movie nights or a cuddle on the couch with your loved one. A beautiful and spacious entertainer's kitchen looks out over the family room and features a very sizeable kitchen island, GE Profile appliances - including double oven, and a large walk-in pantry. Just off the kitchen is the patio, perfectly convenient for outdoor dining! An area across from the pantry provides a great spot for a mudroom built-in as you walk into your 2-car garage. Upstairs, the oversized owner's ...

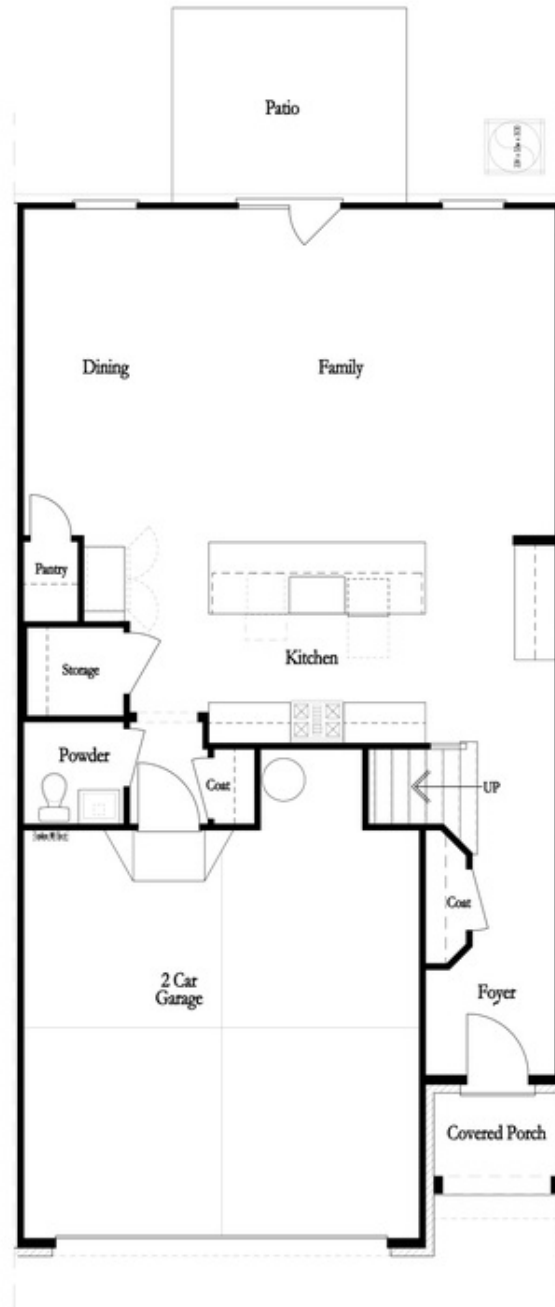
**Want to Know More
About This Home?**

CONTACT OUR COMMUNITY SALES MANAGER
Call Us @ 770.521.2151



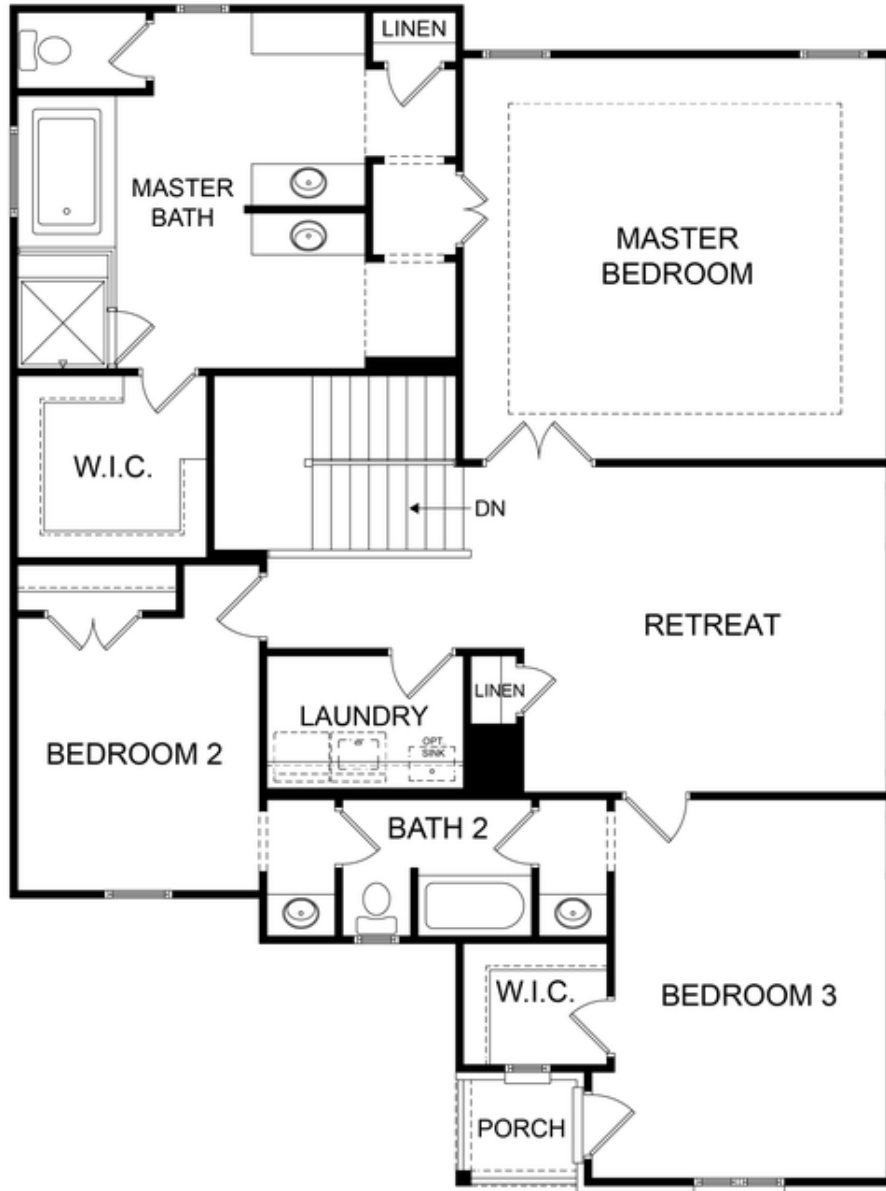
Want to Know More
About This Home?

CONTACT OUR COMMUNITY SALES MANAGER
Call Us @ 770.521.2151



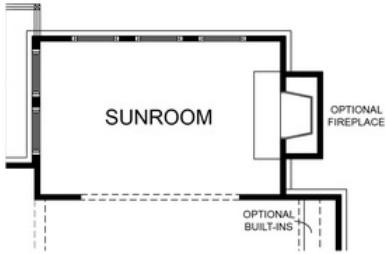
Want to Know More
About This Home?

CONTACT OUR COMMUNITY SALES MANAGER
Call Us @ 770.521.2151

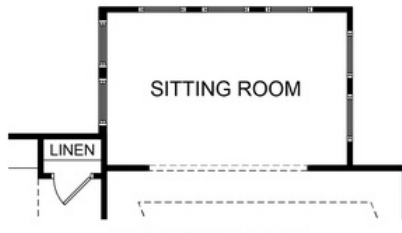


Want to Know More
About This Home?

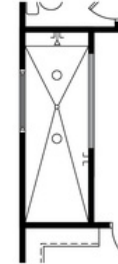
CONTACT OUR COMMUNITY SALES MANAGER
Call Us @ 770.521.2151



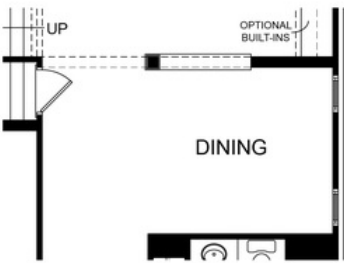
OPT. SUNROOM



OPT. SITTING ROOM



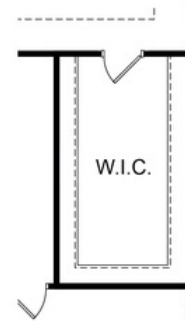
OPT. WALK-IN SHOWER



OPT. DIVISION WALL FOR DINING



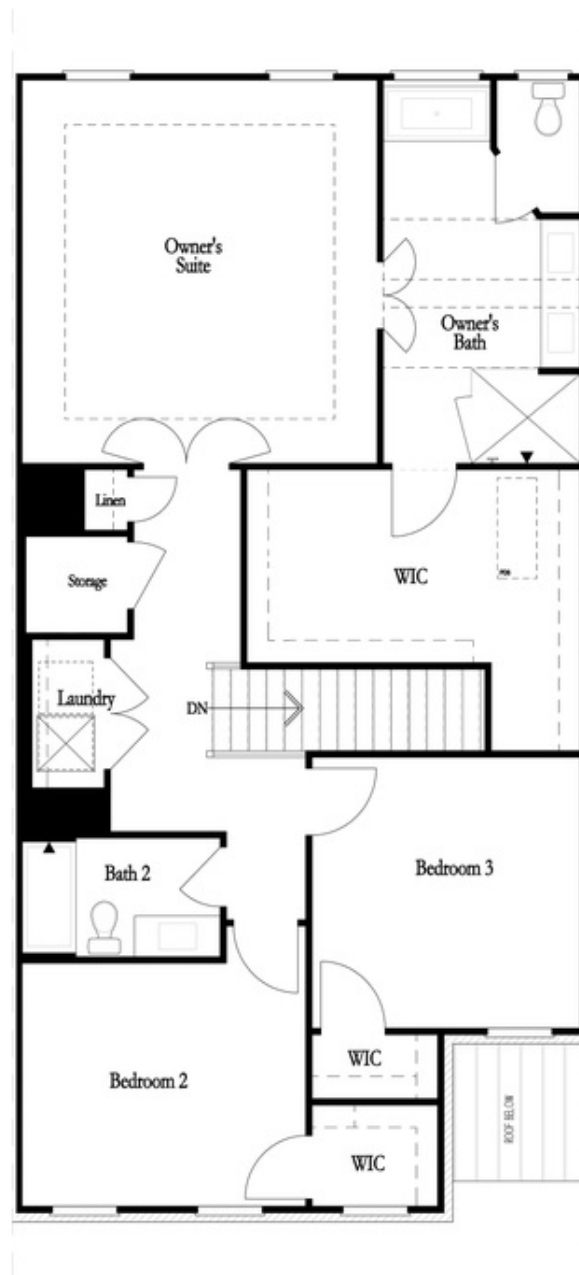
OPT. BEDROOM WITH BATH ILO STUDY



OPT. ADDITIONAL WALK-IN CLOSET

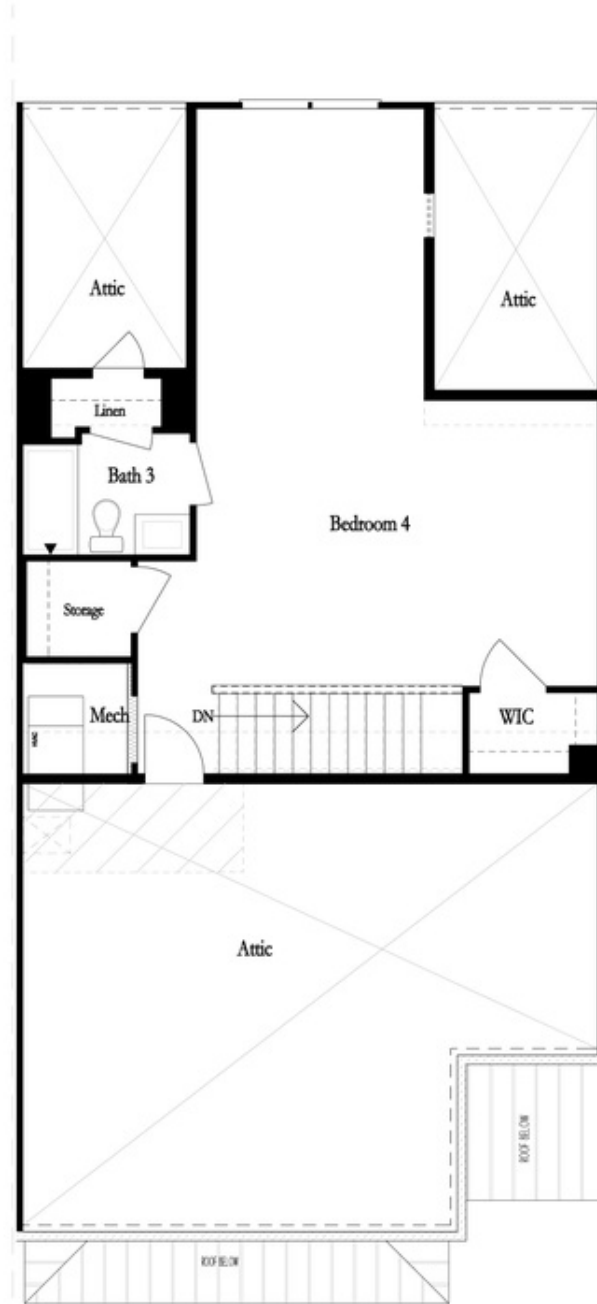
Want to Know More
 About This Home?

CONTACT OUR COMMUNITY SALES MANAGER
 Call Us @ 770.521.2151



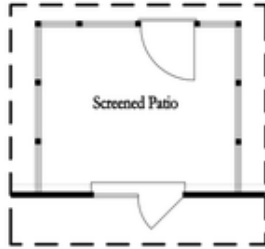
Want to Know More
About This Home?

CONTACT OUR COMMUNITY SALES MANAGER
Call Us @ 770.521.2151

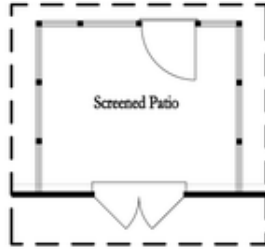


Want to Know More
About This Home?

CONTACT OUR COMMUNITY SALES MANAGER
Call Us @ 770.521.2151



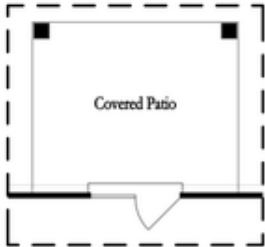
*Opt. Screened Patio
w/ Std Garden Door*



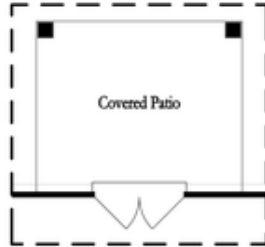
*Opt. Screened Patio
w/ French Door*



*Opt. Screened Patio
w/ Slider Door*



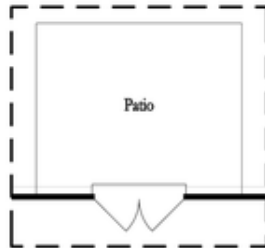
*Opt. Covered Patio
w/ Std Garden Door*



*Opt. Covered Patio
w/ French Door*



*Opt. Covered Patio
w/ Slider Door*



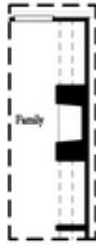
Opt. French Door



Opt. Slider Door

**Want to Know More
About This Home?**

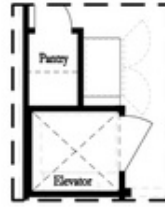
CONTACT OUR COMMUNITY SALES MANAGER
Call Us @ 770.521.2151



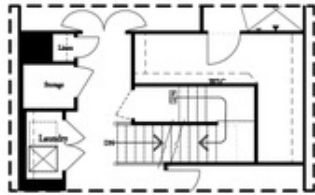
Opt. Fireplace



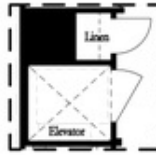
Opt. Linear Fireplace



*Opt. Elevator
 First Floor*



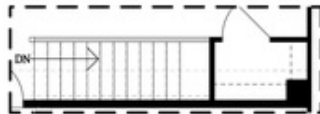
2nd Floor Stairs to 3rd Floor



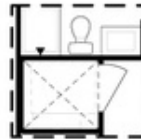
*Opt. Elevator
 Second Floor*



*Owner's Suite & Bath
 No Trey or Vaulted Ceilings w/ 3rd Floor



Opt. Open Rail on 3rd Floor



*Opt. Elevator
 Third Floor*

OPTIONS

Want to Know More
 About This Home?

CONTACT OUR COMMUNITY SALES MANAGER
 Call Us @ 770.521.2151