



PRICED FROM
\$923,900

 2,852 - 3,922 Sq Ft

 3 - 6 Beds

 2.5 - 6 Baths

 2 Car Garage

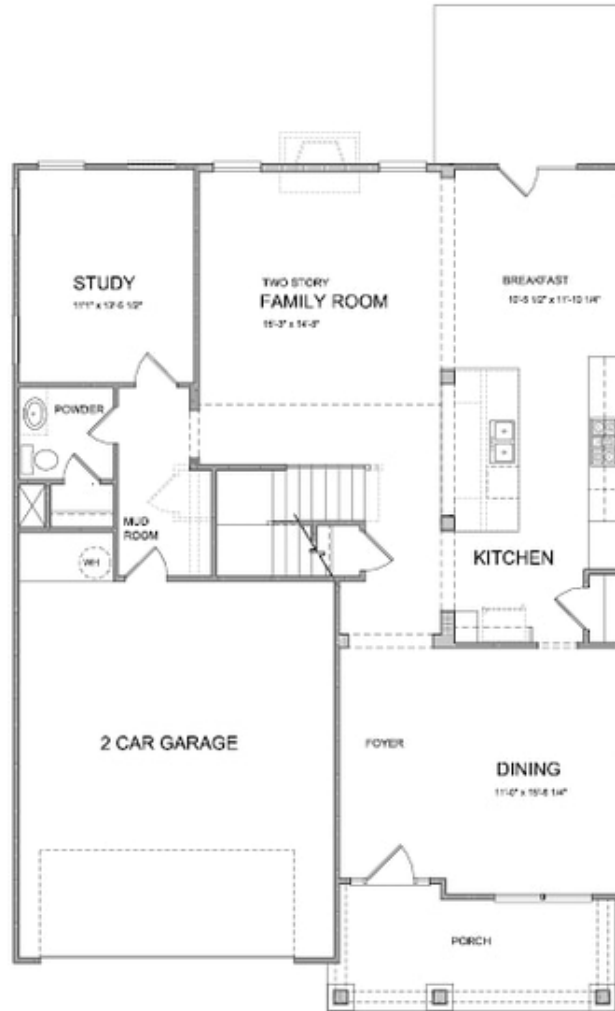
 3.0 Story

- Open Main Level Layout with Private Study and Formal Dining Room
- Optional Sunroom with Fireplace and Access to Deck/Patio
- Spacious Owner's Suite with Dual Walk-In Closets, Separate Tub, Shower and Dual Vanities
- Optional Third Level Retreat with Bedroom, Bonus Room and Large Storage Area
- Additional Bedroom Options To Provide Three to Six Bedrooms
- Optional Media Room On Upper Level

[Read More Online](#)

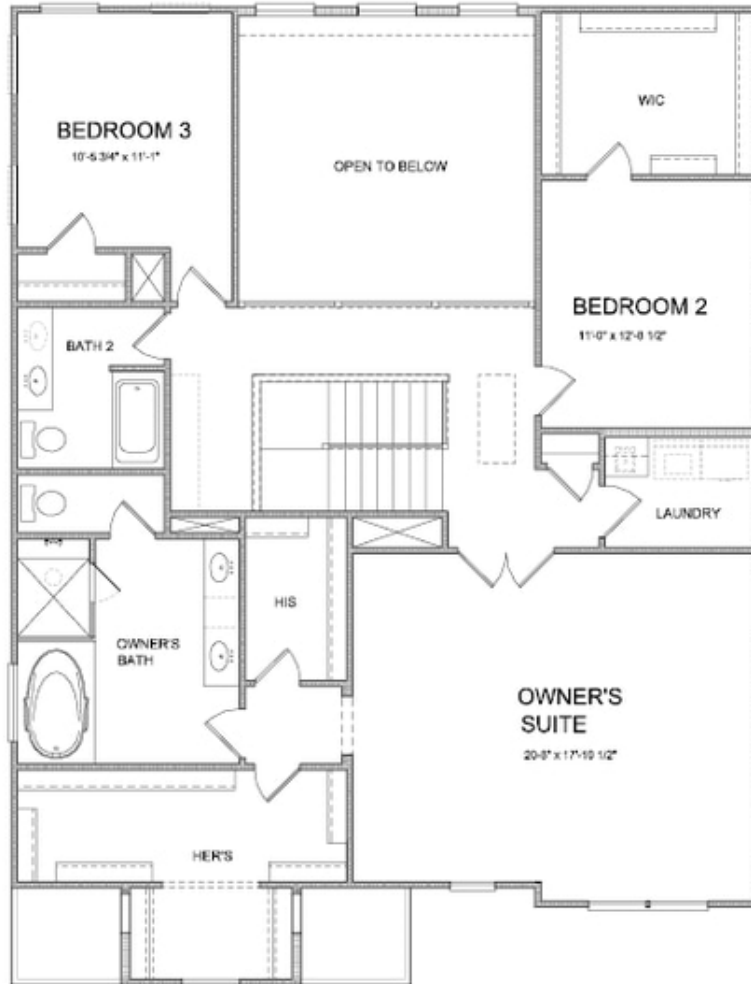
Available Elevations





**Want to Know More
About This Home?**

CONTACT OUR COMMUNITY SALES MANAGER
Call Us @ 770.521.2151



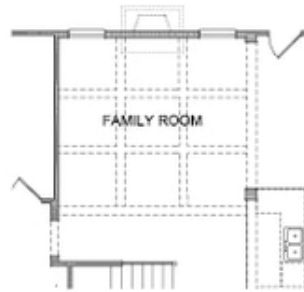
**Want to Know More
About This Home?**

CONTACT OUR COMMUNITY SALES MANAGER
Call Us @ 770.521.2151



**Want to Know More
About This Home?**

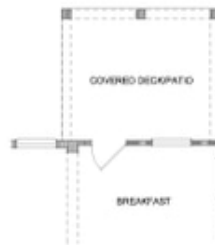
CONTACT OUR COMMUNITY SALES MANAGER
Call Us @ 770.521.2151



*Opt. Coffered Ceilings
w/ Opt. Media Room or Bedroom
5 above*



*Opt. Bedroom 4 w/ Full Bath
ilo Study & Power Room*



Opt. Covered Deck/Patio

FIRST FLOOR OPTIONS

**Want to Know More
About This Home?**

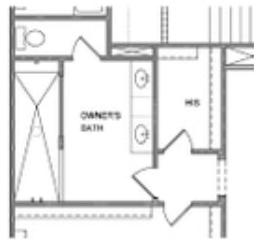
CONTACT OUR COMMUNITY SALES MANAGER
Call Us @ 770.521.2151



*Opt. Full Bath 3
 on Bedroom 2*



*Opt. In-Law Suite on
 Bedroom 3*



Opt. Walk-In Shower



*Opt. Media Room
 No Open Ceiling on Family Room*

SECOND FLOOR OPTIONS

**Want to Know More
 About This Home?**

CONTACT OUR COMMUNITY SALES MANAGER
 Call Us @ 770.521.2151