



PRICED AT
\$700,680

 2400 Sq Ft

 4 Beds

 3.5 Baths

 2 Car Garage

 3.0 Story

Elevate Your Savings! The sales price reflects our current \$25K Incentive - with an additional \$5K for contracts written and closed by March 31, 2026. The Benton III, a new 4-bedroom home in Ward's Crossing by The Providence Group, is located in the heart of Johns Creek! This newly designed townhome was created just for Ward's Crossing! Featuring four bedrooms and 3.5 bathrooms. This home is situated at the back of the community, directly across from the community pool. It features three levels of living, including a guest retreat on the terrace level with a walk-in shower. The Main living level features 10-foot ceilings and an open floor plan, including an open family and dining room. The chef-inspired kitchen features a walk-in pantry, a center island, custom cabinetry, and Energy Star-certified stainless steel appliances. The third floor has 3 bedrooms and two full bathrooms. The photos are not of the exact property, but they are similar, as the home is currently under construction and is expected to be completed in January 2026. The homes are Energy Star Certified; they are built to a higher standard and adhere to strict energy efficiency guidelines, delivering superior performance, quality, and lower utility bills. ...

**Want to Know More
About This Home?**

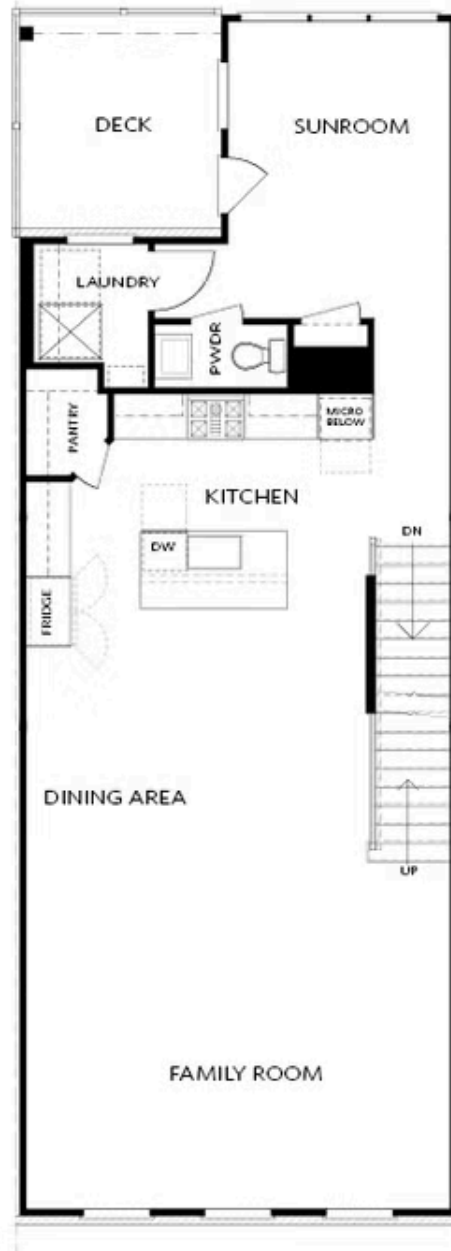
CONTACT OUR COMMUNITY SALES MANAGER
Call Us @ 770.521.2151



Elevation 03

Want to Know More
About This Home?

CONTACT OUR COMMUNITY SALES MANAGER
Call Us @ 770.521.2151



Elevation O3

Want to Know More
About This Home?

CONTACT OUR COMMUNITY SALES MANAGER
Call Us @ 770.521.2151



Want to Know More
About This Home?

CONTACT OUR COMMUNITY SALES MANAGER
Call Us @ 770.521.2151



OPT Right Side
 Fireplace

* Elevation O3 Only



OPT Right Side
 Linear Fireplace

* Elevation O3 Only



OPT Left Side
 Linear Fireplace



OPT Left Side
 Fireplace

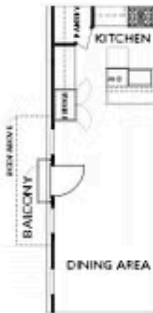


OPT Double Doors



OPT Shower

TERRACE



OPT Side Juliet Balcony

*End Unit Only | Elevation O3 Only



OPT Side Porch

*End Unit Only | Elevation O3 Only

SECOND FLOOR

Want to Know More
 About This Home?

CONTACT OUR COMMUNITY SALES MANAGER
 Call Us @ 770.521.2151



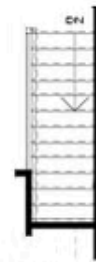
OPT Walk-Through Shower



OPT Freestanding Tub/Shower



OPT Decked Tub/Shower



OPT Open Rail

THIRD FLOOR

Want to Know More
About This Home?

CONTACT OUR COMMUNITY SALES MANAGER
Call Us @ 770.521.2151