



PRICED AT
\$726,000

 2400 Sq Ft

 4 Beds

 3.5 Baths

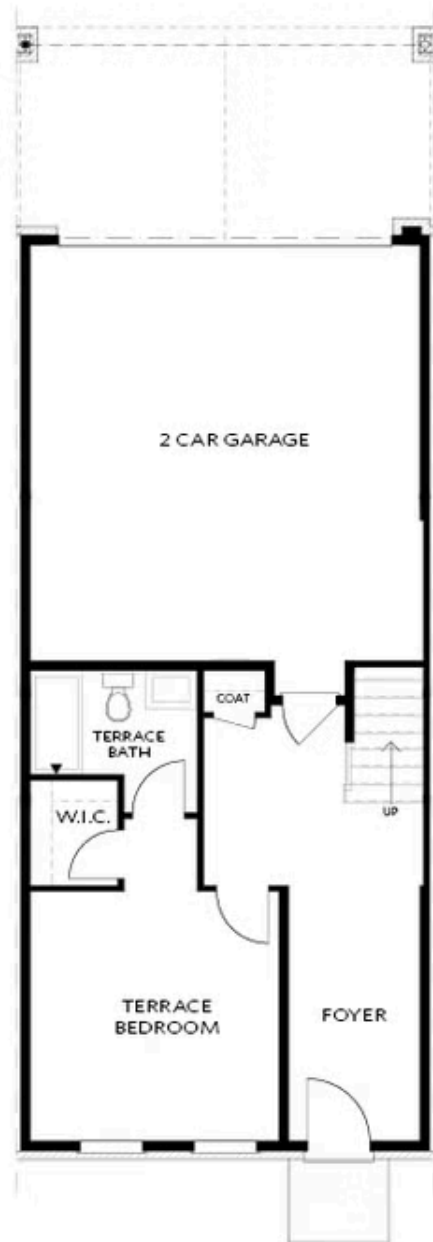
 2 Car Garage

 3.0 Story

Elevate Your Savings! Enjoy \$25K—on contracts written by the end of February 2026. The promotion can be applied toward a price reduction, upgraded appliances, closing costs, Rate-Buy down, and more, giving you the flexibility to save where it matters most. NEW 4-BEDROOM BENTON III! Ward's Crossing by The Providence Group, located in the heart of Johns Creek! Sales Price includes all structural options, including the upgraded walk-in shower on the terrace level and the 45" Linear Fireplace. This newly designed townhome was created just for Ward's Crossing! Featuring four bedrooms and 3.5 bathrooms. This home is situated at the back of the community, directly across from the community pool. It features three levels of living, including a guest retreat on the terrace level with a walk-in shower. The Main living level features 10-foot ceilings and an open floor plan, including a family and dining room. The chef-inspired kitchen features a walk-in pantry, a center island, custom cabinetry, and Energy Star-certified stainless steel appliances. The third floor has 3 bedrooms and two full bathrooms. The homes are Energy Star Certified; they are built to a higher standard and adhere to strict energy efficiency guidelines, delivering superior performance, quality, and lower utility ...

**Want to Know More
About This Home?**

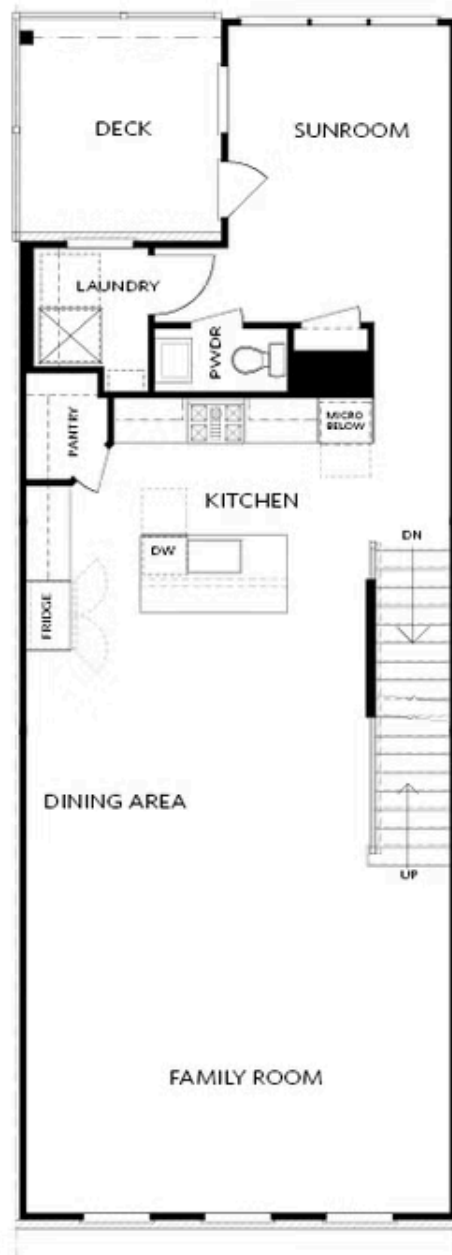
CONTACT OUR COMMUNITY SALES MANAGER
Call Us @ 770.521.2151



Elevation 03

Want to Know More
About This Home?

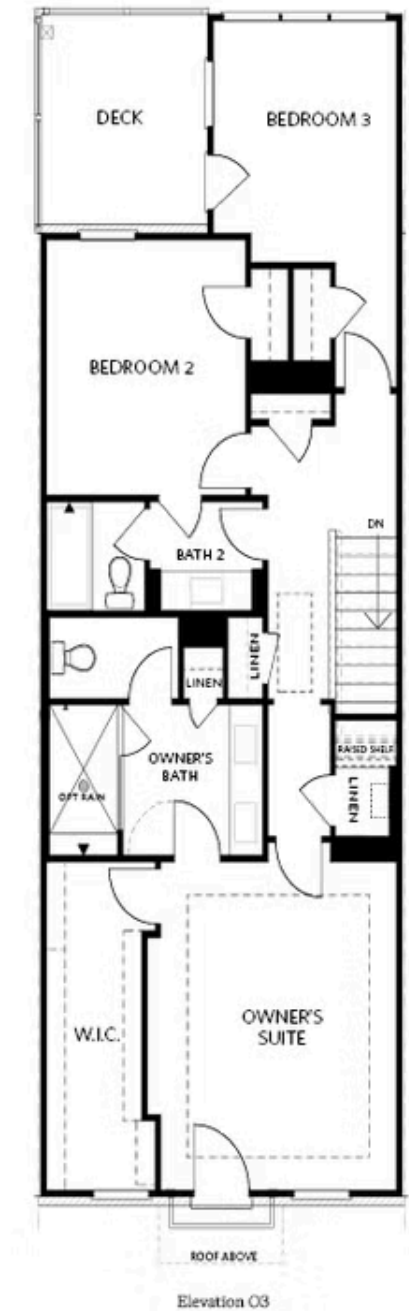
CONTACT OUR COMMUNITY SALES MANAGER
Call Us @ 770.521.2151



Elevation 03

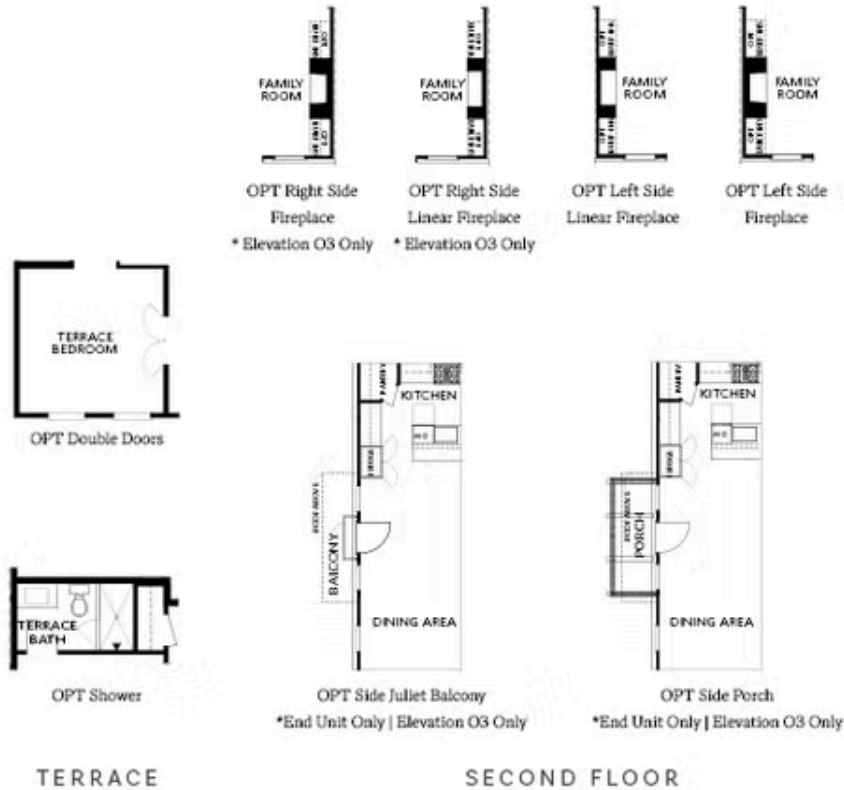
Want to Know More
About This Home?

CONTACT OUR COMMUNITY SALES MANAGER
Call Us @ 770.521.2151



Want to Know More
About This Home?

CONTACT OUR COMMUNITY SALES MANAGER
Call Us @ 770.521.2151



Want to Know More
About This Home?

CONTACT OUR COMMUNITY SALES MANAGER
Call Us @ 770.521.2151



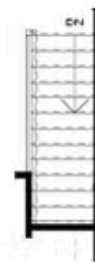
OPT Walk-Through Shower



OPT Freestanding Tub/Shower



OPT Decked Tub/Shower



OPT Open Rail

THIRD FLOOR

Want to Know More
About This Home?

CONTACT OUR COMMUNITY SALES MANAGER
Call Us @ 770.521.2151