



PRICED AT  
**\$735,550**

 2400 Sq Ft

 4 Beds

 3.5 Baths

 2 Car Garage

 3.0 Story

NEW 4-BEDROOM BENTON IV PRESALE OPPORTUNITY in Ward's Crossing by The Providence Group, located in the heart of Johns Creek! END UNIT - featuring 8 extra side windows. Sales Price includes all structural options, including the upgraded walk-in shower on the terrace level, 45" Linear Fireplace, and Walk-In Shower with Drying Area in the primary bedroom. FOR A LIMITED TIME, buyers can make ALL DESIGN SELECTIONS. This newly designed townhome was created just for Ward's Crossing! Features four bedrooms and 3.5 bathrooms. This home will face a community green space. Three levels of living, with a guest retreat on the terrace level featuring a walk-in shower. The main living level features 10-foot ceilings and an open floor plan, including a family and dining room. The chef-inspired kitchen features a walk-in pantry, center island, and custom cabinetry, along with Energy Star-certified stainless-steel appliances. The third floor has 3 bedrooms and two full bathrooms. This home is Energy Star certified and built with the finest finishing touches, including a Rheem gas tankless water heater, Thermacrete, and Energy Star-certified windows. Located right next to Johns Creek High School, State Bridge Crossing Elementary is just across the street! The location can't be beat! Give ...

**Want to Know More  
About This Home?**

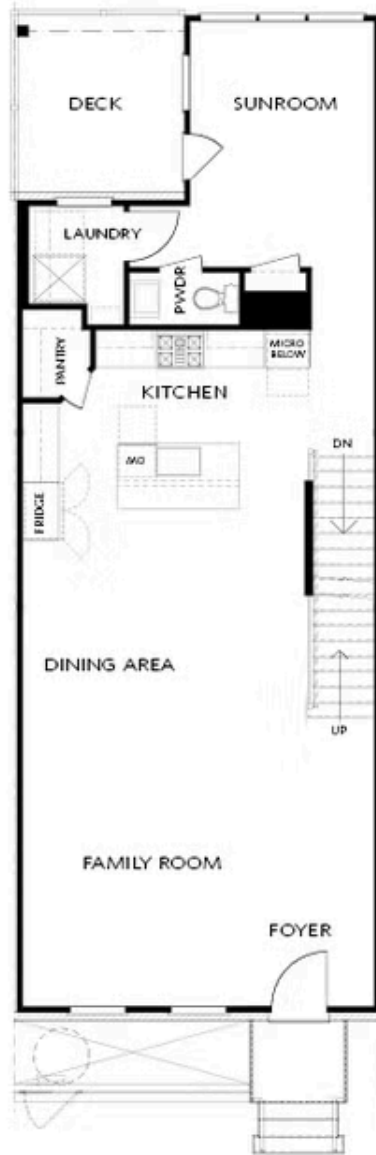
CONTACT OUR COMMUNITY SALES MANAGER  
Call Us @ 770.521.2151



Elevation S2

Want to Know More  
About This Home?

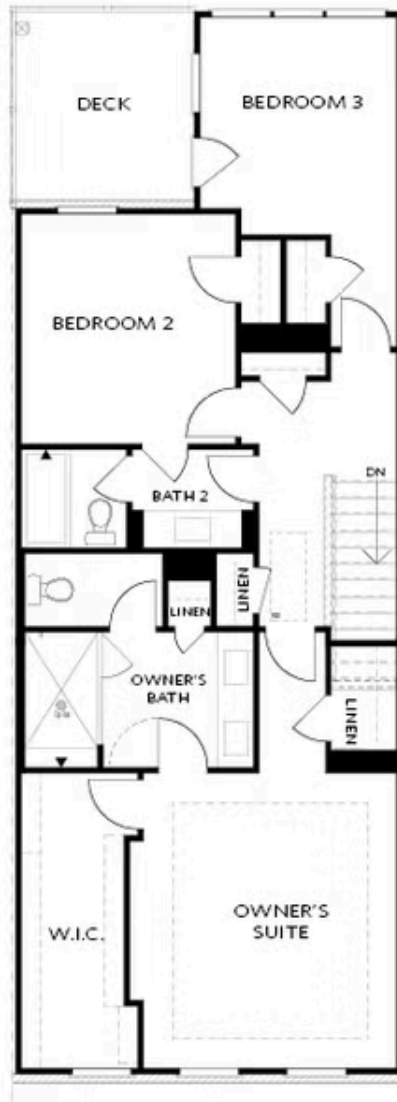
CONTACT OUR COMMUNITY SALES MANAGER  
Call Us @ 770.521.2151



Elevation S2

Want to Know More  
About This Home?

CONTACT OUR COMMUNITY SALES MANAGER  
Call Us @ 770.521.2151



Elevation S2

Want to Know More  
About This Home?

CONTACT OUR COMMUNITY SALES MANAGER  
Call Us @ 770.521.2151



OPT Shower

TERRACE



OPT Fireplac



OPT Linear Fireplace

SECOND FLOOR



OPT Walk-Through Shower



OPT Freestanding Tub with  
 Seperate Shower



OPT Decked Tub with  
 Seperate Shower



OPT Open Rail

THIRD FLOOR

Want to Know More  
 About This Home?

CONTACT OUR COMMUNITY SALES MANAGER  
 Call Us @ 770.521.2151