


PRICED AT
\$731,575

 2400 Sq Ft

 4 Beds

 3.5 Baths

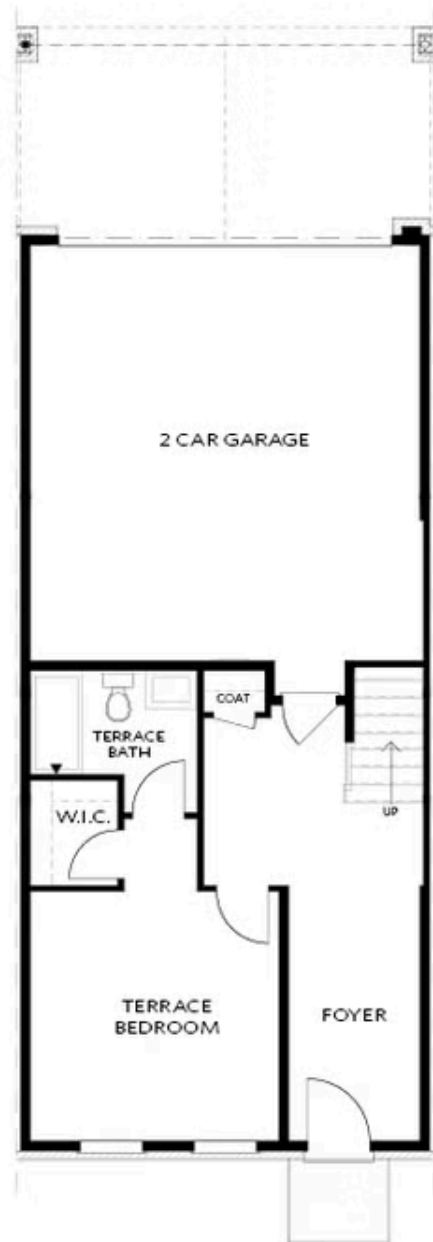
 2 Car Garage

 3.0 Story

Season of Savings! Build your Savings and Unwrap the Joy of a New Home with \$20K INCENTIVE FOR AN ACCEPTED CONTRACT IN December 2025! Promotion can be applied towards a price reduction, upgraded appliances, closing cost, Rate-Buy down and more- giving you the flexibility to save where it matters most. Welcome to the brand-new Benton III floorplan at Ward's Crossing in Johns Creek! This beautiful 4-bedroom design features 2400 square feet of living space on three levels. This is a presale opportunity so design selections can still be made by the purchaser! Sales price includes the base price of the home, lot premium and all structural options including terrace level walk in shower, Huge walk-in shower with drying area in the primary bathroom and a linear fireplace. As you enter the first level front door of the home you will have your first full bedroom which makes for perfect office or guest bedroom. Upstairs you will find a beautiful open design featuring 10 ft. ceilings and a gorgeous chef's kitchen with tons of cabinets, walk in pantry and GE Profile appliances. The spacious family room features a beautiful linear gas fireplace. A laundry room is located on this level in ...

**Want to Know More
About This Home?**

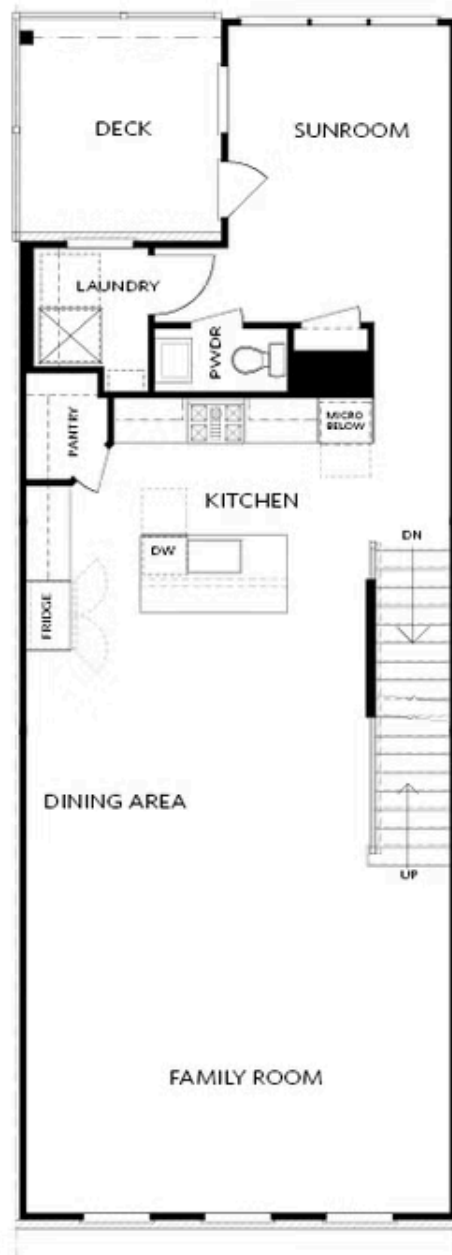
CONTACT OUR COMMUNITY SALES MANAGER
Call Us @ 770.521.2151



Elevation 03

Want to Know More
About This Home?

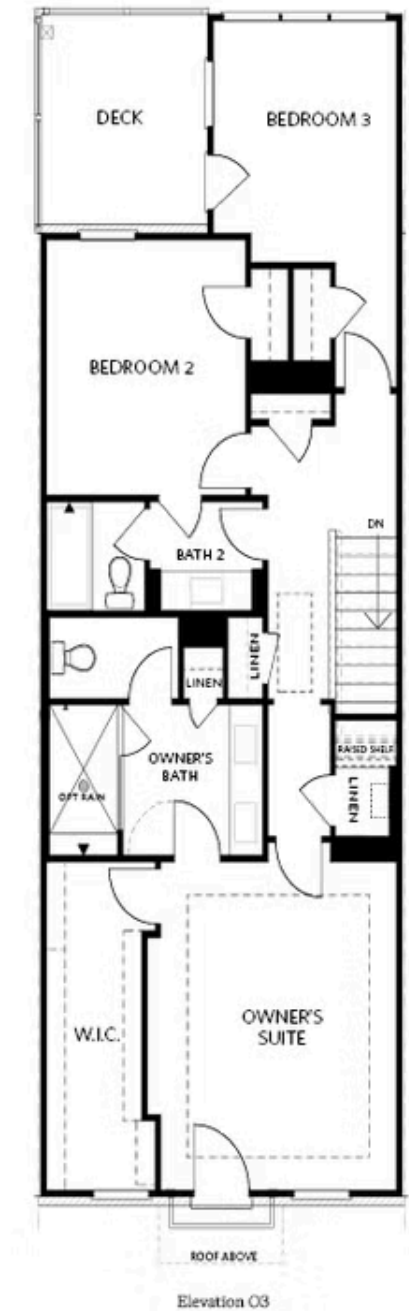
CONTACT OUR COMMUNITY SALES MANAGER
Call Us @ 770.521.2151



Elevation 03

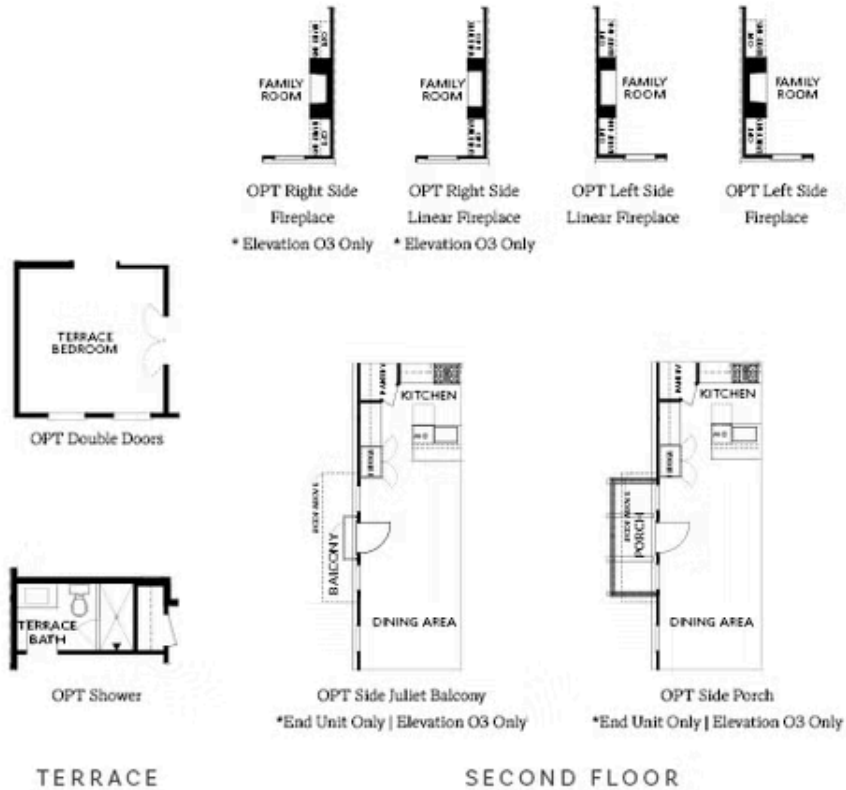
Want to Know More
About This Home?

CONTACT OUR COMMUNITY SALES MANAGER
Call Us @ 770.521.2151



Want to Know More
About This Home?

CONTACT OUR COMMUNITY SALES MANAGER
Call Us @ 770.521.2151



Want to Know More
About This Home?

CONTACT OUR COMMUNITY SALES MANAGER
Call Us @ 770.521.2151



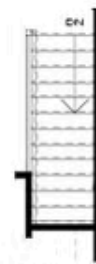
OPT Walk-Through Shower



OPT Freestanding Tub/Shower



OPT Decked Tub/Shower



OPT Open Rail

THIRD FLOOR

Want to Know More
About This Home?

CONTACT OUR COMMUNITY SALES MANAGER
Call Us @ 770.521.2151