



PRICED AT
\$741,575

 2400 Sq Ft

 4 Beds

 3.5 Baths

 2 Car Garage

 3.0 Story

Elevate Your Savings!!!! Enjoy a move in ready luxury package of \$25,000 which can be applied towards a price reduction, upgraded appliances, closing cost, Rate-Buy down and more- giving you the flexibility to save where it matters most. Welcome to the brand-new Benton III floorplan at Ward's Crossing in Johns Creek! This beautiful 4-bedroom design features 2400 square feet of living space on three levels. Sales price includes the base price of the home, several luxurious upgrades, lot premium and all structural options including terrace level walk in shower, Huge walk-in shower with drying area in the primary bathroom and a linear fireplace. As you enter the first level front door of the home you will have your first full bedroom which makes for perfect office or guest bedroom. Upstairs you will find a beautiful open design featuring 10 ft. ceilings and a gorgeous chef's kitchen with tons of cabinets, walk in pantry and GE Profile appliances. The spacious family room features a beautiful linear gas fireplace. A laundry room is located on this level in addition to a beautiful sunroom that walks out onto a beautiful deck. Tons of light fills this main level with an abundance of windows! ...

**Want to Know More
About This Home?**

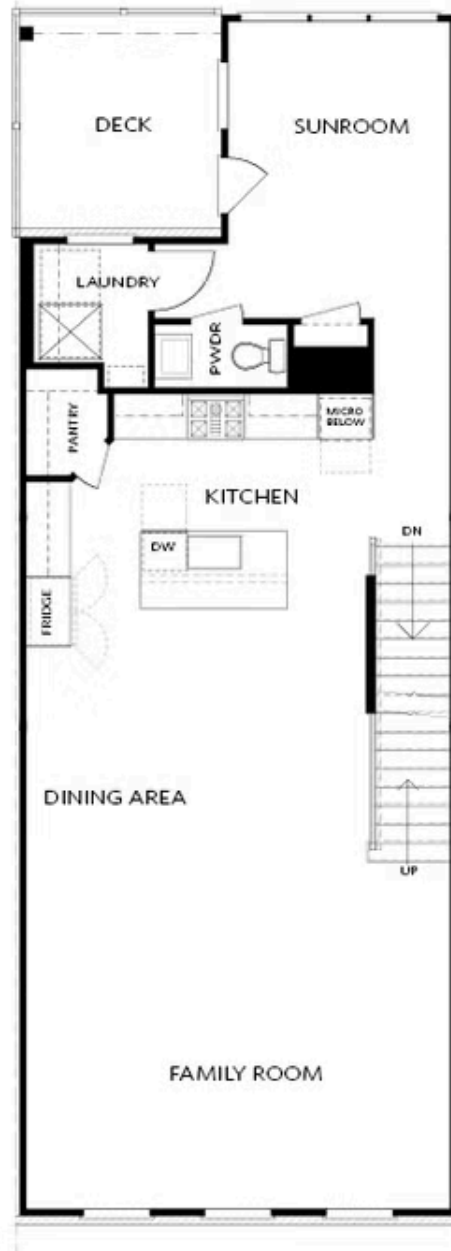
CONTACT OUR COMMUNITY SALES MANAGER
Call Us @ 770.521.2151



Elevation 03

Want to Know More
About This Home?

CONTACT OUR COMMUNITY SALES MANAGER
Call Us @ 770.521.2151



Elevation O3

Want to Know More
About This Home?

CONTACT OUR COMMUNITY SALES MANAGER
Call Us @ 770.521.2151



Want to Know More
About This Home?

CONTACT OUR COMMUNITY SALES MANAGER
Call Us @ 770.521.2151



OPT Right Side
 Fireplace

* Elevation O3 Only



OPT Right Side
 Linear Fireplace

* Elevation O3 Only



OPT Left Side
 Linear Fireplace



OPT Left Side
 Fireplace

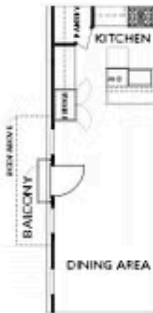


OPT Double Doors



OPT Shower

TERRACE



OPT Side Juliet Balcony

*End Unit Only | Elevation O3 Only



OPT Side Porch

*End Unit Only | Elevation O3 Only

SECOND FLOOR

Want to Know More
 About This Home?

CONTACT OUR COMMUNITY SALES MANAGER
 Call Us @ 770.521.2151



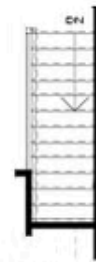
OPT Walk-Through Shower



OPT Freestanding Tub/Shower



OPT Decked Tub/Shower



OPT Open Rail

THIRD FLOOR

Want to Know More
About This Home?

CONTACT OUR COMMUNITY SALES MANAGER
Call Us @ 770.521.2151