



PRICED AT
\$758,110

 2516 Sq Ft

 3 Beds

 3.5 Baths

 2 Car Garage

 3.0 Story

FALL INTO SAVINGS!! MOVE-IN READY and NEW INCENTIVE -\$25K ANYWAY YOU WANT on contracts written by end of October and closing in November! Ward's Crossing's Newest Homeplan, the JACOBSEN I, offers 3 bedrooms and 3.5 bathrooms with a rear entry 2 car garage. Classic and timeless design details throughout. The kitchen has a clean and classic feel with white 42" Custom Wheat Cabinetry, Upgraded Calacatta Gold Quartz Countertops, a tile backsplash, and a GE stainless Steel appliance package. The family room has a cozy linear fireplace with 6x24 stacked quartzite and a box beam mantel. Just off the family room is a sunroom with access to the deck. Head to the upper floor for the primary suite, which offers a large walk-in closet and a stunning bathroom with dual vanity, marble countertops, and a separate tub & frameless tile shower. The 3rd bedroom on the terrace level has its own en-suite and a full bathroom with a frameless walk-in shower, making this the perfect spot for guests. Ward's Crossing by The Providence Group is located in the highly regarded Johns Creek community, known for its excellent schools, recreational amenities, shopping, dining, and vibrant cultural scene. The Sales Price Includes all ...

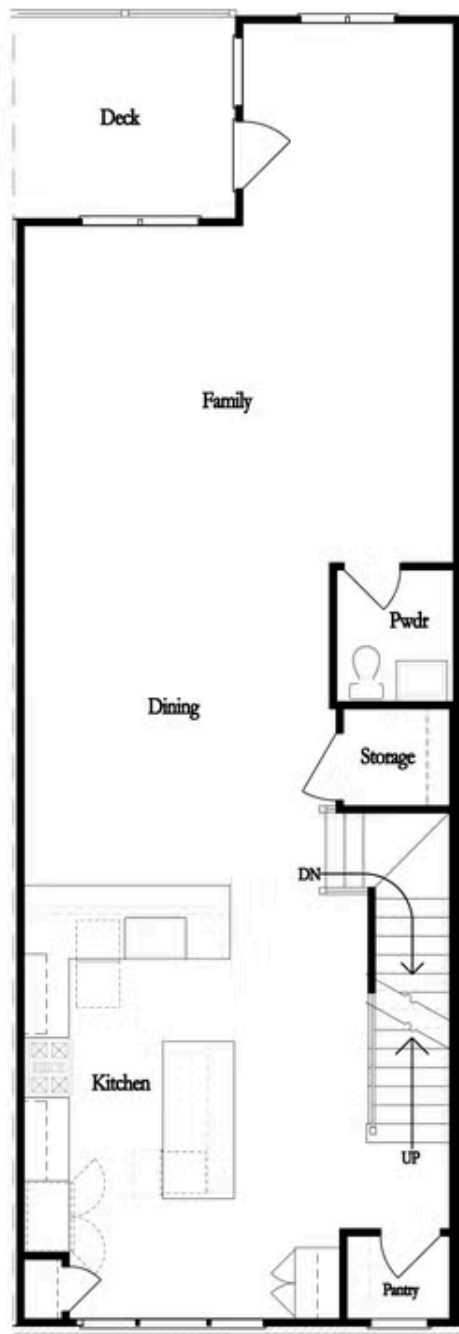
**Want to Know More
About This Home?**

CONTACT OUR COMMUNITY SALES MANAGER
Call Us @ 770.521.2151



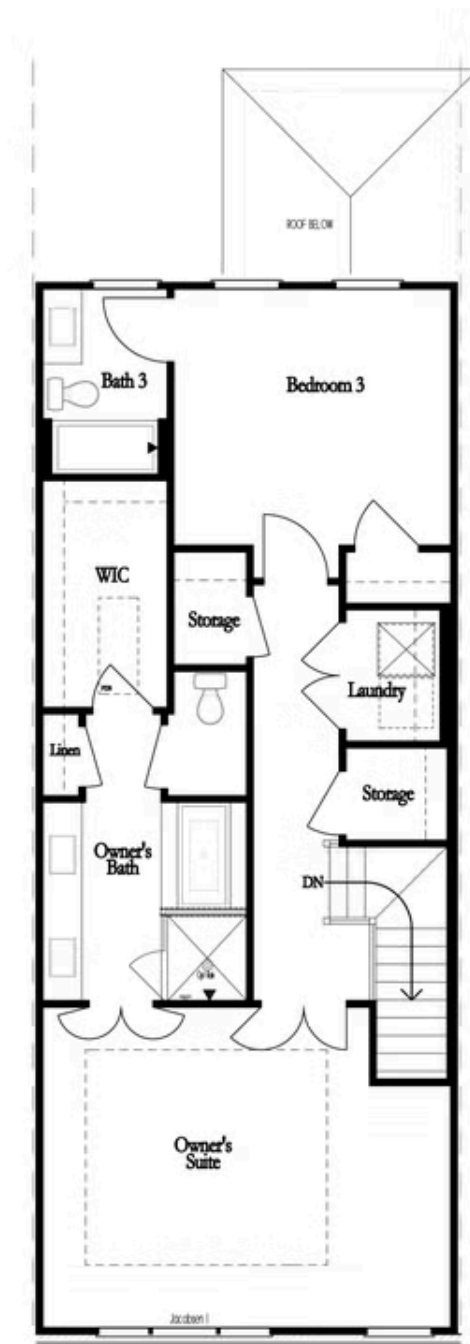
Want to Know More
About This Home?

CONTACT OUR COMMUNITY SALES MANAGER
Call Us @ 770.521.2151



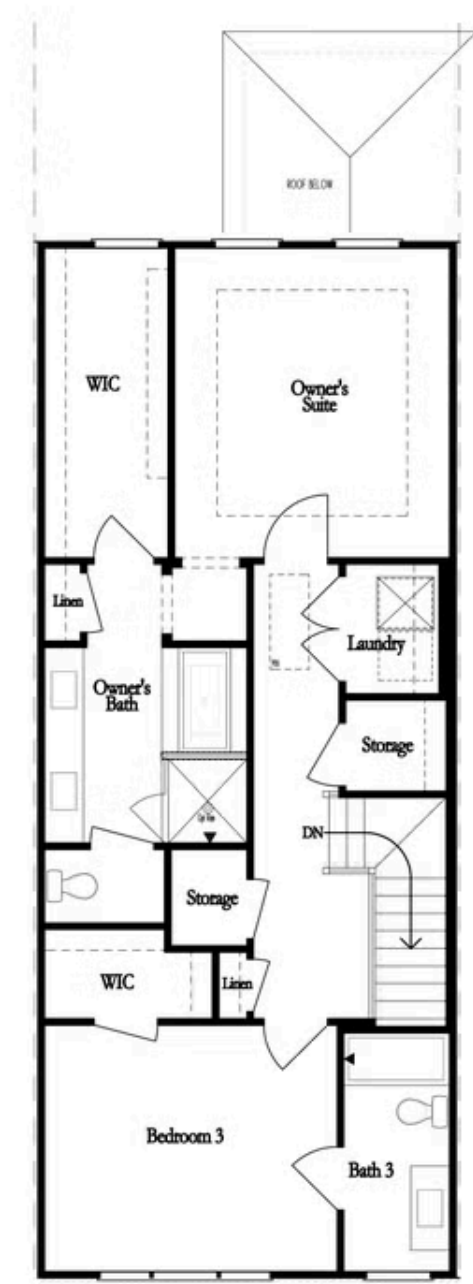
**Want to Know More
About This Home?**

CONTACT OUR COMMUNITY SALES MANAGER
Call Us @ 770.521.2151



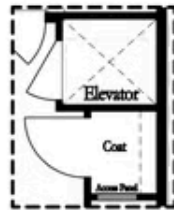
Want to Know More
About This Home?

CONTACT OUR COMMUNITY SALES MANAGER
Call Us @ 770.521.2151

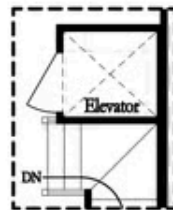


Want to Know More
About This Home?

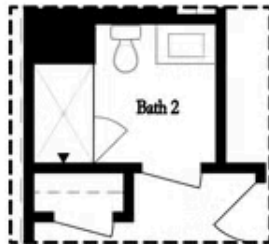
CONTACT OUR COMMUNITY SALES MANAGER
Call Us @ 770.521.2151



Opt. Elevator
on Terrace



Opt. Elevator
on Second Floor



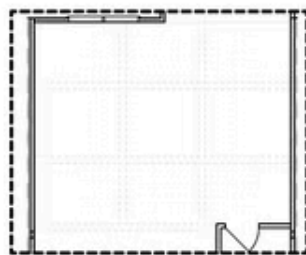
Opt. Shower
on Terrace Bath



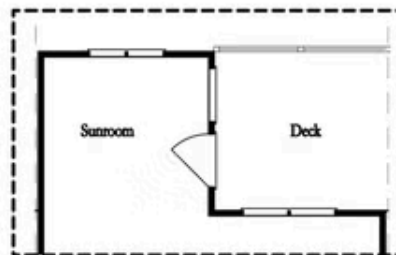
Opt. Linear
Fireplace



Opt. Fireplace



Opt. Coffered Ceiling

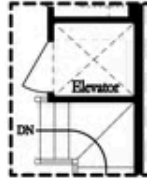


Opt. Sunroom 2

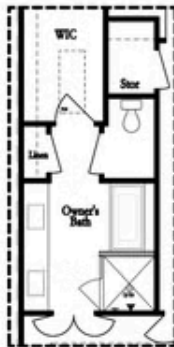
OPTIONS

Want to Know More
About This Home?

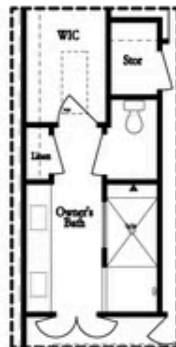
CONTACT OUR COMMUNITY SALES MANAGER
Call Us @ 770.521.2151



Opt. Elevator
on Third Floor

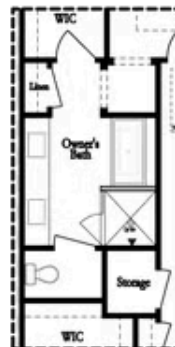


Opt. Free Standing
Tub w/ Shower

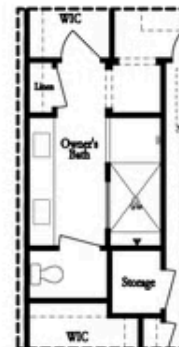


Opt. Walk-Through
Shower

OWNER'S SUITE FRONT



Opt. Free Standing
Tub w/ Shower



Opt. Walk-Through
Shower

OWNER'S SUITE REAR

Want to Know More
About This Home?

CONTACT OUR COMMUNITY SALES MANAGER
Call Us @ 770.521.2151