



PRICED AT

**\$758,110**

 2516 Sq Ft

 3 Beds

 3.5 Baths

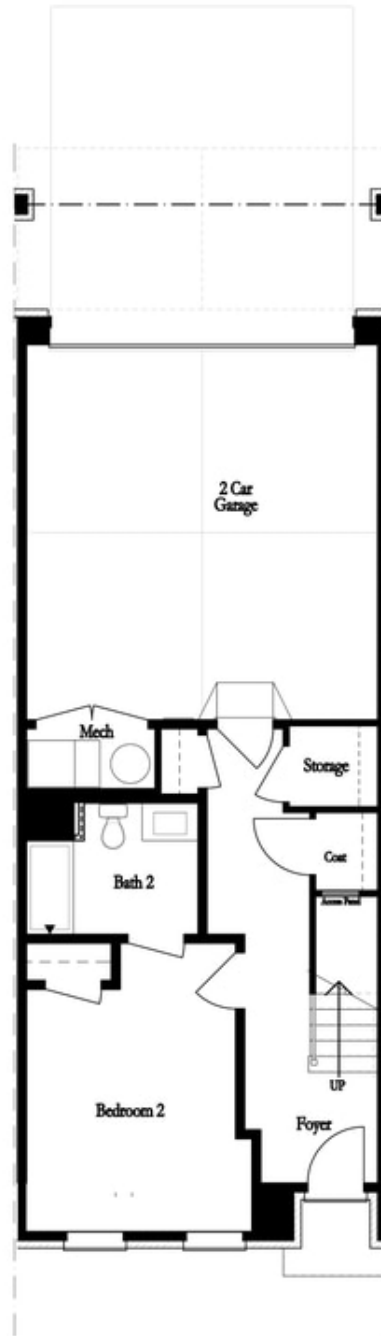
 2 Car Garage

 3.0 Story

Ward's Crossing's Newest Homeplan, the JACOBSEN I, offers 3 bedrooms and 3.5 bathrooms with a rear entry 2 car garage. Classic and timeless design details throughout. The kitchen has a clean and classic feel with white 42" Custom Wheat Cabinetry, Upgraded Calacatta Gold Quartz Countertops, a tile backsplash, and a GE stainless Steel appliance package. The family room has a cozy linear fireplace with 6x24 stacked quartzite and a box beam mantel. Just off the family room is a sunroom with access to the deck. Head to the upper floor for the primary suite, which offers a large walk-in closet and a stunning bathroom with dual vanity, marble countertops, and a separate tub & frameless tile shower. The 3rd bedroom on the terrace level has its own en-suite and a full bathroom with a frameless walk-in shower, making this the perfect spot for guests. Ward's Crossing by The Providence Group is located in the highly regarded Johns Creek community, known for its excellent schools, recreational amenities, shopping, dining, and vibrant cultural scene. The Sales Price Includes all Structural and Design options. Ward's Crossing is a Gated community with a pool and all exterior maintenance and insurance covered by your low ...

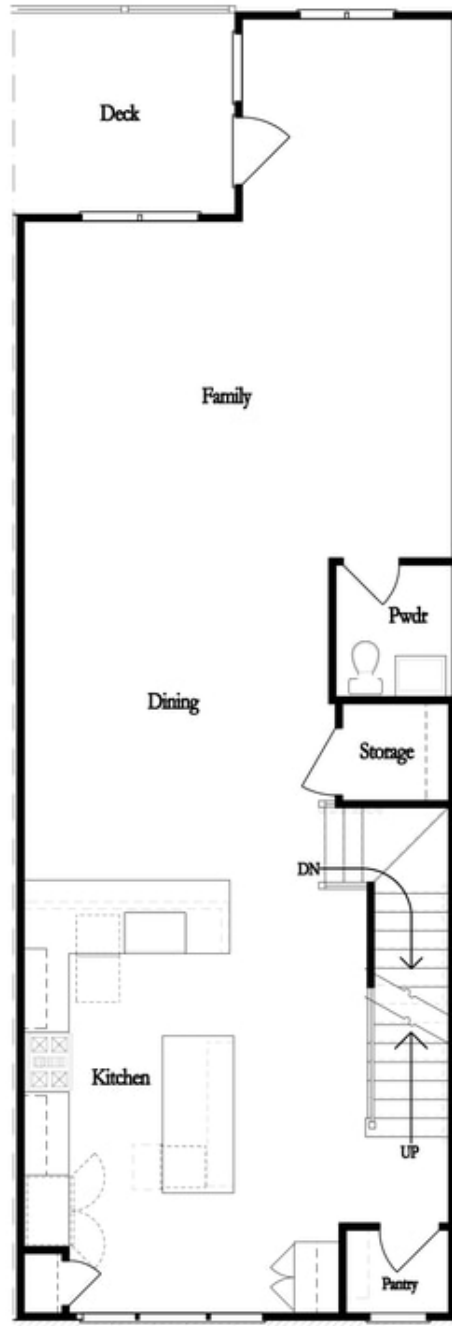
**Want to Know More  
About This Home?**

CONTACT OUR COMMUNITY SALES MANAGER  
Call Us @ 770.521.2151



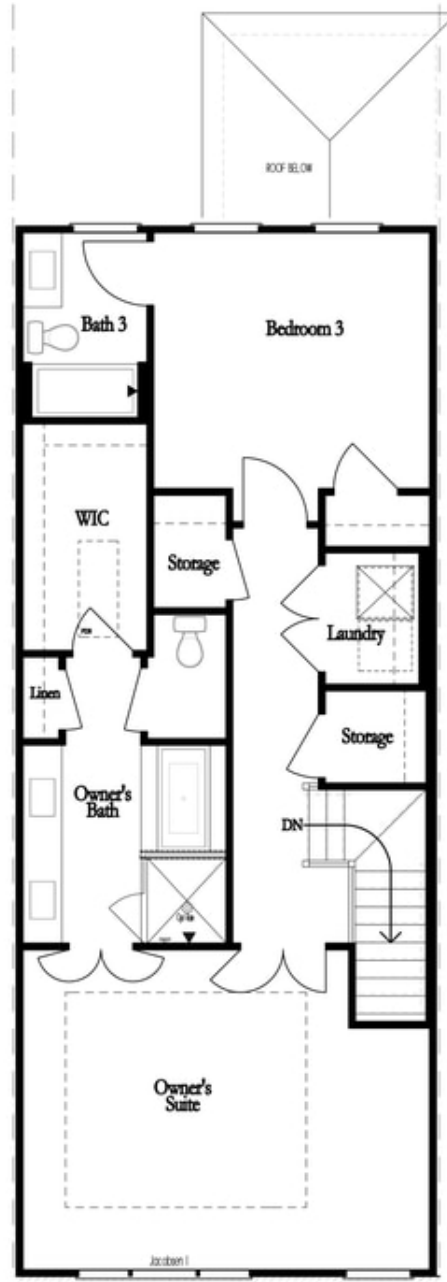
**Want to Know More  
About This Home?**

CONTACT OUR COMMUNITY SALES MANAGER  
Call Us @ 770.521.2151



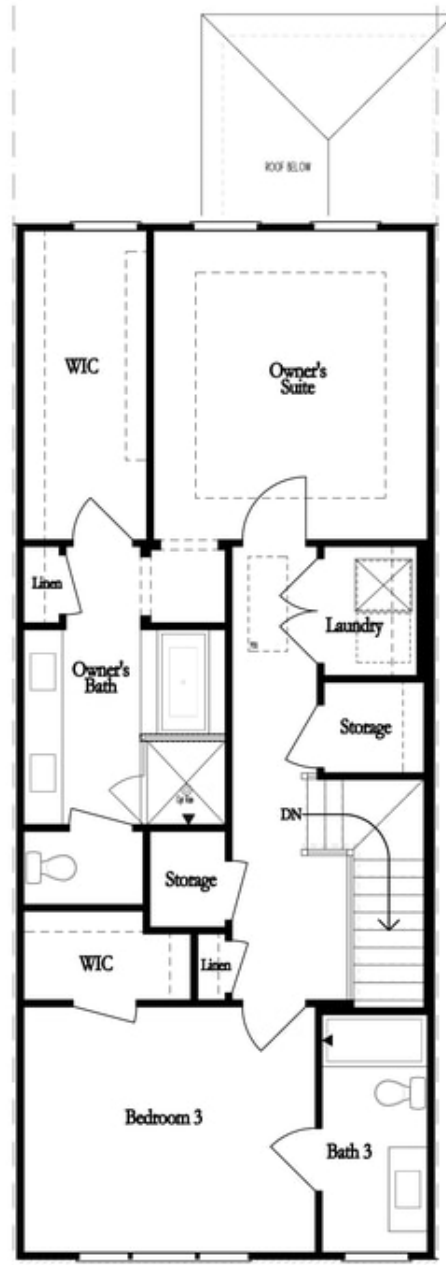
**Want to Know More  
About This Home?**

CONTACT OUR COMMUNITY SALES MANAGER  
Call Us @ 770.521.2151



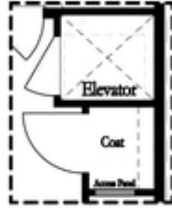
**Want to Know More  
About This Home?**

CONTACT OUR COMMUNITY SALES MANAGER  
Call Us @ 770.521.2151

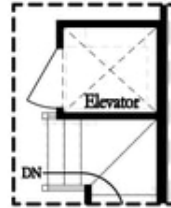


**Want to Know More  
About This Home?**

CONTACT OUR COMMUNITY SALES MANAGER  
Call Us @ 770.521.2151



*Opt. Elevator  
 on Terrace*



*Opt. Elevator  
 on Second Floor*



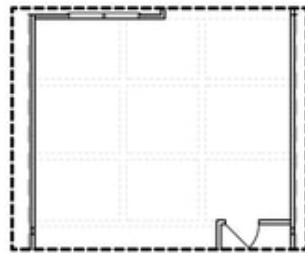
*Opt. Shower  
 on Terrace Bath*



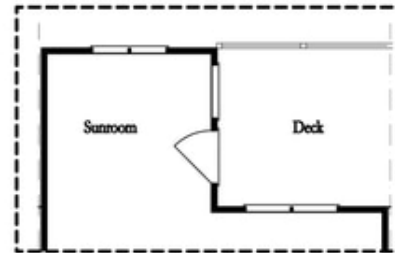
*Opt. Linear  
 Fireplace*



*Opt. Fireplace*



*Opt. Coffered Ceiling*

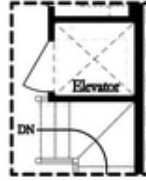


*Opt. Sunroom 2*

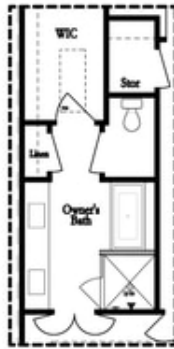
OPTIONS

**Want to Know More  
 About This Home?**

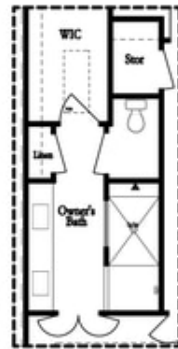
CONTACT OUR COMMUNITY SALES MANAGER  
 Call Us @ 770.521.2151



*Opt. Elevator  
 on Third Floor*

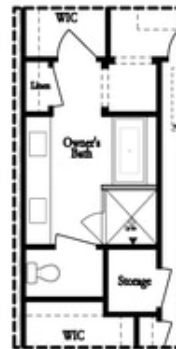


*Opt. Free Standing  
 Tub w/ Shower*



*Opt. Walk-Through  
 Shower*

OWNER'S SUITE FRONT



*Opt. Free Standing  
 Tub w/ Shower*



*Opt. Walk-Through  
 Shower*

OWNER'S SUITE REAR

**Want to Know More  
 About This Home?**

CONTACT OUR COMMUNITY SALES MANAGER  
 Call Us @ 770.521.2151