




PRICED AT
\$818,405

 2820 Sq Ft

 4 Beds

 3.5 Baths

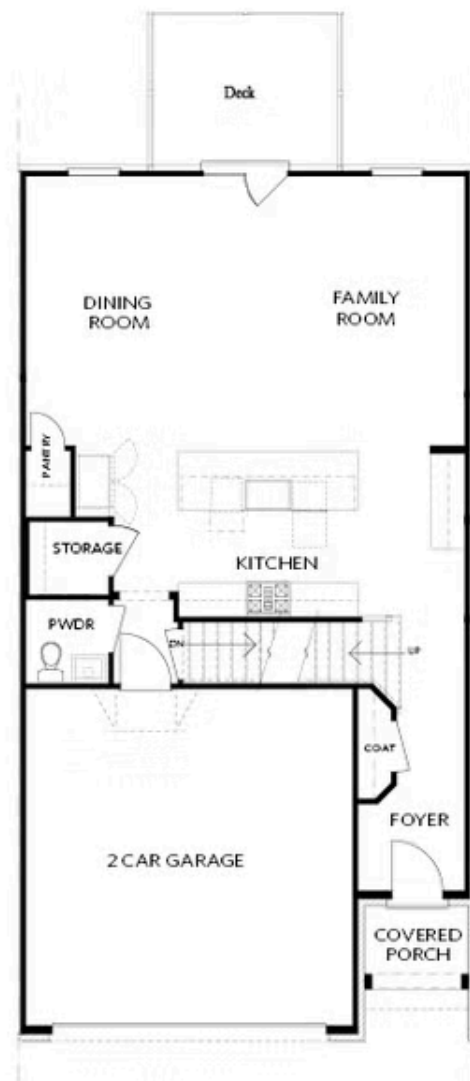
 2 Car Garage

 3.0 Story

Spring into a New Home! Welcome to The Ellington @ Wards Crossing. This home has four bedrooms, 3.5 baths, and over 2800 square feet of functional living space! With the living level located on the main, it truly lives like a single-family home. The beautifully designed entertainer's kitchen features are stacked to the ceiling, along with the Wheat Bell cabinetry, Kohler farm sink, and GE Profile appliances. The kitchen opens up to the family room, allowing for the perfect space to host loved ones or have a quiet night at home, lying next to your linear gas fireplace, which is detailed beautifully with a white quartzite surround. Triple slider door opens to a covered porch and a gorgeous fenced in backyard with wooded views! Gorgeous pine-colored hardwoods are throughout all main living areas and the primary bedroom. The primary bathroom has a soaking tub and walk-in shower with beautiful fawn gloss subway tile and Venetian flat pebble tiles. The third floor of the home includes the super spacious fourth bedroom and bathroom. This space could also efficiently function as a media room or playroom. This home is Energy Star certified and built with the finest finishing touches, including a Rheem ...

**Want to Know More
About This Home?**

CONTACT OUR COMMUNITY SALES MANAGER
Call Us @ 770.521.2151



FIRST FLOOR

Elevation C, I, K

Want to Know More
About This Home?

CONTACT OUR COMMUNITY SALES MANAGER
Call Us @ 770.521.2151

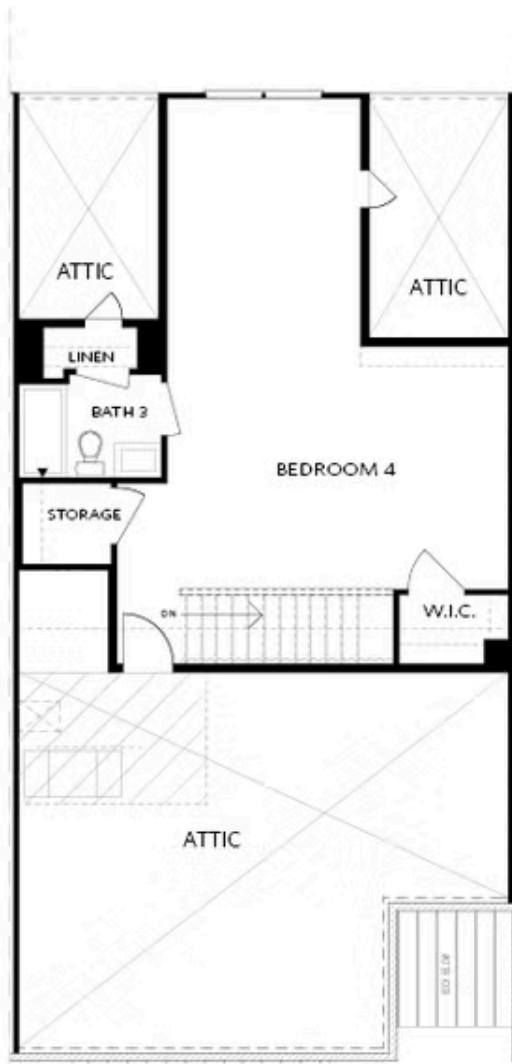


SECOND FLOOR

Elevation C, I, K

Want to Know More
About This Home?

CONTACT OUR COMMUNITY SALES MANAGER
Call Us @ 770.521.2151

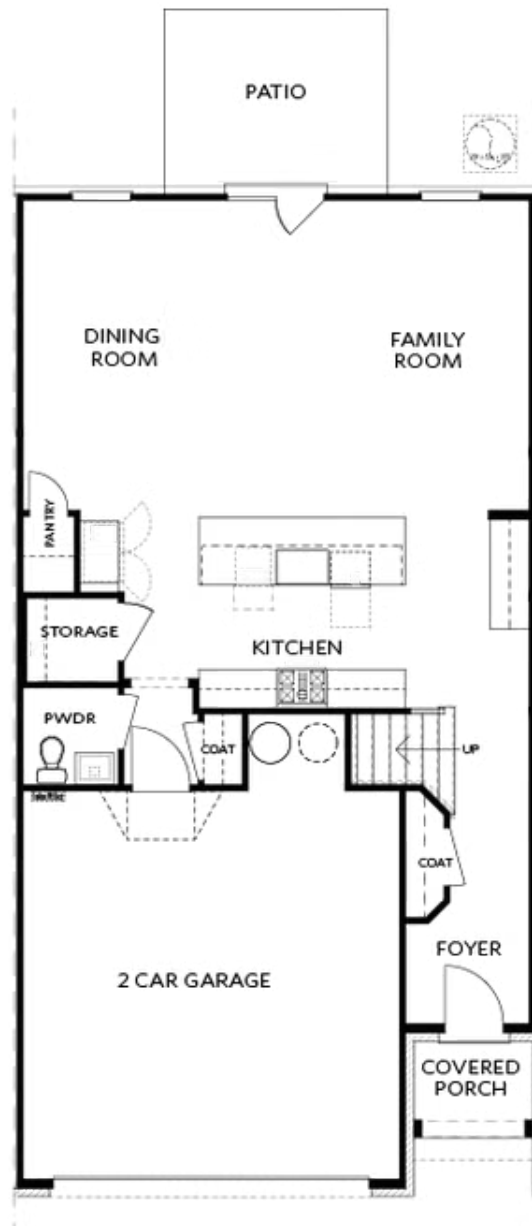


THIRD FLOOR

Elevation C, I, K

Want to Know More
About This Home?

CONTACT OUR COMMUNITY SALES MANAGER
Call Us @ 770.521.2151



Elevations C, I, K

Want to Know More
About This Home?

CONTACT OUR COMMUNITY SALES MANAGER
Call Us @ 770.521.2151

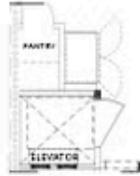


BASEMENT

Elevation C, I, K

Want to Know More
About This Home?

CONTACT OUR COMMUNITY SALES MANAGER
Call Us @ 770.521.2151



Opt. Elevator
First Floor



Opt. Fireplace



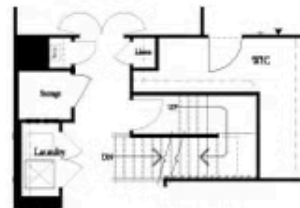
Opt. Linear Fireplace



Owner's Suite & Bath
*No Trey or Vaulted Ceilings w/ 3rd Floor



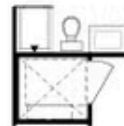
Opt. Elevator
Second Floor



2nd Floor Stairs to 3rd Floor



Opt. Open Rail on 3rd Floor



Opt. Elevator
Third Floor

OPTIONS ON A SLAB WITH 3RD FLOOR

Want to Know More
About This Home?

CONTACT OUR COMMUNITY SALES MANAGER
Call Us @ 770.521.2151