



PRICED AT
\$818,405

 **2820 Sq Ft**

 **4 Beds**

 **3.5 Baths**

 **2 Car Garage**

 **3.0 Story**

Spring into a New Home! Welcome to The Ellington @ Wards Crossing. This home has four bedrooms, 3.5 baths, and over 2800 square feet of functional living space! With the living level located on the main, it truly lives like a single-family home. The beautifully designed entertainer's kitchen features are stacked to the ceiling, along with the Wheat Bell cabinetry, Kohler farm sink, and GE Profile appliances. The kitchen opens up to the family room, allowing for the perfect space to host loved ones or have a quiet night at home, lying next to your linear gas fireplace, which is detailed beautifully with a white quartzite surround. Triple slider door opens to a covered porch and a gorgeous fenced in backyard with wooded views! Gorgeous pine-colored hardwoods are throughout all main living areas and the primary bedroom. The primary bathroom has a soaking tub and walk-in shower with beautiful fawn gloss subway tile and Venetian flat pebble tiles. The third floor of the home includes the super spacious fourth bedroom and bathroom. This space could also efficiently function as a media room or playroom. This home is Energy Star certified and built with the finest finishing touches, including a Rheem ...

**Want to Know More
About This Home?**

CONTACT OUR COMMUNITY SALES MANAGER
Call Us @ 770.521.2151

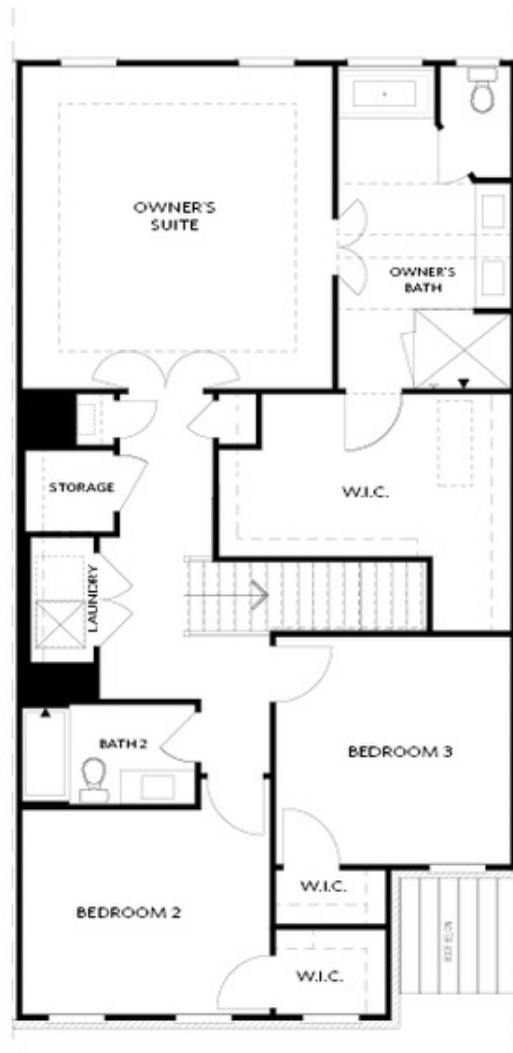


FIRST FLOOR

Elevation C, I, K

Want to Know More
About This Home?

CONTACT OUR COMMUNITY SALES MANAGER
Call Us @ 770.521.2151

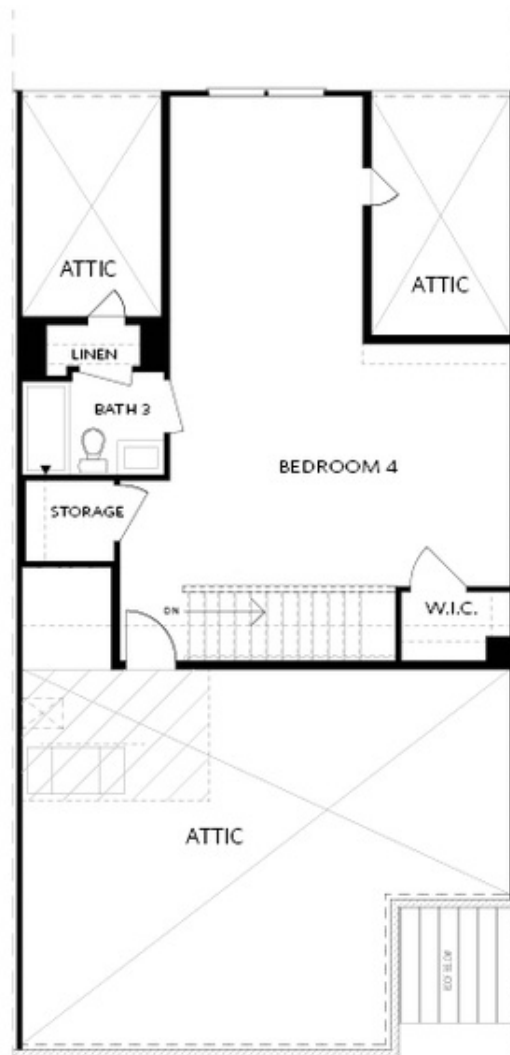


SECOND FLOOR

Elevation C, I, K

Want to Know More
About This Home?

CONTACT OUR COMMUNITY SALES MANAGER
Call Us @ 770.521.2151

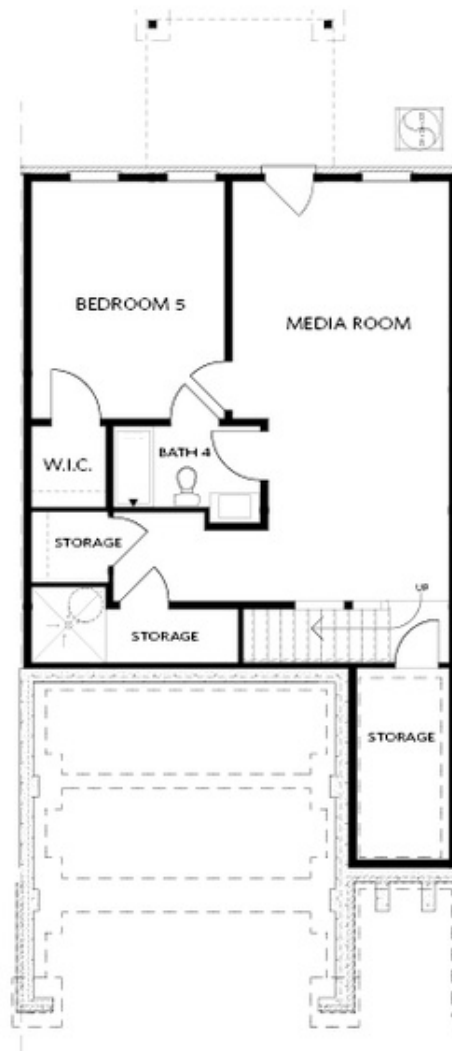


THIRD FLOOR

Elevation C, I, K

Want to Know More
About This Home?

CONTACT OUR COMMUNITY SALES MANAGER
Call Us @ 770.521.2151

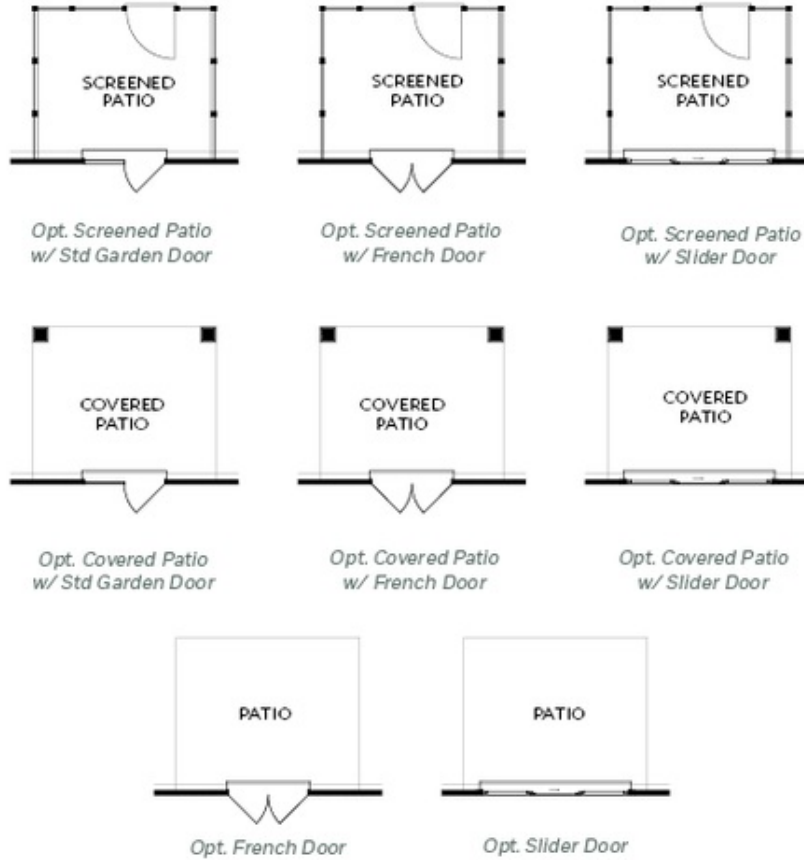


BASEMENT

Elevation C, I, K

**Want to Know More
About This Home?**

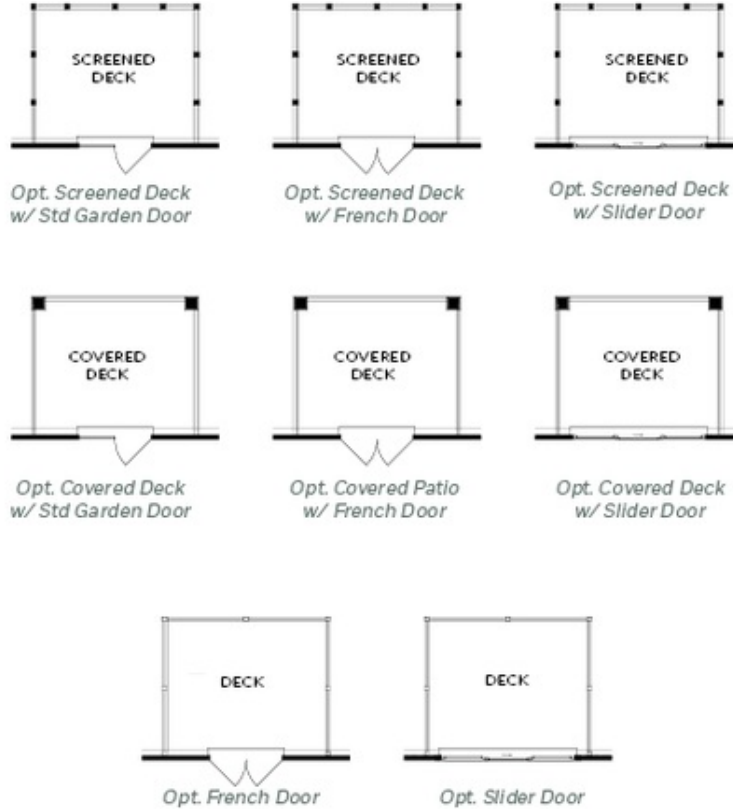
CONTACT OUR COMMUNITY SALES MANAGER
Call Us @ 770.521.2151



FIRST FLOOR
 PATIO OPTIONS
 ON A SLAB

Want to Know More
 About This Home?

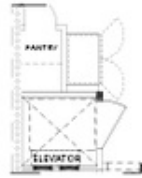
CONTACT OUR COMMUNITY SALES MANAGER
 Call Us @ 770.521.2151



FIRST FLOOR
 DECK OPTIONS
 ON A BASEMENT

Want to Know More
 About This Home?

CONTACT OUR COMMUNITY SALES MANAGER
 Call Us @ 770.521.2151



*Opt. Elevator
 First Floor*



Opt. Fireplace



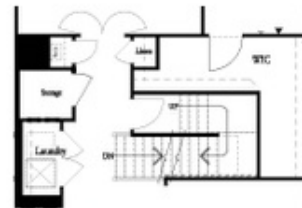
Opt. Linear Fireplace



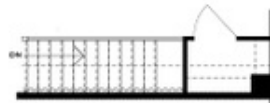
*Owner's Suite & Bath
 No Trey or Vaulted Ceilings w/ 3rd Floor



*Opt. Elevator
 Second Floor*



2nd Floor Stairs to 3rd Floor



Opt. Open Rail on 3rd Floor



*Opt. Elevator
 Third Floor*

OPTIONS
 ON A SLAB
 WITH 3RD FLOOR

**Want to Know More
 About This Home?**

CONTACT OUR COMMUNITY SALES MANAGER
Call Us @ 770.521.2151



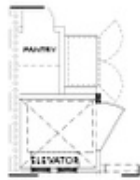
Opt. Shower



Opt. Wet Bar



*Opt. Elevator
 Basement*



*Opt. Elevator
 First Floor*



Opt. Fireplace



Opt. Linear Fireplace



*Opt. Elevator
 Second Floor*

**OPTIONS
 ON A BASEMENT**

**Want to Know More
 About This Home?**

CONTACT OUR COMMUNITY SALES MANAGER
Call Us @ 770.521.2151