



PRICED AT  
**\$855,450**

 2837 Sq Ft

 4 Beds

 3.5 Baths

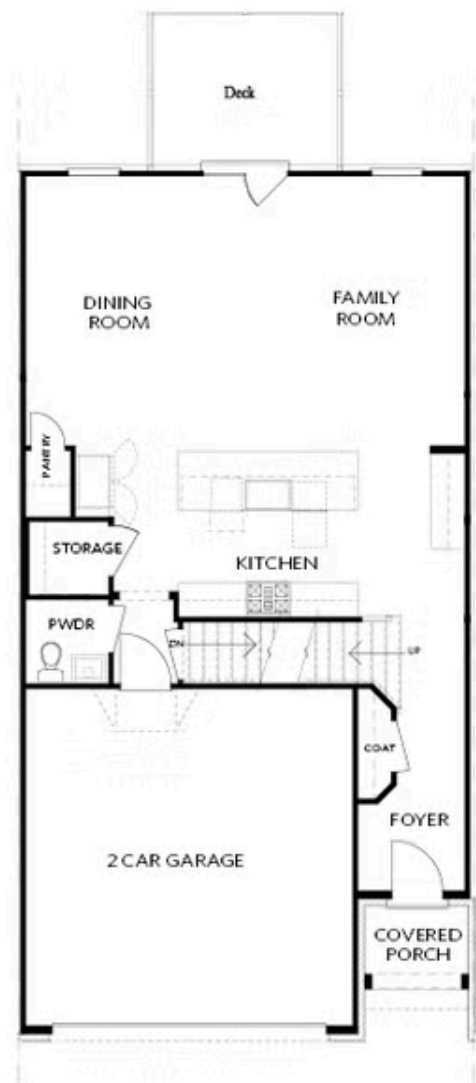
 2 Car Garage

 3.0 Story

Spring Into Your New Home! Welcome to The Ellington End Unit @ Wards Crossing. This home is 4 bedrooms, 3.5 baths and offers over 2800 square feet of functional home living space! With the living level located on the main, it truly lives like a single-family home. The beautifully designed entertainer's kitchen features cabinets stacked to the ceiling, White and Oatmeal Bell cabinetry, and GE Profile appliances. The kitchen opens up to the family room, allowing for the perfect space to host loved ones or have a quiet night at home, lying next to your linear gas fireplace, which is detailed beautifully with a white quartzite surround. Triple slider door opens to a covered porch and a gorgeous fenced in backyard with wooded views! Gorgeous sunkissed hardwoods throughout all main living areas and the primary bedroom. The primary bathroom has both a soaking tub and walk in shower with beautiful fawn gloss subway tile and venetian flat pebble tiles. The third floor of the home includes the super spacious fourth bedroom and bathroom. This space could also easily function as a media room or playroom. This home is Energy Star certified and built with the finest finishing touches, including a ...

**Want to Know More  
About This Home?**

CONTACT OUR COMMUNITY SALES MANAGER  
Call Us @ 770.521.2151



FIRST FLOOR

Elevation C, I, K

Want to Know More  
About This Home?

CONTACT OUR COMMUNITY SALES MANAGER  
Call Us @ 770.521.2151

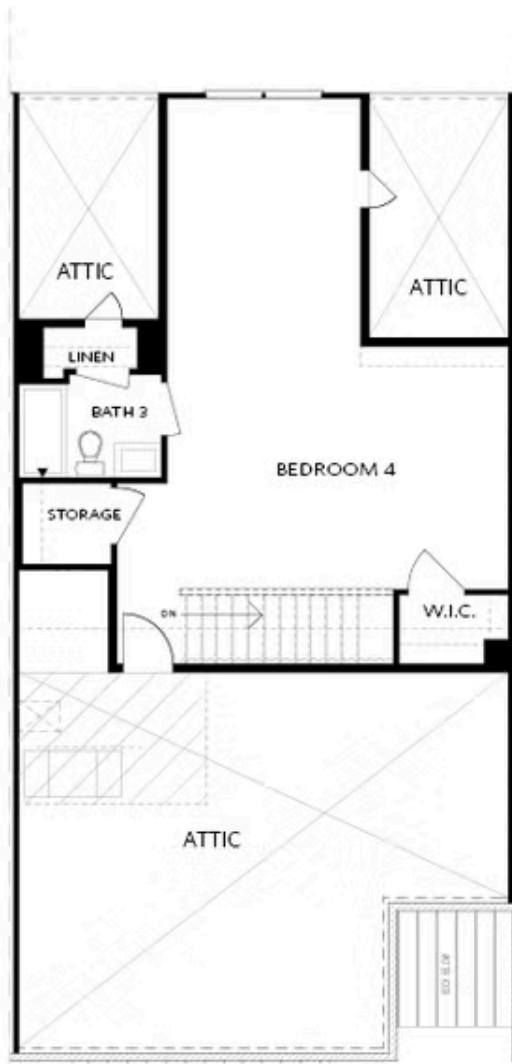


SECOND FLOOR

Elevation C, I, K

Want to Know More  
About This Home?

CONTACT OUR COMMUNITY SALES MANAGER  
Call Us @ 770.521.2151

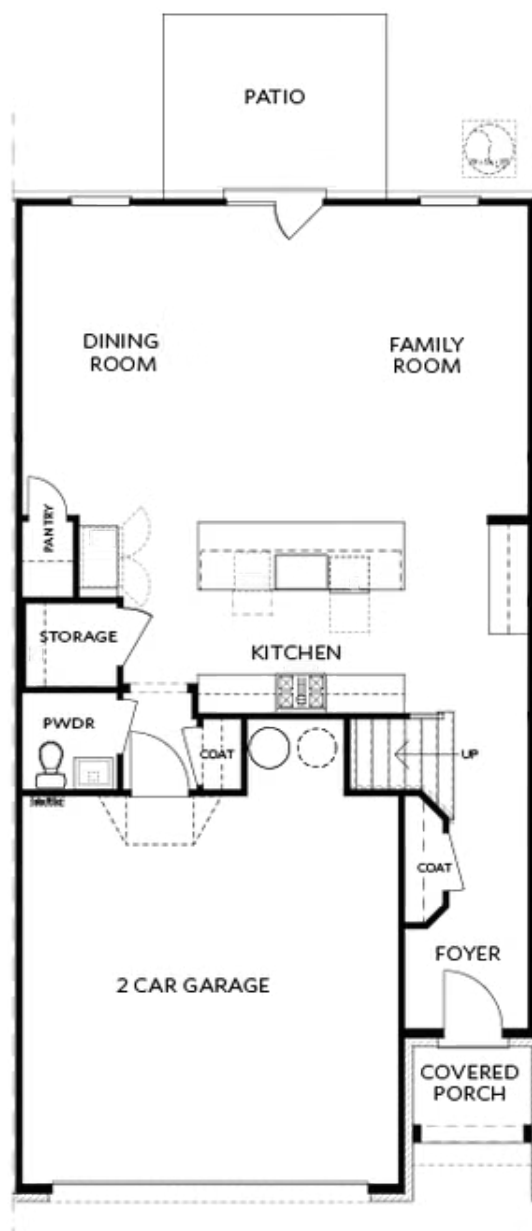


THIRD FLOOR

Elevation C, I, K

Want to Know More  
About This Home?

CONTACT OUR COMMUNITY SALES MANAGER  
Call Us @ 770.521.2151



Elevations C, I, K

Want to Know More  
About This Home?

CONTACT OUR COMMUNITY SALES MANAGER  
Call Us @ 770.521.2151

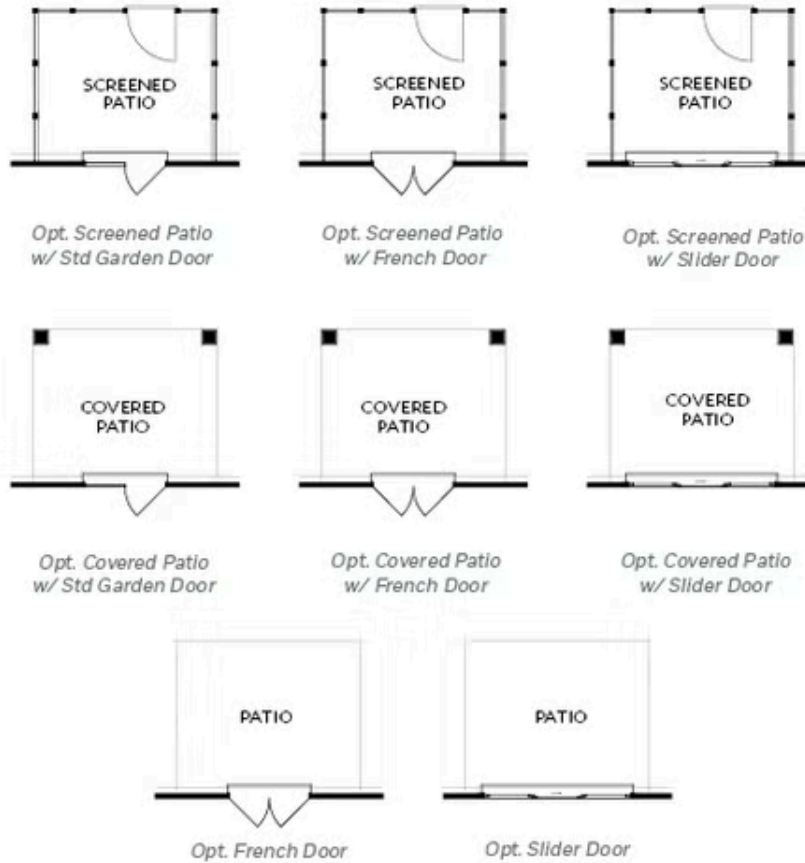


BASEMENT

Elevation C, I, K

Want to Know More  
About This Home?

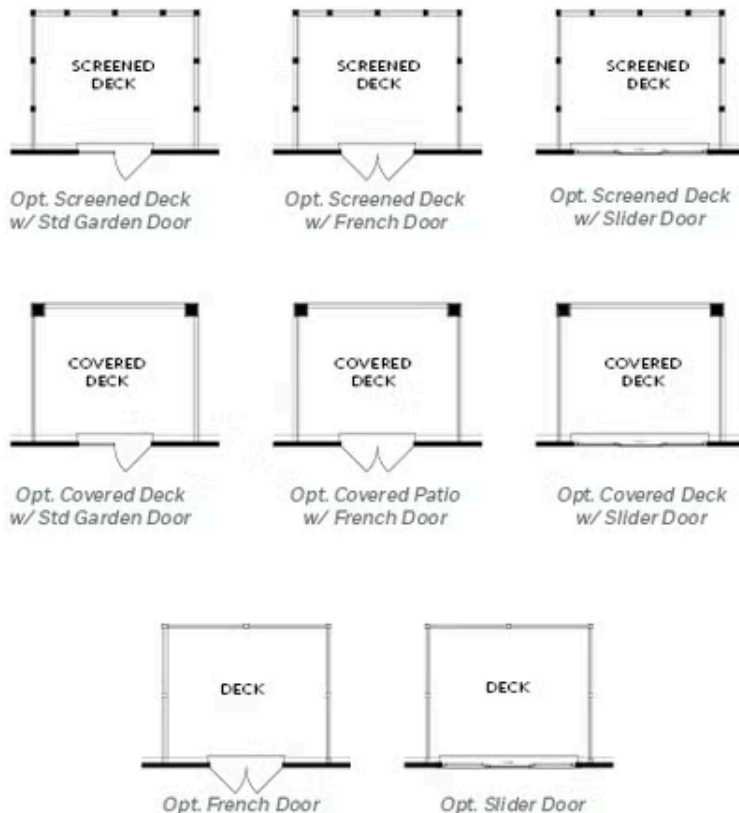
CONTACT OUR COMMUNITY SALES MANAGER  
Call Us @ 770.521.2151



FIRST FLOOR  
PATIO OPTIONS  
ON A SLAB

Want to Know More  
About This Home?

CONTACT OUR COMMUNITY SALES MANAGER  
Call Us @ 770.521.2151

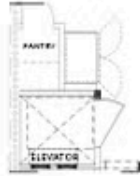


FIRST FLOOR  
DECK OPTIONS  
ON A BASEMENT

Want to Know More  
About This Home?

CONTACT OUR COMMUNITY SALES MANAGER  
Call Us @ 770.521.2151





Opt. Elevator  
First Floor



Opt. Fireplace



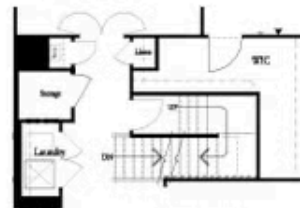
Opt. Linear Fireplace



Owner's Suite & Bath  
\*No Trey or Vaulted Ceilings w/ 3rd Floor



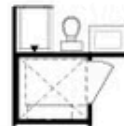
Opt. Elevator  
Second Floor



2nd Floor Stairs to 3rd Floor



Opt. Open Rail on 3rd Floor



Opt. Elevator  
Third Floor

### OPTIONS ON A SLAB WITH 3RD FLOOR

Want to Know More  
About This Home?

CONTACT OUR COMMUNITY SALES MANAGER  
Call Us @ 770.521.2151



*Opt. Shower*



*Opt. Wet Bar*



*Opt. Elevator  
Basement*



*Opt. Elevator  
First Floor*



*Opt. Fireplace*



*Opt. Linear Fireplace*



*Opt. Elevator  
Second Floor*

#### OPTIONS ON A BASEMENT

Want to Know More  
About This Home?

CONTACT OUR COMMUNITY SALES MANAGER  
Call Us @ 770.521.2151